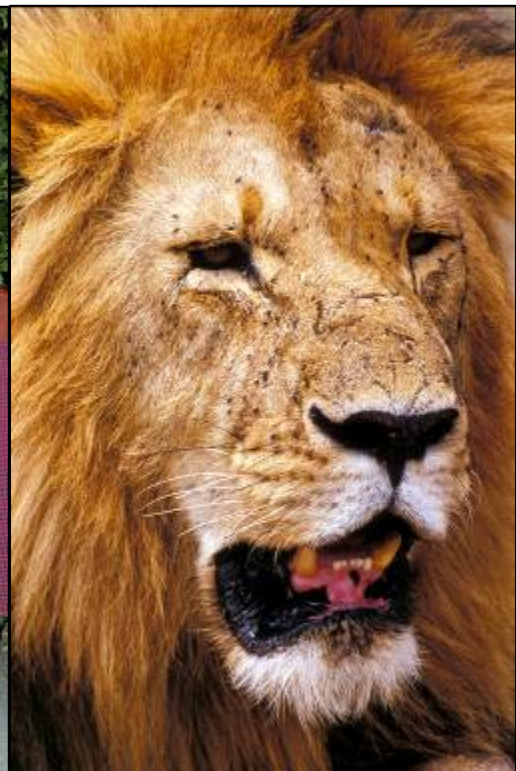


CALIFORNIA STATE UNIVERSITY, FRESNO
&
SAFARI ESCORT RALPH WATERHOUSE

**CORDIALLY INVITE YOU
ON A CLASSIC SAFARI TO WITNESS**

THE BEST OF KENYA

MAY 23 TO JUNE 4, 2012



YOUR NATURALIST GUIDE – EDWIN ONGORI



Edwin has been leading safaris to his native Kenya since 1988. A graduate of Kenya Utali College, Edwin earned his degree in tour guiding and administration. Edwin seems to instinctively know the best places to see Kenya's abundant wildlife. He enriches the safari experience of our travelers by sharing his perspectives on African conservation, the environment and horticulture. Always ready with a smile, Edwin's personable style makes our safaris all the more enjoyable. When not leading a Classic Escapes group, Edwin enjoys spending time with his wife and four children at their home in Nairobi.

YOUR ITINERARY

DAY 1 ~ WEDNESDAY ~ MAY 23

FRESNO/EN ROUTE

Your journey begins as you board your overnight flight to London. (Meals Aloft)

DAY 2 ~ THURSDAY ~ MAY 24

LONDON/EN ROUTE

Arrive in London's Heathrow Airport this morning, where you will make your way by shuttle to an Airport Hotel where a private dayroom is reserved for you. Your brief stopover is a welcome opportunity for rest and leisure. There is a time differential between continents, and the mind and body have to adjust. This evening, return to the terminal for your overnight flight to East Africa via Kenya Airways. (Meals Aloft)



DAY 3 ~ FRIDAY ~ MAY 25

NAIROBI

Early this morning arrive in Nairobi, the safari capital of East Africa, where you will be welcomed by your Classic Escapes expert driver/guides and naturalist and escorted to your luxurious hotel. Enjoy breakfast and a briefing about the wonderful events ahead while waiting to check into your room.

An interesting day is in store for you. Drive to Daphne Sheldrick's Elephant Orphanage at the edge of Nairobi National Park, which is a nursery and rehab center for infant elephants that have lost their families, as well as rhino and occasionally zebras and other wildlife.

Daphne was the first person to successfully master the art and raise orphan infant elephants. The wife of the famous naturalist David Sheldrick, Daphne has dedicated her life to conservation. David was founder Warden of Kenya's giant Tsavo East National Park, in which he served from 1948 until his death in 1976. Daphne has continued her involvement and has had real impact on the lives of elephants and rhinos, which would have normally died due to human poaching and surrounding population conflict. You'll enjoy a visit with the elephants as they're brought by their keepers to the waterhole and salt lick to be fed and socialize – see how they roll in the mud and play fight, and their affectionate interaction with their keepers. Daphne, or a member of her staff, will be on hand to discuss their habits, as well as impart interesting facts about their upkeep. These infants are eventually released into the wild at Tsavo East National Park and end up in the care of other orphans who have been successfully reintroduced to the wild.



This afternoon, visit the Karen Blixen House, the former house of the Danish Baroness, Karen Blixen (1885-1962) author of the book *Out of Africa*. Karen lived in this green residential area from 1914 to 1931 when she left permanently for Denmark. The house was built in 1910 and when Ms. Blixen bought the property, it had 6,000 acres of land but only 600 acres were developed for growing coffee; the rest was retained under natural forest. The house was bought by the Danish Government which offered it back to Kenya in 1963. In 1986, the house, formerly used as a school, was transformed to a National Museum. Much of the original furniture is on display in the house and most objects were either used by Karen herself or for the film and donated to the museum.



Continue to the AFEW Nature Center near Giraffe Manor where you may hand-feed the Rothschild giraffe that live here. The giraffe were brought here by Jock and Betty Leslie-Melville, who founded AFEW (African Fund for Endangered Wildlife) and built the Nature Center to help educate young African children about wildlife conservation. The Rothschild giraffe are the tallest species and may reach 18 feet in height, but you can see eye to eye with them on the elevated walkway at the center.

Located about 20 minutes from downtown Nairobi, the Safari Park Hotel is a 62-acre complex of convention center, resort and hotel. The architecture is large, dramatic and very impressive. The hotel features 204 spacious rooms, each with individual balconies overlooking the gardens, hand-carved four poster beds, refrigerated mini-bar, and many other

amenities. The grounds showcase landscaped gardens, rich with exotic African trees, plants, birds and a 2,400-square yard tropical swimming pool, one of the largest in Africa. In addition, the hotel has a second swimming pool, a world-class fitness center, five restaurants, and a shopping arcade.

Overnight at the NAIROBI SAFARI PARK HOTEL. (B Aloft, L)

DAYS 4/5 ~ SATURDAY/SUNDAY ~ MAY 26/27

SAMBURU RESERVE

Begin your exploration of this magnificent country as you drive on its rugged roads, through rich farm land, en route to Samburu Reserve, which lies 200 miles north of Nairobi on the hot and arid fringes of the vast northern region of Kenya. Lunch will be at Trout Tree restaurant, at Nanyuki en route. The reserve is within the lands of the colorful Samburu people, close relatives of the Maasai, and home to a number of wildlife species rarely found elsewhere in Kenya: Grevy's zebra, reticulated giraffe, and Beisa oryx, all found only north of the equator. The graceful gerenuk, an antelope with its characteristic long neck, spends much of its time in a bipedal stance seeking relaxation in the sparse scrub that grows in this harsh terrain. This dramatic landscape is blanketed by the hot equatorial sun for most of the year. Relief comes from the cool waters of the Uaso Nyiro ("Brown") River, which rises to the west on the foothills of the Aberdares and which vanishes beyond Samburu in the soggy expanse known as the Lorian swamp. The scenery in Samburu is magnificent and the birdlife awesome.



Ashnil Samburu Camp is located in the Buffalo Springs Reserve, separated from Samburu Reserve by the Uaso Nyiro River. This is the perfect lodge from which to view large numbers of elephants using the river to drink, bathe and play. Huge troops of baboons patrol the riverbanks daily and in the camp itself vervet monkeys socialize in the trees. Each of the 24 exclusive, comfortable, deluxe tents gives perfect views of the river, surrounding beautiful landscapes and all life

this brown river supports. Every spacious tent consists of a king size or twin beds, dressing area, sitting area, luggage rack, and en suite facilities.

Overnights at the ASHNIL SAMBURU CAMP. (B,L,D Daily)

DAY 6 ~ MONDAY ~ MAY 28

MOUNT KENYA

Your adventure continues as you drive through rich farm land, en route to your tree hotel. Standing at 2,195 meters (7,200 feet) on the slopes of snow-capped Mount Kenya, it is ringed by a dense rain forest that comes alive at dusk with the myriad sounds of creatures of all sizes. This is the adventure offered at Mountain Lodge, regarded by many as having the most consistently high record of animal "visits" and sightings in the area. All rooms are en-suite with spacious verandahs, and the main areas of the lodge overlook an illuminated waterhole. Your room is rustic, but very clean and comfortable, and overlooks a water hole frequented by a myriad of wildlife. Game viewing throughout the evening and night includes elephant, buffalo, rhino, giant forest hog, waterbuck, and maybe leopard and lion. A specially-constructed bunker affords close-up views of the game at the waterhole and is connected to the lodge by a short tunnel.



One of the highlights of your visit will be a guided nature walk by the lodge naturalist through the forest, which enables you to experience nature close up, and offers a brief on historical aspects of Mount Kenya and the area – so important during the Mau Mau movement for independence from British rule. The majestic rocky peaks of Mount Kenya constantly tower over the scene and you're likely to see some rare forest birds, as well as waterbuck, bushbuck, and oftentimes elephant and buffalo. Colobus monkeys may leap overhead, and Sykes monkeys can often steal your food if you're enjoying it while on the verandah.

Overnight at the SERENA MOUNTAIN LODGE. (B,L,D)



DAYS 7/8 ~ TUESDAY/WEDNESDAY ~ MAY 29/30

LAKE NAKURU NATIONAL PARK

You now explore the Great Rift Valley, a huge geological fault-line that stretches round one-sixth of the Earth's circumference and is visible from far out in space. At 2,000 feet deep and 30 miles wide, it runs as far as the eye can see. Its walls are sheer and high and along its length, there are many volcanoes, most now dormant. With bubbling springs and geysers, the landscape is spectacular. Lake Nakuru National Park is a shallow alkaline lake that is world-renowned for its huge concentration of flamingos; at times, hundreds of thousands of these birds give the lake a pink shimmering glow. The park boasts a huge variety of animals, including leopard which is often found snoozing on the

branches of the magnificent yellow-barked acacias, lion, buffalo, hippo, waterbuck, warthog, baboon, the endangered Rothschild's giraffe only found in this park in Kenya, white rhino and the rare black rhino which is protected and guarded here. For the bird-watching enthusiast there are 450 species found in the park vicinity, with a vast concentration of water birds including Marabou Stork, pelican, and of course the world-famous flocks of flamingo. Your wildlife drives

will allow ample wildlife viewing and you'll also get a chance for a bird and wildlife walk at nearby Soysambu and Lake Elmenteita.

Built in a natural dais, overlooking one of the world's greatest ornithological spectacles, the Sarova Lion Hill Lodge impresses every guest with its panoramic view of the pink shoreline created by the numerous flamingos on Lake Nakuru. The Lodge is situated within the heart of Kenya's Rift Valley, nestled on the banks of one of East Africa's most famous soda lakes, and surrounded by natural flora and fauna in its beautiful grounds. You can enjoy the vista from the privacy of your own verandah. Each of the 64 rustic chalets has a private secluded verandah and en suite bathroom. Additional amenities include the Flamingo Restaurant, the Rift Valley Bar, swimming pool, sauna and novelty shops. Local dancers perform traditional dances nightly.

Overnight at the SAROVA LION HILL. (B,L,D Daily)

DAYS 9/10/11 ~ THURSDAY/FRIDAY/SATURDAY ~ MAY 31/JUNE 1/2

MAASAI MARA / NORTHERN SERENGETI

Get ready to discover the sweeping landscapes, incredible wildlife and amazing people of Kenya as you board your comfortable minibus for your drive to the Maasai Mara, Kenya's most famous wildlife reserve, much the setting for the film *Out of Africa*. It is classic savannah – grasslands, where animals are plentiful and the vistas spectacular. In this dreamlike land, animals live in freedom, and the Maasai tend their cattle, all sharing the same land with minimal conflict. You will have three days of wildlife-viewing opportunities in the Maasai Mara Reserve, also known as the “Jewel of Africa,” a site with one of the largest and the most spectacular animal migrations in the world. The reserve is inhabited by many of Africa's most popular wild animals, including lion, cheetah, elephant, leopard, black rhino and hippo. There are also over 500 resident species of birds in the park including ostrich, larks and sunbirds as well as the lovely Lilac-breasted Roller.



The area is famous for rolling grassland and for the Mara River, which runs through the reserve from north to south. The reserve covers an area of 700 square miles and forms part of the Serengeti ecosystem, hosting the world famous spectacle of the annual migration of up to two million wildebeest, thousands of zebra and an escort of carnivores from the Serengeti plains that follow the rains and succulent new grass. A costly trek as many of the lame, laggard and sick will fall prey to the ravaging pack of predators and many more will die in the swirling flood waters of the Mara River as they try to cross it. While your tour is not scheduled during the migration, the abundant resident wildlife will truly thrill you!

Optional activities abound while you're in the Maasai Mara. You can try a balloon safari for an exhilarating experience over the savannah as the early sun rises and the animals are more active. Or, take a short flight to Lake Victoria, where either at Mfangano or Rusinga Islands you can see the life of the natives who rely on fishing and what the lake has to



offer – in fact, you can try your hand at fishing as many a times visitors can catch up to 100-pound Nile perch. If fishing is not your thing, there’s a paleoanthropological site to be visited, and the area is lovely. Duties permitting, a Maasai warden will discuss current conservation issues faced in the Mara. If you wish, for a nominal fee, you can also visit a Maasai Village to experience this nomadic tribe’s way of life and see their colorful culture.

Your luxury tented camp, the Ashnil Mara Camp is perfectly positioned close the Mara River famous for the river crossing during the great Wildebeest Migration. Accommodation is offered in 30 luxury tents which sit alongside the riverbank. The wide-spaced and secluded rooms have been individually styled in exuberant bush colors and feature large spacious en-suite bathrooms, walk-in closets and a sun deck for relaxation while watching game. The restaurant serves buffet meals, while the open-air bar serves a wide selection of beers, cocktails and liqueurs. There is a modern lounge decorated with a special African touch where in the evenings, you can enjoy the breathtaking sunset and discuss the day's wildlife sightings. Overnights at the ASHNIL MARA CAMP. (B,L,D Daily)

DAY 12 ~ SUNDAY ~ JUNE 3
MAASAI MARA/NAIROBI/EN ROUTE

A last chance to photograph that awesome sunrise before driving back to Nairobi. (An optional flight between the Maasai Mara and Nairobi is available at a cost of \$300 per person.) A day room will be supplied for you at the STANLEY HOTEL. This afternoon, you may opt to shop in town, or at the African marketplace, or bask in the sun at the lovely pool of your hotel. Soon you are escorted to the airport for your flight to London. As your journey comes to a close, you say a fond farewell to your driver/guides and naturalist and promise to come back in the not too distant future. (B)

DAY 13 ~ MONDAY ~ JUNE 4
LONDON/FRESNO

This morning your jet lands in London where you connect with your flights home, bringing with you the memories of all the wonderful sights of East Africa. (Meals Aloft)



OPTIONAL EXCURSIONS IN THE MAASAI MARA



BALLOON SAFARI

Experience an exhilarating balloon safari for the most amazing way of viewing wildlife. It begins in the early morning and you have an hour of uninterrupted views of wildlife from the air – the best way to see the migration and the incessant movement of animals in the Mara. Upon landing, enjoy a champagne brunch, set especially for you in the middle of the plains. Zebra and wildebeest may be your dining guests, and Africa's colorful birds may be vying for a crumb of your bread. At present, the cost is \$450 per person.

LAKE VICTORIA

Lake Victoria is the source of the Nile River and the second largest freshwater lake in the world. Your early morning flight takes you over the sweeping landscapes of the Mara, to Rusinga or Mfangano Islands, where you'll enjoy breakfast. Native wildlife consists of monitor lizards, over 100 species of exotic birds, and spotted necked otters that may be playing along the water's edge. Picturesque fishing dhows can be viewed on the lake, and you can visit some unspoiled traditional fishing villages. One of the favorite activities is trying your luck at fishing for giant Nile Perch, sometimes weighing up to 100 pounds. After lunch, fly back to your accommodation in the Mara in time for your afternoon wildlife run. At present, the cost is \$496 per person.



Reservations for either of these two excursions are necessary before departure from the U.S.A, if you wish to be guaranteed a seat. Full payment must be forwarded to Classic Escapes, 58-25 Queens Blvd., Woodside, NY 11377 to be received at least three weeks prior to departure. If your trip does not materialize due to weather or other reasons, your payment will be refunded upon returning to the U.S.A. However, if you should cancel for any reason, payment is non-refundable.

INCLUSIONS

- Superior accommodations throughout as indicated or similar.
- American breakfast in Nairobi; all meals while on safari. Other meals as indicated.
- All wildlife viewing by minibus, driven by a naturalist driver/guide.
- Complimentary bottled water in vehicles.
- Ralph Waterhouse will accompany the group with a minimum of 6 travelers.
- Professional Naturalist with a minimum of 10 passengers.
- All applicable hotel and lodge taxes and gratuities for baggage handling.
- All park entry fees.
- Complimentary baggage tags and passport wallet.

EXCLUSIONS

- Round trip air transportation between Fresno and Nairobi (quoted separately.) Other departure cities are possible at additional cost.
- U.S. and foreign airport taxes.
- Passport and visa fees and service charges for obtaining visas.
- Excess baggage charges levied by airlines.
- Meals and beverages, other than specified.
- Gratuities to naturalist, driver/guides and other conveyance attendants.
- Laundry and other items of a personal nature.
- Personal and baggage insurance.
- Cost for anything not specifically mentioned in the listing above.
- Optional insurance coverage is available for Baggage, Accident and Trip Cancellation/Interruption at special low cost group rates.

Please Note That The Itinerary Sequence Is Correct At The Time Of Writing,
But Is Subject To Change.

THINGS YOU NEED TO KNOW ABOUT KENYA

Participants:

- Must be able to climb in and out of, as well as move around in confined quarters within safari 4 x 4 vehicles, minibuses, and small aircrafts unassisted. People need to be willing to rotate seats.
- Must be able to tolerate riding on uncomfortably uneven, bumpy roads (some with many potholes) for long periods of time (6-9 hours maximum), as well as some off-road experiences when opportunities allow.
- Must be able to stand and/or walk moderate distances when visiting villages, towns, or other sites. This walking will be on uneven ground or uphill, often at altitudes many people are not used to.
- Should generally be in good health and prepared to travel in locations without medical facilities.

In general, this trip requires:

- Flexibility and good humor – unexpected changes and/or glitches will occur
- A spirit of adventure and curiosity
- Interest in and willingness to appreciate a destination with a modest infrastructure and a bending definition of comfort. That being said, some locations are nestled in absolute luxury where pampering is the norm.

Air Schedules:

Choosing the best possible air arrangements for our travelers is always a challenge. We work with many airlines that offer the best level of service, routings and value for our programs. While there may indeed be more direct routings available with another airline, the cost of these flights may not be within the budget that allows us to give you the best value possible. If you prefer to purchase your own international air, please feel free to choose the “land only” rate for this program. **The start and end city for the land only program is Nairobi, Kenya.**

Upon registration, you must provide your full legal name as it appears on your passport. In the event an airline ticket is issued with incorrect information you have provided, you will be responsible for charges associated with reissuing the ticket.



BRING-A-BOOK FOUNDATION

Your safari will include a visit to a local school. We encourage you to bring colorful books and magazines, as well as school supplies such as pens, paper, crayons, soccer balls, etc., which you can present to the children during your visit. Many of these children have never owned a book in their life and the connection you'll make with them is invaluable. You'll find that children in the schools are eager to meet with visitors, practice their English, learn about your culture and proudly share their own. You are often welcomed with a local song or dance.

After seeing schools first hand, meeting the dedicated teachers working under the most difficult conditions and children hungry for knowledge, many travelers have wanted to help the schools they visited or continue to support a child's learning opportunities after they return to their homes. Bring-A-Book is an innovative effort adopted by Classic Escapes to expand education opportunities for school children. The Bring-A-Book Foundation is a registered Kenyan Charitable Trust that was created as a way to facilitate travelers' wishes to help the schools and is used to get books into the hands of children as quickly and economically as possible. With compassionate ground operators such as Rangers Safaris, Wilderness Safaris and &Beyond, Classic Escapes has expanded the reach of BAB to Tanzania, South Africa and Zambia, and plans to expand to other countries as well. Information will be given to you with your final documents, but if you wish to help further, feel free to call Classic Escapes at 800-627-1244 for details.



CLASSIC ESCAPES CONSERVATION FUND

In keeping with our mission to provide exciting, educational, and fun-filled experiences that nurture and directly support the diverse wildlife and cultures we visit around the world, Classic Escapes has established the Classic Escapes Conservation Fund to ensure that a percentage of all profits go to support conservation and wildlife researchers performing their critical work in the field. Project support has included environmental education efforts in India and Bhutan, wild dog and cheetah conservation in Botswana, Kenya and Namibia, and global Earth Day education via school internet programs. By traveling with Classic Escapes, you are supporting travel as a tool for building the mutual respect, awareness and understanding that are vital to preserving this planet for future generations.

Schedules, accommodations and prices are accurate at the time of writing. They are subject to change.



YOUR JOURNEY AT A GLANCE

INCLUDING: NAIROBI, SAMBURU RESERVE, MOUNT KENYA, LAKE NAKURU NATIONAL PARK & THE MAASAI MARA RESERVE

SPONSORED BY: CALIFORNIA STATE UNIVERSITY, FRESNO, DIVISION OF CONTINUING & GLOBAL EDUCATION, FRESNO

ESCORTED BY: RALPH WATERHOUSE

DATES: MAY 23 TO JUNE 4, 2012

<u>COST:</u> PER PERSON, BASED ON DOUBLE OCCUPANCY	MAIN PROGRAM
MAIN PROGRAM – LAND ONLY	\$4,495 PER PERSON
SINGLE ROOM SUPPLEMENT*	\$395 PER PERSON, ADDITIONAL
ESTIMATED AIRFARE FROM FRESNO, ROUNDTRIP, ECONOMY	\$2,200 PER PERSON
ESTIMATED DEPARTURE TAXES & FUEL SURCHARGES (CURRENTLY, SUBJECT TO CHANGE)	\$751 PER PERSON

*SINGLE SUPPLEMENT IS VALID FOR FIRST TWO SINGLE ROOMS BOOKED. IF MORE THAN TWO SINGLE ROOMS, ADDITIONAL SUPPLEMENT WILL APPLY. SINGLES ARE ASSIGNED ON A FIRST COME/FIRST SERVED BASIS.

DEPARTURE CITIES: FRESNO

(OTHER DEPARTURE CITIES AVAILABLE UPON REQUEST AT ADDITIONAL COST)



CONDITIONS OF TRAVEL:

HOW TO BOOK: Fill out the reservation form below and send it to Classic Escapes Inc., 58-25 Queens Blvd., Woodside, NY 11377, together with a deposit of \$750 per person, as well as your insurance payment if you wish to take advantage of the pre-existing medical condition exclusion. On receipt of your signed reservation form and deposit, we will, subject to availability, reserve your place on your tour. When we send off your confirmation invoice, your booking is confirmed and accepted by us. Final payment is due not later than 75 days prior to departure (March 9, 2012). Final documents will be sent to you approximately two weeks prior to departure.

AIR TRANSPORTATION: Roundtrip economy-class jet transportation from FRESNO via VIRGIN ATLANTIC AIRWAYS and KENYA AIRWAYS and/or other IATAN carriers. Rates based on special promotional fares and cancellation fees apply once tickets are issued. Departures from other cities in the USA are possible at additional cost. Kindly inquire at the time of reservation.

DEPARTURE TAXES: Please note the amount of departure tax reflected on the Reservation Form is subject to change, at the discretion of governments and airlines, and with no advance notice. Should this occur, you will be invoiced prior to departure for any additional taxes imposed.

AIRLINE SEATING: For **AMERICAN AIRLINES/KENYA AIRWAYS**, we request seats together for the group. All planes are non-smoking. We can request a seating preference on your behalf, however this is only a request and not guaranteed. Requests should be made in writing no later than 60 days prior to departure. Bulkhead and/or emergency row seats can only be requested at airport check-in on the day of departure. Boarding passes will only be issued at the airport on the day of departure. You may inquire during check-in to have a seating change made, however this change is based on availability and is at the sole discretion of airport staff.

FREQUENT FLYER MILEAGE At time of publication, **American Airlines** is a partner with British Airways, Cathay Pacific, Finnair, Iberia, Japan Airlines, LAN Ecuador, LAN Argentina, LAN Peru, LAN Express, Malev Hungarian Airlines, Qantas Airways and Royal Jordanian Airlines, Aer Lingus, Air Pacific, Air Sahara, Air Tahiti Nui, Alaska Airlines/Horizon Air, Brussels airlines, El Al, Gulf Air, Hawaiian Airlines, Mexicana, TAM and Turkish Airlines.. At the time of publication, **Kenya Airways** is a partner with KLM Royal Dutch Airlines, Precision Air and Northwest Airlines. You may obtain frequent flyer mileage on any of these carriers. Present your frequent flyer card for all flight check-ins and keep the boarding passes until you receive a statement with the mileage credit.

BAGGAGE: International flights from the U.S. allow two pieces of checked luggage, each not exceeding 50 lbs. However we recommend you travel as light as you can manage. **The baggage limit on domestic flights is one piece at 33 lbs. per person (plus a carry-on bag.)** Also, the size and the structure of the bag is limited. Soft duffel bags are ideal. Large suitcases are virtually impossible to stow on smaller aircraft and vehicles and therefore should not be used. **WE HIGHLY RECOMMEND THAT YOU OBTAIN THE OPTIONAL INSURANCE POLICY.**

ACCOMMODATIONS: You will marvel at the wonderful accommodations provided throughout your tour. All rooms have private facilities, and all rates are based on double occupancy. Most rooms are twin-bedded, but kingsize beds are occasionally available and should be requested in advance. Accommodations listed in this itinerary are correct at time of writing, but on rare occasions can change for similar lodging.

SINGLE SUPPLEMENT: Rate quoted is valid for first two single rooms booked. If more than two single rooms, additional supplement will apply. Singles are assigned on a first come/first serve basis. Single accommodations are not guaranteed, but will be provided at additional cost if available (see reservation form for cost.) The single room supplement pays for privacy, not better accommodations. On occasion, in smaller lodges and camps, you may be required to share with other members of your tour group if single rooms are not available upon check-in. If this is the situation, appropriate per diem refunds are made to passengers in the event they paid for a single room but had to share during any portion of their trip. For passengers who are traveling alone and wish to share a room with another tour member, we will do our best to provide a roommate. However, if this is not possible, you will be required to pay the single room supplement prior to your departure from the USA.

MEALS: No meals are provided in Europe. Enjoy all meals on safari while in Kenya. American breakfast only is provided in Nairobi.

WILDLIFE VIEWING: Your tour will be conducted in minibuses throughout. All are guaranteed a window seat.

TRANSFERS: Roundtrip transfer of travelers between airports and hotels are included in the tour when arriving on group flights. If travelers make their own air arrangements, they will be subject to extra transfer fees.

TIPS AND TAXES: Gratuities for baggage handling, service charges and taxes imposed by hotels, lodges and tented camps, and entrance fees to all reserves as outlined in the itinerary are included. U.S. and foreign airport taxes are not included and will be billed prior to your departure. Tips to driver/guides are not included and are at the discretion of the tour members. A suggested tipping chart will be forwarded with the final documents.

INOCULATIONS: We would suggest you contact your personal physician or local health department for their recommendations as to inoculations. At the time of printing, no vaccinations are required for entry into Kenya. However, **it is also a sensible precaution for**



visitors to take one of the preventive pills that are in common use against malaria. Water is NOT safe to drink throughout and it is always advisable to drink bottled water which will be provided for you free of charge in the vehicles.

RATES: All rates quoted are based on tariffs and value of foreign currencies in relation to the U.S. dollar in effect as of June 22, 2010, and are subject to change. Rates are based on a minimum of 10 passengers traveling together (with a maximum of 24 passengers, including Organization escort). The right is reserved to levy a surcharge if minimum is not met, but that is rarely done. We will do our utmost to keep to the prices as published. Should increases be forced on us by airlines, exchange rates, etc., we reserve the right to surcharge.

ESCORT: Group will be accompanied by Ralph Waterhouse with a minimum of 6 passengers.

TRIP INFORMATION: Upon receipt of your application, instructions will be sent to you concerning all aspects of your trip, such as itinerary, photographic equipment, documents, clothing, insurance, etc.

INVOICING: Final invoicing of your trip will be done approximately four months prior to departure. Final payment is due 75 days prior to departure. (March 9, 2012)

FINAL DOCUMENTS: Final documents and tickets will be sent to you approximately two weeks prior to departure. We regret to advise that no documents can be released if final payments are not received.

PAYMENT SCHEDULE: A deposit of \$750 per person must be submitted with each application, as well as your insurance payment if you wish to take advantage of the pre-existing medical condition exclusion. Deposits may be paid by check or charged to American Express, MasterCard, Visa or Discover. Final payment is payable by check or money order ONLY and is due no later than 75 days prior to departure. (March 9, 2012)

CANCELLATIONS: Cancellations are only effective on receipt of written notification. The following per person fees are applicable on this safari:

- Up to 75 days prior to departure, less \$250.00 handling fee.
- 74-60 days prior to departure, deposit is forfeited on the trip..
- 59-45 days prior to departure, less 50% of tour cost.
- Less than 45 days prior to departure, refund is dependent on amount recoverable from overseas suppliers, up to 100%.

These cancellation fees are also in addition to any imposed by airlines. **WE STRONGLY RECOMMEND THAT YOU OBTAIN THE OPTIONAL INSURANCE POLICY. INFORMATION WILL BE SENT TO YOU UPON RECEIPT OF RESERVATION FORM. INSURANCE PREMIUMS ARE NOT REFUNDABLE.**

DEVIATIONS: Should additional reservations be required, including extensions in Europe or in Africa, we will happily make all the arrangements. However, there will be an extra charge of \$150 per person for such deviations, over and above the cost of the services required.

CHANGE FEES: Once you reserve your tour, changes are possible subject to availability of air or land space at the time of request. Should there be any change fees imposed by airlines or ground operators, or additional costs incurred due to availability of any space, this cost will be invoiced to you.

LATE BOOKING FEE: Classic Escapes reserves the right to impose a late booking fee to offset additional administrative costs for any reservations received 60 days (or closer) to the program's departure date. This fee is \$250 per person, over and above any costs incurred by airlines and suppliers

NOT INCLUDED: Cost of passport and visa fees, and service charges for obtaining visa fees; excess baggage charges levied by airlines; meals other than specified; beverages and meals not specified in itinerary; gratuities to driver/guides and other conveyance attendants; laundry and other items of a personal nature; gratuities not imposed by hotels and/or restaurants for included services; optional personal, baggage and tour cancellation insurance policy; U.S. and foreign airport taxes; cost for anything not specifically included in listing above.

WILD ANIMALS: Please be aware that this safari may take you into close contact with wild animals. Attacks by wild animals are rare, but no safari into the African wilderness can guarantee that this will not occur. Neither the company, nor their employees, nor agents can be held responsible for any injury or incident on the safari. Please note that not all camps are fenced.

PASSPORT & VISAS: The onus is upon the guest to ensure that passports and visas are valid for the countries visited. The company, their staff and their agents cannot be held liable for any visas, etc. not held by the guests, nor the cost of visas. Visa information will be forwarded upon receipt of reservation.

RESPONSIBILITY: Neither Classic Escapes (the Company) or California State University, Fresno or Ralph Waterhouse or any of their officers, agents, assigns or volunteers shall be liable nor any person or agent acting for, through or on behalf of the Company shall be liable for any loss or damage whatsoever arising from any cause whatsoever, and without restricting the generality of the foregoing, shall particularly not be responsible for loss or damage arising from any errors or omissions contained in its brochure or other literature, loss or damage caused by delays, sickness, theft, injury or death. In addition the Company shall have the right at any time at its discretion to



cancel any tour or the remainder thereof or make any alteration in route, accommodation, price or other details and, in the event of any tour being rendered impossible, illegal or inadvisable by weather, strike, war, government or interference or any other cause whatsoever, the extra expenses incurred as a result thereof shall be the responsibility of the passenger. The Company may at its discretion and without liability or cost to itself at any time cancel or terminate the guest's booking and in particular, without limiting the generality of the foregoing, it shall be entitled to do so in the event of the illness or the illegal or incompatible behavior of the guest, who shall in such circumstances not be entitled to any refund. The person making any booking will, by the making of such booking, warrant that he or she has authority to enter into a contract on behalf of the other person included in such a booking and in the event of the failure of any or all of the other persons so included to make payment, the person making the booking shall by his/her signature thereof assume personal liability for the total price of all bookings made by him/her.

RELEASE OF LIABILITY: All participants in this safari are required to sign and submit the California State University, Fresno Release of Liability Form attached.

PHOTOGRAPHY: The Company reserves the right without further notice to make use of any photograph or film taken on the safari by our photographers without payment or permission. We guarantee that no photographs of a compromising nature will be used.

CHANGES TO SCHEDULES: Although every effort is made to adhere to schedules it should be borne in mind that the Company reserves the right and in fact is obliged to occasionally change routes and camps on safaris as dictated by changing conditions. Such conditions may be brought about by seasonal rainfall on bush tracks, airfields and in wildlife areas, by wildlife migrations from one region to another, or airline or other booking problems, etc.

REFUNDS: While the company uses its best endeavors to ensure that all anticipated accommodation is available as planned, there shall be no claim of any nature whatsoever against the Company for a refund either in the whole or part, if any accommodation or excursion is unavailable and a reasonable alternative is not found. If the guest is unable to use any service provided in the itinerary, then there are no refunds due.

AIRLINE CLAUSE: The airlines concerned are not to be held liable for any act, omission or event during the time the passengers are not on board their planes or conveyance. The passengers' tickets in use by the airline or by other carriers concerned when issued shall constitute the sole contract between the airlines and the purchaser of these tickets and/or passengers.

DELAYS: We cannot be held liable for any delays or additional costs incurred as a result of airlines not running to schedule. If one of our guides is unable to take a safari due to illness, etc. we reserve the right to substitute with another guide. This agreement is made subject to and shall be governed by and construed according to the laws of the country in which the safari takes place. Classic Escapes acts merely as an agent for the operating companies. To the best of our knowledge the itinerary is correct at the time of printing. We cannot be held responsible for any inaccuracies or changes that may occur after printing.

CONSENT: The payment of the deposit OR any other partial payment for a reservation on a safari constitutes consent by all guests covered by that payment to all provisions of the conditions and general information contained in this brochure whether the guest has signed the booking form or not. The terms, under which you agree to take this safari, cannot be changed or amended except in writing signed by an authorized director of the Company.

INSURANCE: It is a condition of booking that the sole responsibility lies with the guest to ensure that they carry the correct comprehensive travel and medical insurance to cover themselves, as well as any dependants/traveling companions for the duration of their trip. This insurance should include coverage in respect of, but not limited to, the following eventualities: cancellation or curtailment of the program, emergency evacuation expenses, medical expenses, repatriation expenses, damage/theft/loss of personal baggage, money and goods. Classic Escapes, including their representatives, employees and agents will take no responsibility for any costs, losses incurred or suffered by the guest, or guest's dependants or traveling companions, with regards to, but not limited to, any of the above mentioned eventualities. Guests will be charged directly by the relevant service providers for any emergency services they may require, and may find themselves in a position unable to access such services should they not be carrying the relevant insurance cover. **PLEASE NOTE INSURANCE PREMIUMS ARE NON-REFUNDABLE SHOULD TOUR BE CANCELED BY PARTICIPANT.**

INSURANCE PACKAGE: Classic Escapes offers a comprehensive insurance package, which allows the Pre-Existing Condition Exclusion to be waived if purchased within 7 days of the initial trip payment. Details can be found on our website at <http://www.classicescapes.com/insurance.html>. or call our office for more details (800-627-1244). If obtaining this pre-existing condition waiver is not of importance to you, you may opt to wait until you receive your pre-departure packet of information which will include details on the insurance package.

INSURANCE PREMIUM: See premium schedule below, or call us for the exact amount and information on the policy. This is applicable to all coverage contained in the policy. You must be medically able to travel when you pay your premium. In the event that a claim is filed, the injury or illness must be substantiated to the Claims Department.

The cost of your insurance premium is based on the TOTAL cost of your trip including: the main itinerary, airfare, airline taxes, single supplements, optional excursions and optional extensions. The premium for your tour will be calculated as follows:

Schedules, accommodations and prices are accurate at the time of writing. They are subject to change.



TOTAL TOUR COST	PREMIUM PER PERSON
\$3,501 - \$ 4,000	\$273
\$4,001 - \$4,500	\$308
\$4,501 - \$5,000	\$340
\$5,001 - \$5,500	\$407
\$5,501 - \$6,000	\$445
\$6,001 - \$6,500	\$483

Please contact Classic Escapes if you have any questions or need assistance calculating your premium.

PLEASE NOTE INSURANCE PREMIUMS ARE NON-REFUNDABLE SHOULD TOUR BE CANCELED BY PARTICIPANT



**RELEASE OF LIABILITY, WAIVER OF RIGHT TO SUE, ASSUMPTION OF RISK
AND AGREEMENT TO PAY CLAIMS**

Activity: Classic Escapes - The Best of Kenya
Activity Date(s) and Time(s): May 23 to June 4, 2012
Activity Location/Facility: off-campus

In consideration for being allowed to participate in this Activity, I release from liability and waive my right to sue the State of California, the Trustees of The California State University, California State University, California State University, Fresno, California State University, Fresno Association Inc., California State University, Fresno Foundation, Inc, California State University Fresno Athletic Corporation, and their employees, officers, volunteers and agents (collectively "University") from any and all claims, including the University's negligence, resulting in any physical injury, illness (including death) or economic loss I may suffer because of my participation in this Activity, including any travel to and from the Activity.

I am voluntarily participating in this Activity. I understand that there are risks, such as physical and/or psychological injury, pain, suffering, illness, disfigurement, temporary or permanent disability or even death, which may occur from my participation in this Activity. These injuries or outcomes may arise from my own or other's actions, inactions, negligence, or from the condition of the Activity location(s) or facility (ies). Nonetheless, I assume all related risks, whether known or unknown to me, of my participation in this Activity, including travel to and from the Activity.

I agree to hold the University harmless from any and all claims, loss or damage to my personal property, liabilities and costs, including attorney's fees, as a result of my participation in this Activity, including travel to and from the Activity. If the University incurs any of these types of expenses, I agree to reimburse the University.

If I need medical treatment, the University is authorized to obtain medical treatment for me. I will be financially responsible for any costs of such treatment. I agree that I will not hold the University responsible for any claims resulting from any medical treatment. I am aware that the University does not provide health insurance for me and I should carry my own health insurance.

I am 18 years or older. I have read this document, and I am signing it freely. I understand the legal consequences of signing this document, including (a) releasing the University from all liability, (b) waiver of my right to sue the University, (c) and assumption of all risks of participating in this Activity, including travel to and from the Activity.

I understand that this document is written to be as broad and inclusive as legally permitted by the State of California. I agree that if any portion is held invalid or unenforceable, I will continue to be bound by the remaining terms.

Participant Name: _____ Date: _____

Signature: _____

If Participant is under 18 years of age:

I am the parent or legal guardian of the Participant. I have read this two-page document, and I am signing it freely. I understand the legal consequences of signing this document, including (a) release of University from all liability on my and the Participant's behalf, (b) waiver of my and the Participants' right to sue, (c) and assumption of all risks of the Participant's participation in this Activity, including travel to and from the Activity. I allow Participant to participate in this Activity. I understand that I am responsible for the obligations and acts of Participant as described in this document. I agree to be bound by the terms of this document.

Signature of Minor Participant's Parent/Guardian

Date

Minor Participant's Name

RESERVATION FORM:

CSU FRESNO/WATERHOUSE~KENYA

12AFC0523/CSUF

Enclosed is my deposit for \$ _____ (\$750 per person) to hold _____ place(s) on the Classic Safari to Kenya departing on May 23, 2012. Cost is \$4,495 per person, double occupancy, land only. Additional international air from Fresno is \$2,200, plus \$751 in departure taxes & fuel surcharges. (Currently - subject to change).

Final payment due date is: March 9, 2012

Please make check payable to CLASSIC ESCAPES and mail to 58-25 Queens Blvd., Woodside, NY 11377

OR

Charge deposit to: MasterCard Visa American Express Discover

(Credit Card Authorization form needs to be completed and returned to Classic Escapes via mail or fax to 718-204-4726)

Deposits can be made by credit card; however, all final payments are required to be made by check or money order only.

1) NAME (As appears on passport): Mr. Mrs. Ms. _____

2) NAME (As appears on passport): Mr. Mrs. Ms. _____

NAME FOR NAME BADGE IF DIFFERENT FROM ABOVE: 1) _____ 2) _____

STREET ADDRESS: _____

CITY: _____ STATE: _____ ZIP: _____

PHONES: HOME: () _____ OFFICE: () _____ MOBILE: () _____

E-MAIL ADDRESS: _____ FAX: () _____

- I certify that I have not recently been treated for, nor am I aware of any physical or other condition or liability that would create a hazard to myself or the other members of this tour.
- The two of us above are sharing a room and, where possible, would like a room with: ONE TWO Beds (Make one selection only)
- I am sharing with _____ (form sent separately)
- I need assistance in securing a roommate. I understand if Classic Escapes (the tour operator) cannot locate one for me by final payment date, I agree to pay the additional single supplement amount. I prefer to share with: Smoker Non-smoker
- Optional flight between Maasai Mara & Nairobi: \$300 per person, additional
- I desire single accommodations, if available, and will pay the single supplement additional cost of: \$395

- Please make my/our round trip air reservations on the group flights from Fresno via American Airlines/Kenya Airways.
 - Please make domestic round-trip air reservations for me from my home city: _____ to connect with the group flights and let me know the additional cost.
Please send me information on air upgrades for: Business/First Class (only one class - business/first - exists)
Airline Seating Preference Aisle Window Frequent Flier # _____
- **We can request a seating preference on your behalf, however this is only a request and NOT guaranteed, as some seating assignments may be airport check-in only. Requests should be made in writing no later than 60 days prior to departure. Bulkhead and/or emergency row seats can only be requested at airport check-in on the day of departure. Also note that even if we do obtain your preferred seat, it is not guaranteed that the seat will be provided during check-in as there might be equipment changes that nullify our selection.
- I/We will make own air arrangements and will provide you with an itinerary before trip departure.

- Optional Insurance - See attached schedule for exact cost and include with your initial deposit if you wish to take advantage of the pre-existing medical condition exclusion. Yes, I wish to purchase insurance now No, I will purchase insurance at a later date or provide my own through another source.
- How did you hear about this trip: _____

All rates quoted are based on tariffs and value of foreign currencies in relation to the U.S. dollar in effect as of August 10, 2011, and are subject to change. Deposit is refundable up to 75 days prior to departure, less a \$250 per person handling fee - see cancellation penalties applicable as outlined on Conditions of Travel. **WE STRONGLY RECOMMEND THAT YOU OBTAIN TRAVEL INSURANCE. RESERVATIONS ARE ACCEPTED SUBJECT TO TOUR CONDITIONS AND WILL BE CONFIRMED ONLY IF ACCOMPANIED BY COMPLETED FORM SIGNED BY THE TOUR PARTICIPANT(S).**

IF YOU HAVE QUESTIONS, CALL: Ralph Waterhouse at 559-269-7326

SIGNATURE: _____ DATE: _____

SIGNATURE: _____ DATE: _____

CLASSIC ESCAPES INC.
58-25 Queens Blvd.
Woodside, NY 11377

(We recommend that you keep a copy of your selections as noted above for your future reference)



58-25 Queens Blvd., Woodside,
NY 11377
T: (718) 204-7077; (800) 627-1244
F: (718) 204-4726
E:info@classicescapes.com

CREDIT CARD PAYMENT AUTHORIZATION

Please Note: If you wish to charge your deposit to Visa, MasterCard, American Express or Discover, this authorization form MUST be completed and returned to us along with your reservation form before we can process your application.

I authorize (Classic Escapes Inc.) to charge my VISA/MASTERCARD/DISCOVER/AMEX listed below:

Name appearing on credit card _____

Card number _____ Expiration date _____

Card Verification Number* _____ Card Type _____

Billing address of credit card _____

Amount of transaction _____

Services rendered/Items purchased _____

Phone number _____

Signature _____ Date _____

***How To Locate Your Card Verification Number:**

(**Visa, MasterCard, Discover:** Locate the credit card number on the back of the card above the signature box. Enter the 3 digit number which follows the credit card number. **American Express:** Enter the 4 digit number found directly above and to the right of the credit card number.)

I understand that all rates quoted for this tour on which I'm making a payment are based on tariffs and value of foreign currencies in relation to the U.S. dollar in effect as of August 10, 2011 and are subject to change. Deposit is refundable up to 95 days prior to departure, less \$250 handling fee - see cancellation penalties applicable as outlined on Conditions of Travel.

- Up to 75 days prior to departure, less \$250 handling fee.
- 74-60 days prior to departure, deposit is forfeited.
- 59-45 days prior to departure, less 50% of tour cost.
- Less than 45 days prior to departure, refund is dependent on amount recoverable from overseas suppliers - up to 100%.
- These cancellation fees are also in addition to any imposed by airlines.

PLEASE NOTE: At times, our bank requires photocopy of credit card (both sides) and driver's license or document showing signature of cardholder, in order to process the charge. While it is not required at this time that you include these materials with your deposit, if our bank requests it, we will contact you for these copies.