



**EMORY
ALUMNI
ASSOCIATION**

CLASSIC
Escapes

58-25 Queens Blvd, Woodside, NY 11377
T: (718) 204-7077; (800) 627-1244
F: (718) 204-4726
E: info@classicescapes.com
W: www.classicescapes.com

Nature & Cultural Journeys
for the Discerning Traveler

**AMERICA'S TREASURES:
YOU ARE CORDIALLY INVITED TO JOIN
EMORY ALUMNI ASSOCIATION
ON A NATURE & WILDLIFE JOURNEY TO
YELLOWSTONE NATIONAL PARK
JULY 15 TO 20, 2012**





YELLOWSTONE NATIONAL PARK

For the next five days you will explore Yellowstone National Park, the place that inspired the world's first national park system. Even during the late 1800s when most of the west was undeveloped and wild, the geysers and hot springs along with the bountiful wildlife caused early explorers to realize they were standing on "sacred" ground. Today, 130 years after its designation, Yellowstone National Park continues to provide inspiration for the people of the world – a place recognized as an environmental treasure that should be set aside "for the benefit and enjoyment of the people" for generations to come.

YELLOWSTONE NATIONAL PARK WILDLIFE

The Park is home to one of the largest concentration of free roaming wildlife in the lower 48 states (the other is Grand Teton National Park). There are eight species of hoofed mammals, three species of wildcat and 70 species of smaller mammals. Almost 300 species of birds reside here, most notably the raven, Trumpeter Swan, Great Blue Heron, American White Pelican and American Dipper. It has the only significant grizzly bear population of 400-600, south of the Canadian border and 600 plus black bears. One of the largest herds of elk at 30,000 strong and the largest herd of bison dominate the park. Wolves were re-introduced into the Park in 1995 and have reached a population of over 230. The pronghorn deer has declined in numbers from a high of 600 to now only 200. Mule deer are prevalent at 120,000. The United State's national symbol, the Bald Eagle, numbers 200 plus and is the largest population in the continental U.S. Other wildlife that roams this park includes coyote, wolverine, pine marten, moose and bighorn sheep.

YELLOWSTONE NATIONAL PARK WILDFLOWERS

In June and July masses of wildflowers will be blooming throughout the Park from the shady, moist banks of rivers, streams and lakes, to the mountain meadows, rocky ledges and alpine slopes. The white to purple hood-like flowers of the monkshood, the cliff anemone's cream, deep rose and pink petals, the cup-shaped lavender-blue pasove and the hollow yellow spur petals of the yellow columbine – these are just a few of the many wildflowers that you may see in brilliant masses of color during your adventure.

YOUR GUIDE ~ JANET ARNOLD

Janet has been a tour director since 1999 and started her career leading tours in San Diego. She has studied Environmental Biology, and has also studied with a Native American medicine woman and learned an extensive amount about natural plants and herbs. She lives in San Diego and has hiked many trails around America's national parks and reserves. When she is not leading tours she is often off exploring on her own, hiking or biking and expanding her love of the outdoors. Janet is also a watercolor artist, often painting places she has visited. She is also a dancer and has been active in the folk dance communities for over 30 years.





YOUR ITINERARY

DAY 1~SUNDAY~JULY 15

ARRIVE/BOZEMAN/MAMMOTH HOT SPRINGS

Travel to Bozeman, Montana by your own arrangements. Upon arrival at Bozeman Airport, you will be met by your Classic Escapes Representative and begin your 85 mile drive to the North Entrance of Yellowstone National Park located in Gardner, Montana. Continue five miles south into Wyoming and your accommodation for this evening. In the early days, Yellowstone's visitors began their park explorations at Mammoth Hot Springs where the thermal waters, shimmering with a rainbow of colors, were believed to have curative powers. Now, the main attraction is the upper and lower terraces created by on-going deposits of travertine (*the Colosseum in Rome is largely made from travertine*) in the form of white rocks, creating a constantly changing living sculpture where each photograph captures a new image time and again. Due to its year-round access and comparatively mild winters, Mammoth has always been the headquarters for the park.



Situated at the base of Mt. Everts, Mammoth Hot Springs Hotel was built in the early 1900s and includes a spacious art deco lobby. The grounds may be dotted with the occasional elk enjoying the lush foliage. The hotel's accommodations are simple and comfortable, with a dining area and café grill for casual meals. Your rooms include private facilities. After this evening's welcome dinner at the hotel you may want to relax in the Map Room - named for a wall covered by a massive inlaid map of the United States.

Overnight at MAMMOTH HOT SPRINGS HOTEL. (D)

DAYS 2/3~MONDAY/TUESDAY~JULY 16/17

YELLOWSTONE NATIONAL PARK: MAMMOTH/TOWER-ROOSEVELT/CANYON/LAKE YELLOWSTONE

You will begin your visit of Yellowstone by exploring the upper loop. Stop at the Albright Visitor Center and Museum, formerly part of Fort Yellowstone built by the U.S. Cavalry to protect the park, and one of today's best remaining examples of a 1900 cavalry post. The bachelor officers' quarters now house a historical museum with exhibits focusing on the area's early history, including Native Americans (pre-1800), the mountain men (1807-1840), early exploration (1869-1871), the Army days, and early National Park Service. The Moran Gallery exhibits reproductions of watercolors by Thomas Moran and photographs of the 1871 Hayden survey made by William Henry Jackson.

Departing the Mammoth area, get set to explore the Gardner River and Canyon area. The accompanying scenery is a myriad of past and present terrains formed by glaciers and 700,000 year-old Basalt lava flows. Now, thick vegetation clusters around Rocky Mountain juniper, cottonwood and Douglas-fir trees that tempt elk. Low growing willow trees follow the river's edge where moose sightings are numerous. You may also see osprey, dipper and kingfisher looking for a tasty mountain river morsel. And watch the skies for the soaring Bald Eagle, whose territory is usually within two miles from any given water supply.





Your drive continues east towards the Tower-Roosevelt – an area that truly represents the on-going impact of geological events, past and present that have formed this fascinating Park. At every bend in the road, different beautiful and eclectic environments amaze and surprise – all formed by a combination of volcanic and glacier activities and the natural process of erosion.

Enjoy the following highlights:

- Specimen Ridge hosts the largest concentration of petrified trees in the world, along with petrified impressions of leaf formations, conifer needles and microscopic pollen species. Near Lost Lake trailhead is an ancient redwood, similar to those found at Specimen Ridge that is easily accessible for up-close viewing.
 - Dropping 132 feet into Tower Creek is one of the most spectacular falls in the Park – Tower Falls – framed by statuesque volcanic pinnacles.
 - Along the Yellowstone River near the end of the Grand Canyon of Yellowstone is a grouping of thermal springs called Calcite Springs. Likely inhabitants of the cliffs and gorges are bighorn sheep, Red-tailed Hawk and osprey. Thomas Moran’s paintings of this scene were part of the documentation presented to Congress that led to the establishment of the Park.
- The Grand Canyon of the Yellowstone is roughly 20 miles long, 1,000 feet deep and 2,500 feet wide and a relatively young formation at only 10,000 years old. Splashed with deep reds, oranges and coppers due to its high content of Rhyolite, a hard, somewhat volcanic rock has inspired many artists throughout the years. Scour the numerous cliffs for movement or enormous five-foot nests of twigs and branches; if lucky you may spot an osprey or hear the whistling sound it makes while hunting echoing off the canyon walls. Meadows along your drive make for common sightings of elk, moose and bison.



- With a surface area of 136 square miles and 110 miles of shoreline, Yellowstone Lake is the largest freshwater lake at a high elevation (7,737 feet) in North America, and also harbors the largest wild population of cutthroat trout, which are now threatened due to an illegally introduced population of lake trout.
- The Mud Volcano is a formation of concentric circles of churning mud with rising gases giving it an eerie ambiance. Nearby is the Sulphur Caldron, one of the most acidic springs in the park with a pH of

1.3, more than twice as acidic as battery acid. Its thrashing yellow waters should be treated with extreme caution. Other features which can be viewed from this overlook are Turbulent Pool and the crater of a large, active mudpot.



- Hayden Valley was once an extension of Yellowstone Lake, and the clay, silt and sand sediments covered by glacial debris has created a number of wet and swampy areas. Outstanding wildlife viewing can be found here, including bison, elk, deer and moose. Grizzly bears also inhabit these areas; however they are elusive and difficult to sight. Birders will be delighted at the cavalcades of species, such as Trumpeter Swans – identified by their black bills – White Pelicans, Bald Eagles and the graceful Great Blue Heron.

Of historical significance is the Fishing Bridge, originally built in 1902. The existing bridge was built in 1937 with a slightly different alignment. Historically a tremendously popular place to fish for cutthroat trout, however, because of the decline of the cutthroat population the bridge was closed to fishing in 1973. Anglers in this area are now limited to 'catch and release.' For those not inclined to fish, you may want to observe the numerous brown, rainbow and brook trout. Also, moose are often seen in the meadows and marshes along the creek. You may also stop by the Fishing Bridge Museum and Visitor Center which was built in 1931, and is a National Historic Landmark. Built of native rock and stone, it appears to rise out of a rock outcrop. Its distinctive stone-and-log architecture, known as "parkitecture," became a prototype for park buildings all around the country. The historic bird specimens by Carl Russell were installed in 1931 and provide a good overview of the birds of Yellowstone.



Your accommodations for the next two nights will be at Lake Yellowstone Hotel and Cabins listed on the National Register of Historic Places. Its doors opened in 1891, when touring the park by stagecoach was in vogue; now this classic, historic hotel has been restored to its 1920s grandeur. Located on the shores of Yellowstone Lake, it sits on a site long known as a meeting place for Indians, trappers, and mountain men. Make sure to visit the Sun Room, where you can sip your favorite cocktail as you enjoy wonderful views of the lake. There is often a piano or chamber music performance in the evening. The dining room has panoramic views of the lake, as well as excellent cuisine including a generous breakfast buffet and an inviting dinner menu that features entrees such as Idaho trout and bison prime rib. All rooms have private facilities.
Overnights at LAKE YELLOWSTONE HOTEL. (B,L,D Daily)



DAYS 4/5~WEDNESDAY/THURSDAY~JULY 18/19
YELLOWSTONE NATIONAL PARK: GRANT VILLAGE/WEST THUMB/OLD FAITHFUL

Discover the lower loop of this magnificent Park over the next two days. The West Thumb Geyser Basin is a steamy expanse of active and dormant geysers on the shores of Yellowstone Lake and below the water's surface. Geologists continue to study the West Thumb on the Lake's east side for clues about earth's early formation.



Enjoy the following highlights:

- A member of the 1870 Washburn Expedition reported a geyser where one could hook a trout, swing the pole around and dip it into a boiling pool, thus cooking it without taking it off the line. Hence the name Fishing Cone!



- Abyss Pool is one of the deeper hot springs in the Park, descending to depths of almost 60 feet. The spring's ever-changing glittering colors, from blue to emerald, and then various shades of brown – inspired a Park visitor in 1883 to describe it as “a great, pure, sparkling sapphire rippling with heat.”
- Originally called the ‘Mud Puffs’ by the Hayden Expedition of 1871, the Thumb Paint Pots vary with precipitation and ground water levels. Miniature mud volcanoes, three to four feet high, in various shades of red emit curling streams of steam. Surrounding them is a mud mixture that almost has a satiny consistency.
- In addition, you will learn about the fires that whipped through the Park in the summer of 1988. The enormous devastation was fueled by the driest conditions in the Park's recorded history, in combination with high winds, ended up scorching 36% of the Park. However, many of the plant species have adapted to centuries of natural fires; below-ground root systems typically remain viable and recover with increased productivity. Eighty percent of the Park's forests are made up of lodgepole pines that have cones sealed by resin which crack under intense heat and release the seeds inside, effectively re-seeding the forest. Boardwalks near and around Old Faithful allow you to

examine the on-going natural re-growth and educate you about fire ecology.

Learn more about the Park with a visit to the Grant Visitor Center, named after President Ulysses S. Grant, who signed the bill creating Yellowstone National Park in 1872. The center's location and construction in 1972 was a controversial project because it impacted a prime grizzly bear habitat and several cutthroat trout spawning streams. Peruse the various publications and view exhibits highlighting the 1988 fires, including a film entitled ‘Ten Years After.’

As you wander through the area surrounding Old Faithful and its remarkable number of geysers, you should realize that the Park is home to almost 60% of the world's geysers. Of course, one of the most famous attractions is the Old Faithful geyser – a historic example of the effects of Mother Nature's force upon the Upper Basin where more than 100 geysers can be found. For almost 150 years, visitors have experienced the thunderous and steaming wonder of its eruptions, which are spaced at fairly predictable times. Another ten geysers are fairly predictable as to when they will expel in thunderous pillars of steam, including Castle, Grand, Daisy and Riverside.

More hydrothermal activity can be found in the Lower Geyser Basin. The Great Fountain erupts skyward almost 200 feet, but only twice a day and the rangers can only predict its activity within a two hour





window. Nearby are the Fountain Paint Pots, their name derived from the oxidation in the mud bubbles in colors of red, pink, blue, yellow and brown. While you are here, the mud will be slightly watery due to rain and snow melts (by the end of summer as the water table drops the mud becomes much thicker).



Investigate the Firehole River that National Geographic magazine called the strangest trout stream on earth. The hot springs, geysers and other thermal features cause the temperature to flux between 40 degrees Fahrenheit upwards to highs of 80 degrees Fahrenheit and above. Known as an angler's paradise for brown and rainbow trout, there are only certain stretches of water on the river's 21 mile route where these wily fish may be found due to their preference for cooler water. It is also an excellent area to spot bison.

Your accommodations will be at Old Faithful Snow Lodge, the newest of the park's full service hotels, completed in 1999. A massive structure built with heavy timber beams and wrought-iron accents reflects the grand tradition of centuries-old lodges. Relax amidst soaring ceilings, natural lighting, a spacious lobby with a stone fireplace and a sitting room with comfortable chairs and writing desks. Rooms combine traditional accents with modern amenities. A restaurant, café, gift shop and lounge round out this rustic hideaway. Overnights at OLD FAITHFUL SNOW LODGE. (B,L,D Daily)

DAY 6~FRIDAY~JULY 20
YELLOWSTONE / BOZEMAN

This morning bid farewell to the rest of the group continuing on to Grand Teton, and transfer back to Bozeman for your homeward flight taking with you all the wonderful memories of this marvelous park. (B)





OPTIONAL 2-DAY POST-EXTENSION TO GRAND TETON NATIONAL PARK

A minimum of 8 passengers is required for this extension

DAY 6~FRIDAY~JULY 20

JACKSON HOLE

Bid the rest of the group farewell returning home today, and enjoy a leisurely, scenic drive as you pass through Grant Village and continue through the Red Mountains towards the south exit of Yellowstone National Park. This small range of mountains is completely contained within the boundaries of Yellowstone National Park. The name was derived from the prevailing color of the volcanic rocks which compose them. There are 12 peaks in the range, with 10,308-foot-high Mount Sheridan being the highest.

Jackson Hole is a valley located in west-central Wyoming and formed by the Teton Range on the western side and the Gros Ventre Range on the eastern side. The first descriptions of the valley were made in the journals of John Colter in 1806, the first Caucasian to see the valley; Native Americans had been using it for hunting and ceremonial purposes. Settlement began around 1870 and today it is a winter and summer playground for outdoor enthusiasts from around the world. Home to the Snake River and a gateway to Grand Teton National Park, opportunities for active adventures are boundless, such as skiing, snowboarding, hiking, rock climbing, mountain biking, horseback riding, fishing and kayaking. Artisans have also set up shop here with galleries featuring well-known artists, as well as craft fairs with local treasures.



Your home for the next two nights, Alpine House, is an intimate 22-room European-style inn surrounded by breathtaking scenery and situated in the heart of Jackson Hole, within walking distance of shops, galleries and restaurants. Century-old timber beams in combination with light, airy spaces cloak you in an atmosphere of tranquility and luxury. Each elegant



room is individually decorated with European antiques and fluffy down comforters that reveal extravagant linens. Enjoy beautiful baths, plush robes, all-natural bath amenities, television, air-conditioning and most rooms have private fireplaces and balconies. A sunny dining room provides gourmet breakfasts and top off your day with a glass of fine wine, beer or a specialty coffee drink at the espresso bar, or visit the Viking Bar. You may want to ease tired muscles after a day of sightseeing with a visit to the spa, featuring a Finnish sauna, a soak in the outdoor hot tub or a massage. There is high speed internet access in the lobby and high speed

wireless access in the rooms. Alpine House is a member of the Green Hotel Association and uses all natural products. Overnight at THE ALPINE HOUSE. (B, L) www.alpinehouse.com



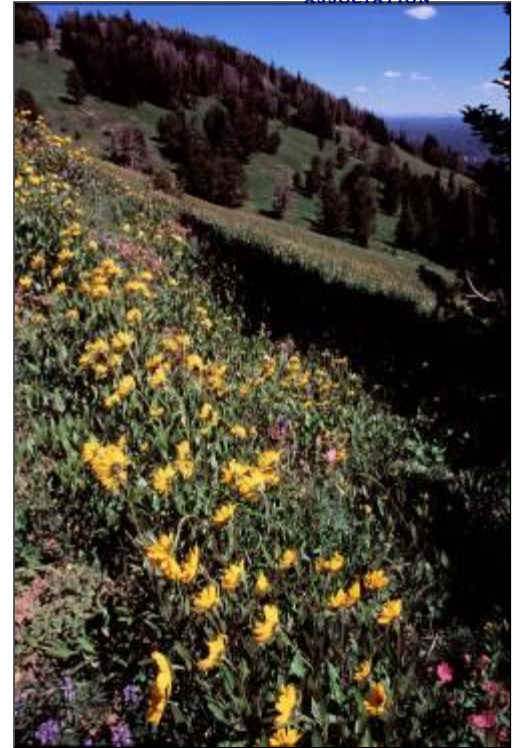
DAY 7~SATURDAY~JULY 21

JACKSON HOLE / GRAND TETON NATIONAL PARK

Explore Grand Teton National Park dominated by the Teton Range that is an active fault-block mountain front 40 miles long and almost nine miles wide. The highest peak is the Grand Teton at an elevation of 13,770 feet with 12 other peaks at elevations of over 12,000 feet. Seven morainal (combination of earth and stone) lakes lie at the base of the Range and there are also over 100 alpine and back country lakes. Approximately 50 miles of the Snake River's 1,056 miles lies within the Park. A wide range of habitats may be found here, including alpine meadows, sagebrush flats, lodgepole pine forests and mountain streams.

You may want to choose from Park-sponsored tours, such as String Lake Stroll, Wildflower Hike, Inspiration Point Hike, Naturalists Choice Hike, Fire & Ice Cruise, Lakeshore Stroll or Swan Lake High (subject to change based on weather, dates and other unforeseen circumstances).

In the afternoon, embark on a scenic river-rafting trip on the Snake River. A professional naturalist-guide will lead you on an adventure-filled journey opening your eyes to the natural treasures of the Park along the river's shores - wildflowers, cottonwood and spruce forests where you may see moose, elk, beaver, heron, duck, osprey and possibly a Bald Eagle. Disembark in the heart of the Park for a mountain cookout, than return to Jackson Hole early evening.



Wildlife is abundant due to the diverse habitats inside the Park. Various species of the following mammals are commonly seen; shrew, chipmunk, marmot, squirrel, flying squirrel, gopher, beaver, vole, porcupine, muskrat, weasel, coyote and badger. Other mammals uncommonly seen are snowshoe hare, river otter, elk, mule deer, moose, pronghorn and bison. Count yourself very lucky if you see any of the following animals: grizzly bear, red fox, grey wolf, mountain lion, lynx, bobcat, white-tailed deer and bighorn sheep.

Bird watchers will be impressed and amazed at the over 300 species found in the park, including 27 hawk species. Highlights based on habitat include the following:

- Lodgepole Pine Forests: Olive-sided Flycatcher, Yellow-rumped Warbler, Ruby-crowned Kinglet, Mountain and Black-capped Chickadee, Dark-eyed Junco, Tree and Violet-green Swallow, Sawwhet Owl and numerous woodpecker species.
- Sagebrush Flats: Sage Grouse, Vesper and Brewer's Sparrow and Sage Thrasher.
- Alpine: Golden Eagle, Clark's Nutcracker, Rosy Finch, White-crowned Sparrow and Water Pipet.

Schedules, accommodations and prices are accurate at the time of writing. They are subject to change



EMORY
ALUMNI
ASSOCIATION

- Aquatic and Riparian: Bald Eagle, Common Snipe, White-crowned and Lincoln Sparrow, Common Yellowthroat, American Dipper and Trumpeter Swan.

There are also 16 fish species (including Yellowstone and Snake River cutthroat trout, mountain sucker, Utah chub and mountain whitefish),

Approximately 900 flowering plant species will be blanketing the landscapes and peeking through the forests, including longleaf phlox, blue camas and alpine forget-me-not.

Overnight at THE ALPINE HOUSE. (B, L, D) www.alpinehouse.com

DAY 8~SUNDAY~JULY 22

JACKSON HOLE / DEPART

Your morning is at leisure for last minute exploring, shopping or just relaxing at your lodge. Transfer to the Jackson Hole Airport (or Bozeman if you were only able to obtain tickets roundtrip Bozeman) this afternoon to board your flight home.

(B)





INCLUSIONS

- Superior accommodation at hotels as indicated in the itinerary (or similar).
- All meals as specified in itinerary.
- Services of naturalist guide throughout the tour with 10 or more travelers.
- All Park and admission fees.
- All applicable hotel and lodge taxes and gratuities for baggage handling.
- Complimentary baggage tags and passport wallet.

EXCLUSIONS

- Roundtrip airfare from home city.
- Meals other than those specified and all beverages.
- Excess baggage charges levied by airlines.
- Meals and beverages, other than specified.
- Gratuities to driver, naturalist-guide and other conveyance attendants.
- Laundry and other items of a personal nature.
- Personal and baggage insurance.
- Cost for anything not specifically mentioned in the listing above.
- Optional insurance coverage is available for Baggage, Accident and Trip Cancellation/Interruption at special low cost group rates.

Please Note That The Itinerary Sequence Is Correct At The Time Of Writing,
But Is Subject To Change.

CLASSIC ESCAPES CONSERVATION FUND

In keeping with our mission to provide exciting, educational, and fun-filled experiences that nurture and directly support the diverse wildlife and cultures we visit around the world, Classic Escapes has established the Classic Escapes Conservation Fund to ensure that a percentage of all profits go to support conservation and wildlife researchers performing their critical work in the field. Project support has included environmental education efforts in India and Bhutan, wild dog and cheetah conservation in Botswana, Kenya and Namibia, and global Earth Day education via school internet programs. By traveling with Classic Escapes, you are supporting travel as a tool for building the mutual respect, awareness and understanding that are vital to preserving this planet for future generations.

YOUR JOURNEY AT A GLANCE

INCLUDING: MAMMOTH, TOWER- ROOSEVELT, CANYON, LAKE YELLOWSTONE, GRANT VILLAGE, WEST THUMB & OLD FAITHFUL

SPONSORING ORGANIZATION: EMORY ALUMNI ASSOCIATION

DATES: JULY 15 TO 20, 2012

COSTS:

PER PERSON, BASED ON DOUBLE OCCUPANCY	YELLOWSTONE MAIN PROGRAM BASED ON 15 TRAVELERS	GRAND TETON EXTENSION BASED ON 10 TRAVELERS
LAND ONLY COST - ADULT	\$3,150 PER PERSON	\$1,395 PER PERSON
LAND ONLY COST - CHILDREN RATE BELOW THE AGE OF 12, SHARING WITH PARENTS IN A TRIPLE OR QUADRUPLE ROOM	\$2,195 PER CHILD	\$1,095 PER CHILD
LAND ONLY COST - CHILDREN RATE BELOW THE AGE OF 12, SHARING WITH ONE PARENT IN A DOUBLE ROOM	\$2,795 PER CHILD	\$1,395 PER CHILD
LAND ONLY COST - CHILDREN RATE BETWEEN THE AGES OF 12-18, SHARING WITH PARENTS IN A TRIPLE OR QUADRUPLE ROOM	\$2,695 PER CHILD	\$1,295 PER CHILD
SINGLE ROOM SUPPLEMENT*	\$795 PER PERSON	\$395 PER PERSON

*SINGLE SUPPLEMENT: RATE IS VALID FOR FIRST TWO SINGLE ROOMS BOOKED. IF MORE THAN TWO SINGLE ROOMS, ADDITIONAL SUPPLEMENT WILL APPLY. SINGLES ARE ASSIGNED ON A FIRST COME/FIRST SERVE BASIS.



CONDITIONS OF TRAVEL:

HOW TO BOOK: Fill out the reservation form below and send it to Office of Special Programs, Emory Alumni Association, 815 Houston Mill Road, Atlanta, GA 30322 together with a deposit of \$500 per person for the main and \$100 per person for the extension. On receipt of your signed reservation form and deposit, Classic Escapes will, subject to availability, reserve your place on your tour. When we send off your confirmation invoice, your booking is confirmed and accepted by us. Final payment is due not later than 95 days prior to departure (April 11, 2012). Final documents will be sent to you approximately two weeks prior to departure.

ACCOMMODATIONS: You will marvel at the wonderful accommodations provided throughout your tour. All rooms have private facilities, and all rates are based on double occupancy. Most rooms are twin-bedded, but king-size beds are occasionally available and should be requested in advance. Accommodations listed in this itinerary are correct at time of writing, but on rare occasions can change for similar lodging.

SINGLE SUPPLEMENT: Rate quoted is valid for first two single rooms booked. If more than two single rooms, additional supplement will apply. Singles are assigned on a first come/first serve basis. Single accommodations are not guaranteed, but will be provided at additional cost if available (see reservation form for cost.) The single room supplement pays for privacy, not better accommodations. On occasion, in smaller lodges and camps, you may be required to share with other members of your tour group if single rooms are not available upon check-in. If this is the situation, appropriate per diem refunds are made to passengers in the event they paid for a single room but had to share during any portion of their trip. For passengers who are traveling alone and wish to share a room with another tour member, we will do our best to provide a roommate. However, if this is not possible, you will be required to pay the single room supplement prior to your departure from the USA.

MEALS: All meals as specified in the itinerary.

TRANSFERS: Air transportation from your home city is not included. Arrangements can be made upon request at the lowest supersaver costs available at time of booking or at special group fares if more than 10 passengers request air from Classic Escapes.

TIPS AND TAXES: Gratuities for baggage handling, service charges and taxes imposed by hotels, lodges and camps, and entrance fees to all wildlife reserves as outlined in the itinerary are included. U.S. and foreign airport taxes are included in air costs. Tips to drivers and naturalist local guides are not included and are at the discretion of the tour members. A suggested tipping chart will be forwarded with the final documents.

RATES: All rates quoted are based on tariffs and value of foreign currencies in relation to the U.S. dollar in effect as of June 23, 2011, and are subject to change. Rates are based on a minimum of 15 passengers traveling together. The right is reserved to levy a surcharge if minimum is not met, but that is rarely done. We will do our utmost to keep to the prices as published. Should increases be forced on us by airlines, exchange rates, etc., we reserve the right to surcharge.

TRIP INFORMATION: Upon receipt of your application, instructions will be sent to you concerning all aspects of your trip, such as itinerary, photographic equipment, documents, clothing, insurance, etc.

INVOICING: Final invoicing of your trip will be done approximately three months prior to departure. Final payment is due 95 days prior to departure (April 11, 2012).

FINAL DOCUMENTS: Final documents and tickets will be sent to you approximately two weeks prior to departure. We regret to advise that no documents can be released if final payments are not received.

PAYMENT SCHEDULE: A deposit of \$500 per person for the main trip and \$100 for the extension must be submitted with each application. Deposits may be paid by check or charged to American Express, MasterCard, Visa or Discover. Final payment is payable by check or money order ONLY and is due no later than 95 days prior to departure (April 11, 2012).

CANCELLATIONS: Cancellations are only effective on receipt of written notification. The following per person fees are applicable on this tour:

- Up to 95 days prior to departure, less \$250 handling fee.
- 94-65 days prior to departure: deposit is forfeited.
- 64-45 days prior to departure: 50% of the tour cost.
- Less than 45 days prior to departure, refund is dependent on amount recoverable from overseas suppliers.
- These cancellation fees are also in addition to any imposed by airlines. **WE STRONGLY RECOMMEND THAT YOU OBTAIN THE OPTIONAL INSURANCE POLICY. INFORMATION WILL BE SENT TO YOU UPON RECEIPT OF RESERVATION FORM.**

CHANGE FEES: Once you reserve your tour, changes are possible subject to availability of air or land space at the time of request. Should there be any change fees imposed by airlines or ground operators, or additional costs incurred due to availability of any space, this cost will be invoiced to you.

NOT INCLUDED: Cost of passport and visa fees, and service charges for obtaining visa fees; excess baggage charges levied by airlines; beverages and meals not specified in itinerary; and other conveyance attendants; laundry and other items of a personal nature; gratuities not imposed by hotels and/or restaurants for included services; optional personal, baggage and tour cancellation insurance policy; cost for anything not specifically included in listing above.

RESPONSIBILITY: Neither Classic Escapes (the Company) nor any person or agent acting for, through or on behalf of the Company shall be liable for any loss or damage whatsoever arising from any cause whatsoever and without restricting the generality of the foregoing shall particularly not be responsible for loss or damage arising from any errors or omissions contained in its brochure or other literature, loss or damage caused by delays, sickness, theft, injury or death. In addition the Company shall have the right at any time at its discretion to cancel

any program or the remainder thereof or make any alteration in route, accommodation, price or other details and, in the event of any program being rendered impossible, illegal or inadvisable by weather, strike, war, government or interference or any other cause whatsoever, the extra expenses incurred as a result thereof shall be the responsibility of the passenger. The Company may at its discretion and without liability or cost to itself at any time cancel or terminate the guest's booking and in particular without limiting the generality of the foregoing it shall be entitled to do so in the event of the illness or the illegal or incompatible behavior of the guest, who shall in such circumstances not be entitled to any refund. The person making any booking will, by the making of such booking, warrant that he or she has authority to enter into a contract on behalf of the other person included in such a booking and in the event of the failure of any or all of the other persons so included to make payment, the person making the booking shall by his/her signature thereof assume personal liability for the total price of all bookings made by him/her.

PHOTOGRAPHY: The Company reserves the right without further notice to make use of any photograph or film taken on the journey by our photographers without payment or permission. We guarantee that no photographs of a compromising nature will be used.

CHANGES TO SCHEDULES: Although every effort is made to adhere to schedules it should be borne in mind that the Company reserves the right and in fact is obliged to occasionally change routes and hotels on tour as dictated by changing conditions.

REFUNDS: While the Company uses its best endeavors to ensure that all anticipated accommodation is available as planned, there shall be no claim of any nature whatsoever against the Company for a refund either in the whole or part, if any accommodation or excursion is unavailable and a reasonable alternative is not found. If the guest is unable to use any service provided in the itinerary, then there are no refunds due.

CONSENT: The payment of the deposit OR any other partial payment for a reservation on a tour constitutes consent by all guests covered by that payment to all provisions of the conditions and general information contained in this brochure whether the guest has signed the booking form or not. The terms, under which you agree to take this tour, cannot be changed or amended except in writing signed by an authorized director of the Company.

To enjoy your **Emory Alumni Association** experience, participants must be in good physical and mental health, and be able to keep up with the pace of the group. Program participants requiring extraordinary assistance must be accompanied by someone who can and will provide all required assistance. To help you choose the trip best suited for you and to ensure the smooth and efficient operation of our trip, we describe this trip as: **Moderately Active:** Involves long distances and/or extensive movement, walking, and/or stair-climbing.



RESERVATION FORM:

EMORY ALUMNI ASSOCIATION ~ Yellowstone National Park

12NAL0715/EMORY

Enclosed is my deposit for \$ _____ (\$500 per person, plus \$100 for the extension) to hold _____ place(s) on the journey to the Yellowstone national park departing on July 15, 2012. Cost is \$3,150 per person, double occupancy, land only. See "Your Journey At A Glance Page for children's rates.

Final payment due date is: April 11, 2012

Please make check payable to CLASSIC ESCAPES OR Charge deposit to: MasterCard Visa American Express Discover (Attached Credit Card Authorization form needs to be completed and returned to the Emory Alumni Association office via mail)

Deposits can be made by credit card; however, all final payments are required to be made by check or money order only.

1) NAME (As appears on passport): Mr. Mrs. Ms. _____

2) NAME (As appears on passport): Mr. Mrs. Ms. _____

NAME FOR NAME BADGE IF DIFFERENT FROM ABOVE: 1) _____ 2) _____

STREET ADDRESS: _____

CITY: _____ STATE: _____ ZIP: _____

PHONES: HOME: () _____ OFFICE: () _____ MOBILE: () _____

E-MAIL ADDRESS: _____ FAX: () _____

- I certify that I have not recently been treated for, nor am I aware of any physical or other condition or liability that would create a hazard to myself or the other members of this tour.
- The two of us above are sharing a room and, where possible, would like a room with: ONE TWO Beds (Make one selection only)
- I am sharing with _____ (form sent separately)
- I need assistance in securing a roommate. I understand if EMORY ALUMNI ASSOCIATION or the tour operator cannot locate one for me by final payment date, I agree to pay the additional single supplement amount. I prefer to share with: Smoker Non-smoker
- I/We wish to participate in the optional post extension at an additional per person cost of:
 \$1,395 per adult person for the Grand Teton post extension
- I desire single accommodations, if available, and will pay the single supplement additional cost of:
 \$795 for the main trip \$395 for the post-extension

All rates quoted are based on tariffs and value of foreign currencies in relation to the U.S. dollar in effect as of June 23, 2011, and are subject to change. Refund of deposit is made if cancellation is received in writing up to 95 days prior to departure, less \$250 per person handling fee. Thereafter, refund is made less any cancellation charges levied in accordance with the policy outlined in the accompanying Conditions of Travel. **WE STRONGLY RECOMMEND THAT YOU OBTAIN TRAVEL INSURANCE. RESERVATIONS ARE ACCEPTED SUBJECT TO TOUR CONDITIONS AND WILL BE CONFIRMED ONLY IF ACCOMPANIED BY COMPLETED FORM SIGNED BY THE TOUR PARTICIPANT(S).**

SIGNATURE: _____ DATE: _____

SIGNATURE: _____ DATE: _____

EMORY ALUMNI ASSOCIATION
815 Houston Mill Road
Atlanta, GA 30322
Phone: 404-727-6479 Fax: 404-727-2557

(We recommend that you keep a copy of your selections as noted above for your future reference)



CREDIT CARD PAYMENT AUTHORIZATION

Please Note: If you wish to charge your deposit to Visa, MasterCard, American Express or Discover, this authorization form MUST be completed and returned to us along with your reservation form before we can process your application.

I authorize (Classic Escapes Inc.) to charge my VISA/MASTERCARD listed below:

Name appearing on credit card _____

Card number _____ Expiration date _____

Card Verification Number* _____ Card Type _____

Billing address of credit card _____

Amount of transaction _____ Invoice # _____

Services rendered/Items purchased _____

Phone number _____

Signature _____ Date _____

***How To Locate Your Card Verification Number:**

(Visa, MasterCard: Locate the credit card number on the back of the card above the signature box. Enter the 3 digit number which follows the credit card number.

I understand that all rates quoted on this tour I'm making a payment on are based on tariffs and value of foreign currencies in relation to the U.S. dollar in effect as of June 23, 2011, and are subject to change. Refund of deposit is made if cancellation is received in writing up to 95 days prior to departure (April 11, 2012), less \$250 per person handling fee. Thereafter, refund is made less any cancellation charges levied, based on the following schedule:

- Up to 95 days prior to departure, less \$250 handling fee.
- 94-65 days prior to departure: deposit is forfeited.
- 64-45 days prior to departure: 50% of the tour cost.
- Less than 45 days prior to departure, refund is dependent on amount recoverable from overseas suppliers.
- These cancellation fees are also in addition to any imposed by airlines.

PLEASE NOTE: At times, our bank requires photocopy of credit card (both sides) and driver's license or document showing signature of cardholder, in order to process the charge. While it is not required at this time that you include these materials with your deposit, if our bank requests it, we will contact you for these