



58-25 Queens Blvd., Woodside NY 11377

T: (718) 204-7077; (800) 627-1244

F: (718) 204-4726

E: info@classicescapes.com

W: www.classicescapes.com

Nature & Cultural Journeys
for the Discerning Traveler

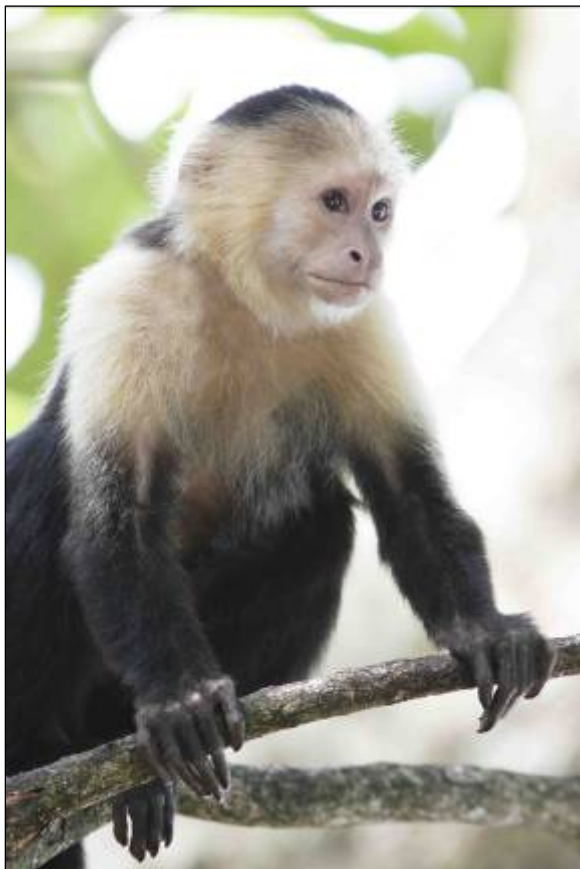
LINCOLN CHILDREN'S ZOO

CORDIALLY INVITES YOU

ON A CLASSIC ADVENTURE TO

COSTA RICA

MARCH 21 TO 29, 2012



OVERVIEW OF COSTA RICA

With its abundance of forests, concern for conservation and truly astonishing wildlife, Costa Rica is well-worth an extended stay. It is one of the top destinations in the world for people interested in birds and nature, and this tour is an excellent introduction. Incredible orchids will add vivid splashes of color to the rainforests, and the mammal species are exciting too – sloths, monkeys, and the elusive cats that are so difficult to spot.

YOUR ITINERARY

DAY 1~WEDNESDAY~MARCH 21 LINCOLN/EN ROUTE/SAN JOSE



Your journey begins as you board your flight in Lincoln. Upon arrival, you will be escorted to your accommodation, the Bougainvillea, where your evening is at leisure. Set among ten acres of lush gardens, the unique and comfortable Hotel Bougainvillea, located at the outskirts of a pleasant residential area in San Jose, provides a quiet hideaway where guests can truly experience the world famous natural beauty of Costa Rica. The grounds of the hotel are spectacular – being surrounded by coffee plantations, citrus orchards and lush gardens provides an enticing setting for jogging through the winding trails, tennis, or relaxing by the swimming pool. Each of the 83 rooms has twin double beds, tub or shower, and a separate seating area. The furniture is especially made of Costa Rican hardwoods, and all rooms have cable television and direct dial telephones. In addition, each room has a balcony offering marvelous views of the mountains on one side and the San José skyline on the other.

Overnight at HOTEL BOUGAINVILLEA. (Meals Aloft) www.hb.co.cr/

DAYS 2/3~THURSDAY/FRIDAY~MARCH 22/23 BRAULIO CARRILLO NATIONAL PARK/TORTUGUERO NATIONAL PARK

This morning, after breakfast, board your vehicle for a drive to the Rainforest Aerial Tram and begin your trip into the treetops to experience nature and view the forest from a bird's-eye perspective. The tram is situated in a 1,000-acre private reserve of virgin tropical forest that borders the Braulio Carrillo National Park. Your tour starts with a 15-minute video, followed by a 90-minute tram ride. You access the canopy as you glide along the 1.6 mile circuit in six-passenger gondolas. Your incredible views are enhanced by the quiet, allowing you to listen to the various sounds of the rainforest. The canopy is home to an enormous amount of flora and fauna and in their eagerness to search for light and space many plants have colonized the tree tops turning them into "small ecosystems" – these plants are known as epiphytes. Orchids, "bromeliads", different types of moss, ferns, lianas and the bejucos, are just some of the species which make up the canopy. The fauna is also very abundant, however it is much harder to observe. Ever present are many



types of butterflies and some 350 species of birds have been reported here, such as the Solitary Eagle, Ornate Hawk-eagle, Rufous-vented Ground-cuckoo, Common Potoo, Lanceolated Monklet, Yellow-eared Toucanet, Bare-necked Umbrellabird, and Rufous-winged Tanager. Reptiles like snakes and lizards as well as amphibian species such as "tree frogs" can also be found, as well as mammals – three monkey species, two types of sloths, two kinds of anteater bears and a great number of bat species. From the Aerial Tram you can also appreciate all the different shades of green as well as the



various sizes and shapes that the leaves have created as a strategy to capture sunlight.

Resume your drive through banana plantations to a jetty where you board your speedboat for your ride to Tortuguero, which consists of a vast alluvial floodplain. Tortuguero's tropical moist to wet forest is accessible only by small plane or boat, along the famous Tortuguero Canals. This system of rivers and man-made channels parallels the coast and cuts through beautiful primary forest. One of the wettest regions in the country, it is also one of the areas with the greatest biological diversity. There are 11 distinct habitats, ranging from littoral woodland and berm, to very moist high forest and swamp forest where the predominant species can grow up to 130 feet tall such as wild tamarind. The water hyacinths are so thick in places that boats cannot get through. The wildlife is rich and varied with unusually large populations of monkeys, anurans (60 species), birds (309 species) and fish. Some of the resident mammals are the elusive tapir which feeds mainly on plants and seeds, jaguar (rarely seen), ocelot, kinkajou, collared and white-lipped peccary, Neotropical river otter, tayra, olingo, three-toed sloth, spider monkey and howler monkey. A fascinating mammal that lives in the swamps is the fishing bulldog bat which is one of the largest bats in the country. Three unusual anurans live in this wilderness – the smoky frog which abounds on the banks of streams, the glass frog which has such transparent skin that its internal organs can be seen underneath, and the poison dart frog

which is dangerous to the touch. Resident avian species include the Green Macaw which prefers to move about in the upper canopy of the rain forests and mainly feeds on seeds of the wild almond tree, Great Curassow, Keel-billed Toucan, Turkey Vulture, White-necked Jacobin, Violaceous Trogon, Great Tinamou which is a very terrestrial bird that feeds on seeds, berries and small insects caught in its flight path, Neotropical Cormorant, Anhinga, and Montezuma Oropendula. The channels and marshes are home to seven species of land turtles which can be seen sunning themselves on logs in the middle of the water or on islands of floating vegetation. Here, too, you can find the West Indian manatee – one of the most endangered Caribbean species – crocodiles, caimans, and green iguanas. There's also a great variety of crustaceans and about 30 species of freshwater fish, including the gar – considered to be a living fossil and amazing when spawning, eel, bull shark, Caribbean snook, tarpon, red snapper and mackerel.

Renowned naturalist Archie Carr and author of the 1956 Book *The Windward Road* did much of his work on sea turtles at Tortuguero and was instrumental in establishing the Caribbean Conservation Corporation (CCC) – his "Casa Verde" research station is still here. In fact, Tortuguero gets its name from the Spanish word for turtle and is the most important nesting site in the entire western half of the Caribbean for the green turtle – which gathers in large numbers to nest between July and October. Other species of sea turtles that also nest on the wide beaches of the park and refuge are the leatherback and hawksbill. The green turtle population is believed to have come perilously close to extinction in the 1960s when nearly every female turtle arriving to nest in Tortuguero was taken for the export market for turtle soup. CCC was established in 1959 specifically to study and protect Caribbean green turtles. Working closely with the Costa Rican government, CCC helped establish Tortuguero National Park in 1970, a move that offered protection to the turtles and strictly limited the number of turtles that could be taken.

The Evergreen Lodge, your accommodation for the next two nights, is ideally situated within Tortuguero National Park, the perfect place from which to explore this unique and magical area. One of the canals runs right in front of the lodge and all around you the towering trees and vegetation that adorn the surroundings combine to create a truly beautiful setting. Evergreen offers lodging in 16 lovely bungalows all equipped with en-suite facilities. Because of their design you can virtually do all of your birding without having to leave the comfort of your bed. The bungalow is almost completely surrounded by windows enabling you to be one with the surrounding jungle and wildlife.

Overnights at the EVERGREEN JUNGLE LODGE. (B, L, D Daily)

DAYS 4/5~SATURDAY/SUNDAY~MARCH 24/25

ARENAL VOLCANO



Your drive now takes you to Arenal, which is located in the northern region of Costa Rica. The landscapes as you drive along the twisting roads make for incredible photographs, so make sure you have your cameras handy. Costa Rica has so much to offer and no exploration of this amazing diversity would be complete without a visit to the Arenal Volcano, rising to approximately 5,357 feet at its summit, although the exact summit height changes frequently due to the volcanic activity. In 1968, after having lain dormant for more than 400 years, Arenal Volcano erupted with extreme violence and fury. Since that time, it has maintained nearly constant activity that ranges from soundless explosions with large mushroom-shaped clouds of ash overhead, to booming explosions that send hot rocks nearly a mile into the air. Perfect classic cone shape and world class hot springs make this scene a must.

Your second afternoon will be spent at the nearby Tabacon Hot Springs Spa & Resort. You will be transported to a higher level of energy, which makes Tabacon a one-of-a-kind place. From the heart of the volcano, spring fountains of thermo mineral water which form the Tabacon River, running at a soothing 102°F, form cascades, waterfalls, and natural pools through exotic tropical gardens, and flow into pools, to guarantee an unforgettable sensation. The resort features mineral water pools, indoor Jacuzzi, therapeutic massages and mud treatments (at an extra cost), restaurant with international and Costa Rican cuisine, tropical bars, souvenir shop, lockers, changing rooms, and showers. You may want to indulge yourself with a massage, a swim in the hot springs, or any other of the facilities offered before your included dinner here.

The Arenal Observatory Lodge is located just over one mile from the active crater of Arenal Volcano, and is separated from it by a deep river valley. The location was specifically chosen by scientists from the Smithsonian Institute who needed a close but safe vantage point from which to study the volcano. Rich volcanic soil supports primary and secondary rainforest while waterfalls and crystalline rivers offer sparkling jungle refreshment. A well marked and manicured trail system traverses the property and provides easy access to the breathtaking natural beauty. At the Arenal



Observatory Lodge, you can enjoy the sound and fury of Arenal Volcano's constant eruptions from the comfort of your

room, or from one of the many perfect volcano viewing sites around the lodge. Accommodation is in thirty spacious rooms. The Smithsonian rooms, where you will be staying, are housed in a modern building located about 120 yards from the main lodge, reached via a 134-foot suspension bridge through a small patch of rain forest. These rooms contain huge walls of glass that provide premier views of the volcano from the comfort of your bed, or from the two sitting chairs strategically placed for your enjoyment. The rooms have varnished wood floors, private bathrooms, and one queen- and one full-sized bed. The Smithsonian also features a viewing deck, a conference room and its own volcano museum, with an active seismograph constantly monitoring the volcanic and seismic activity just outside your door.



Everywhere one feels the volcano's commanding presence. The gardens and landscaping are extravagant with color. Natural flowering plants and shrubs were carefully chosen to attract

wildlife. Jewel-toned hummingbirds dart from heliconia to oleander and brilliant butterflies adorn the blooms. Other attractions include a waterfall, just a short hike away, which cascades into the cool forest depths. A well maintained path leads guests to this magical spot. The mysterious emerald lagoon at Cerro Chato Volcano fills the now extinct crater. A challenging hike from the lodge takes guests through primary forest to a waiting canoe for a dreamy paddle on the lake's mirror surface. Birders will be particularly gratified during their visit. The diverse habitats surrounding the lodge shelter nearly 370 species. Guests can see birds everywhere.

A host of activities await you here, should you choose to partake. Engage in mountain biking, whitewater rafting, kayaking, hanging bridges, butterfly gardens, canopy tours, fishing, horseback riding and more are all available. But, one needn't travel far to feel nature's magic. It's all around you.

Overnights at the ARENAL OBSERVATORY LODGE. (B, L; B, D)

DAYS 6/7~MONDAY/TUESDAY~MARCH 26/27 MONTEVERDE CLOUD FOREST

Continue to Monteverde, one of the most beautiful cloud forests in the world. This afternoon, prepare yourself for a very unique experience, the Selvatura Treetop Walk on hanging bridges. You will be surprised to find yourself - like the birds - admiring Mother Nature from the top of the trees. This is because from the beginning of your walk you will be ascending - step-by-step - until you find yourself as high up as the vegetation that will surround you (from 150 to 510 feet). Here, a series of eight bridges await you in order to safely walk without any worries. The almost 2-mile walk is an unforgettable experience, the excitement of looking to one side and seeing the tops of the trees and at the same time feeling the sensation of walking among the clouds.



Your second day here is spent exploring the Monteverde community and the private Cloud Forest Reserve with your naturalist-guide. Monteverde is a rich and complex cloud forest reserve which protects six different ecological communities, making it a paradise for nature enthusiasts and a renowned field site for biological research. Note that a "cloud forest" differs from a "rain forest". In particular, a cloud forest will generally receive less rain on an annual basis than will a rain forest. However, a cloud forest generally has more humidity and (because of its higher altitudes) more cloudiness than a rain forest. The reserve encompasses about 10,000 acres, with many interesting trails to wander

through the thick tropical vegetation. You'll recognize many familiar house plants growing freely in the wild, including



schefflera, bromeliads, and ferns, as well as some more exotic species. Although it's difficult to spot them, more than 320 species of birds are resident, including the seasonal Resplendent Quetzal, considered the most beautiful bird in the Americas, as well as the Three-wattled Bellbird, Black Guan, Umbrellabird, Spangled-cheeked Tanager, Orange-bellied Trogon, Emerald Toucanet (you usually hear them more than see them), and numerous other specialties. Among the 100 species of mammals are the Baird's tapir, jaguar and ocelot (all rarely seen), howler monkey, kinkajou, and prehensile-tailed porcupine.

For the adventurous at heart there is an optional (extra cost) exhilarating excursion available at the Sky Trek, a system of trails,

suspension bridges, and zip lines that offers visitors the opportunity to observe and appreciate tropical vegetation from different vantage points. Sky Trek Costa Rica offers a total stretch of over a mile of cables. The system is integrated with a gorgeous Cloud Forest trail, 1 ½ miles long. Enjoy a different perspective of the Monteverde Cloud Forest that not many people have a chance to see – as most of the wildlife found in the Cloud Forest is living or feeding in the tree tops.

Along with the 11 cables zipping through the canopy forest, two suspended bridges 160 feet off the ground, and some of the most beautiful trails in the Cloud Forest, take advantage of the Sky Trek's observation tower that is 70 feet off the ground, where on clear days you can see the Arenal Volcano. This view reveals lush green gardens of mosses, ferns, flowers, and epiphytes growing on every tree. Sky Trek is the perfect blend of nature and adventure as you fly over this magnificent jungle.



Your lodging will be at the Fonda Vela Hotel, located on a 35-acre property, full of lush forests and verdant pastures that are excellent for birding and hiking. In this tranquil setting, you may see parrots and emerald toucans that come to feed in the fruiting trees, occasionally. During certain months, the Fonda Vela is excellent for seeing Resplendent Quetzal, Three-wattled Bellbird and Keel-billed Toucans. Horses graze in the pasture below. The Fonda Vela Hotel has nine buildings nestled in the landscaped property, designed with natural lighting, privacy and warmth. All have large windows with views of the forest allowing the outside beauty to be a part of a cozy interior. Their 20 junior suites, where you will be accommodated, have a small refrigerator, table, king and queen-size beds, a comfortable sofa and telephones.

Overnights at the FONDA VELA. (B Daily) www.fondavela.com/

DAY 8~WEDNESDAY~MARCH 28

SARCHI/SAN JOSE

This morning after breakfast, drive back to San Jose. En route, stop for lunch at Jaco, a small community on the Central Pacific Costa Rica coast. Upon arrival in San Jose, you will check in at the Bougainvillea where the remainder of the day is at leisure. Tonight, enjoy a farewell dinner at your hotel.

Overnight at HOTEL BOUGAINVILLEA. (B,L,D)

DAY 9~THURSDAY~MARCH 29

SAN JOSE/MIAMI/CHICAGO/LINCOLN

Time to return to the USA, as you will be transferred this morning to the airport for your return flight home. Sadly it is now time to say "adios" to hospitable Costa Rica. (B)

OPTIONAL POST-EXTENSION TO CARARA BIOLOGICAL RESERVE & CENTRAL PACIFIC COAST, DOMINICAL

DAY 8~WEDNESDAY~MARCH 28

CARARA BIOLOGICAL RESERVE~CENTRAL PACIFIC COAST, DOMINICAL

Bid farewell to the rest of the group returning to San Jose and to the USA, and drive through the scenic countryside to yet another exciting destination, Central Pacific Coast, Dominical.

En route, enjoy lunch and explore the Carara Biological Reserve, a living laboratory for scientists and nature enthusiasts alike and among the areas of the greatest biodiversity in the country. Despite its relatively small size, Carara houses several ecosystems, such as marshland, a lagoon, and gallery, secondary and primary forests. The lush green vegetation of the reserve contrasts vividly with the dry, barren hills that surround it from which crystal-clear rivers flow. One of these is the Cara River, which gave the park its name. During the rainy season, the Tarcoles floods its banks, creating a large lagoon that



quickly fills with water hyacinth and other floating plants. Crocodiles and caimans are easily spotted along with plenty of wading birds – Roseate Spoonbills, Anhingas, Jacanas, Pied-billed Grebes, and Bare-throated Tiger-Heron. In the forest refuge, visitors can appreciate the beauty of a rare mix of varied tropical vegetation. Coatimundis, peccaries, white-face capuchin, howler and spider monkeys, and the rare-two toed sloth can all be found here along with a great variety of plant life including fabulous heliconias. Carara is one of the few nesting areas remaining for the Scarlet Macaw. Throughout the day, the macaws can always be heard and often seen in flight, particularly around dusk. There are two paths in the reserve, one starts at the main entrance and takes a short circular route; the other begins a mile or so away and passes the lagoon. As you hike along the trails in Carara, the birdsong and sounds of the jungle give it an air of adventure.



Your accommodation for the next three nights, Cuna del Angel (Cradle of Angel) is a beautiful, exclusive and cozy boutique hotel located between Dominical and Ballena National Park, at the South Pacific coast, on the province of Puntarenas. Cuna del Angel is a combination of Colonial and Native Costa Rican style where the best of both worlds meet, keeping the glamour and elegance of a modern and civilized world, and evoking the spiritual world of the indigenous cultures that inhabited the area. The hotel features 23 rooms, all named after an Angel. The 16 Angel deluxe rooms, with balconies or covered terraces, are facing the infinity edge swimming pool and have astonishing forest and ocean views. The seven Jungle standard superior rooms are located in the middle of the tropical forest where local wildlife can be easily spotted. All rooms are equipped with modern amenities. Overnight at the CUNA DEL ANGEL HOTEL. (B, L)



DAY 9~THURSDAY~MARCH 29

CANO ISLAND

Today enjoy a boat trip to Caño Island, one of the best spots in Costa Rica for scuba diving and snorkeling because of its outstanding underwater visibility (*about 65 feet*). After snorkeling in the crystal clear ocean waters around the island, a light lunch awaits you at the beach. A knowledgeable guide will lead you through a mysterious trail to an ancient cemetery, and will then narrate and explain one of the truly fascinating artifacts left by an ancient Indian culture. Believed to be the burial ground of the Diquis Indian's ruling elite, Cano Island features pre-Columbian stone spheres whose purpose is still shrouded in mystery. To peak one's curiosity further, the island inexplicably receives more lightning strikes than nearly any other place on earth.



Caño Island is a biological reserve and because of its unique flora and fauna the marine life is highly protected. The island itself is covered with tropical rain forest consisting of approximately 158 different species of plants, among which giant trees grow over 150 feet tall. White sand beaches and an exotic inshore coral reef bursting with color surround the island. Its greatest appeal however, is found beneath its turquoise waters. Cano Island's marine reserve is nothing short of spectacular with such a diverse ecosystem, including parrotfish, puffers, damsels, even Olive Ridley turtles. The most common sighting on the excursion is the Pan Tropical spotted dolphin. There are smaller groups close to shore and an incredible pod offshore which sometimes number over 1,000. Bottlenose dolphins are also commonly seen and will certainly make you smile as they love to ride the bow of the boat and jump into the air. The rough tooth dolphins are a favorite as they look different than other dolphins, almost reptilian. You can also encounter the incredible Costa Rican spinner dolphin and common dolphins.



At any time you can encounter whales. Orcas have been encountered both right by the shore and many miles offshore. The same goes with the sei whales, pilot whales, Bryde's whales and pseudorca. The beaked whales are usually seen at least 20 miles offshore. Often you can encounter Humpback Whales, almost year around. The humpbacks are most abundant from late July to November when the southern Humpbacks arrive and are also plentiful from December through March when the northern humpbacks are here to breed and give birth. Of course there is no way to guarantee encounters with dolphins and whales but over 95% of the time there are good sightings. Often the dolphins engage in play with the boat and when they show interest you can get into the water using snorkeling gear for an incredible up close

encounter.

Overnight at the CUNA DEL ANGEL HOTEL. (B, L)

DAY 10~FRIDAY~MARCH 30

DAY AT LEISURE

Your day is yours to spend at leisure, relaxing at your lovely hotel. The hotel offers its visitors many activities (*at an additional cost*) to enjoy the beautiful pacific coast including sport fishing (the hotel has its own fully equipped boat), surfing, biking, swimming, scaling, hiking, canopying, wildlife observing and bird watching. The hotel can also organize horseback riding and diving excursions. The hotel features a relaxing Spa that offers its guests a wide range of beauty and wellness treatments.

Overnight at the CUNA DEL ANGEL HOTEL. (B)

DAY 11~SATURDAY~MARCH 31

MANUEL ANTONIO NATIONAL PARK/BOTANICAL ORCHID GARDEN/SAN JOSE

Start your drive back to San Jose and en route visit another Costa Rican national treasure – Manuel Antonio National Park, just south of Quepos on the Pacific Coast, where you also enjoy lunch. The Park's two white sandy beaches, Espadilla Sur and Manuel Antonio, stand out as its main attractions. Just off shore are twelve islands, most of them without vegetation, but excellent seabird sanctuaries nonetheless. Punta Cathedral was an island at one time, an accumulation of the sediments joined to the land with a sandy belt named Tomolo, a prized nesting site for the brown booby. You may see dolphins here, and once in a while a pod of migratory whales. There are more than 100 mammal and 180 bird species found here. Iguanas are everywhere, and squirrel monkeys (an endangered species) play in the trees above the trails in the Park. In addition, you may see two-toed sloths, raccoons, white-nosed coatis, howler and white-faced capuchin monkeys, and squirrels. With its' stunning, picture-postcard backdrop, and miles of white sandy beaches it's easy to see why Manuel Antonio National Park is Costa Rica's most popular.



After lunch visit the Botanical Orchid Garden where you will have the opportunity to see many unusual and colorful species of cattleyas, ladyslippers (Phragmepidium), moth orchids (Phaelonopsis) oncidiums, stanhopeas as well as the tiny looking "dwarf orchids". Continue to San Jose, where upon arrival you will check in at the Bougainvillea where the remainder of the day is at leisure.

Overnight at HOTEL BOUGAINVILLEA. (B, L, D)

DAY 12~SUNDAY~APRIL 1

SAN JOSE/MIAMI/CHICAGO/LINCOLN

Time to return to the USA, as you will be transferred this morning to the airport for your return flights home. Sadly it is now time to say "adios" to hospitable Costa Rica. (Meals Aloft)



INCLUSIONS

- All ground transfers in air-conditioned motorcoach.
- Superior accommodations throughout as indicated or similar.
- Services of naturalist throughout the tour.
- Lincoln Children's Zoo escort will accompany the group with a minimum of 10 travelers on both the main tour and the extension.
- All meals as indicated in the itinerary.
- All park entry fees.
- All applicable hotel and lodge taxes and gratuities.
- Complimentary baggage tags and passport wallet.

EXCLUSIONS

- Roundtrip air transportation from Lincoln to San Jose.
- U.S. and foreign airport taxes.
- Passport. No visa is required for Costa Rica.
- Excess baggage charges levied by airlines.
- Meals and beverages, other than specified.
- Gratuities to driver, naturalist-guide and other conveyance attendants.
- Laundry and other items of a personal nature.
- Personal and baggage insurance.
- Cost for anything not specifically mentioned in the listing above.
- Optional insurance coverage is available for Baggage, Accident and Trip Cancellation/Interruption at special low cost group rates.

Please Note That The Itinerary Sequence Is Correct At The Time Of Writing,
But Is Subject To Change.

CLASSIC ESCAPES CONSERVATION FUND

In keeping with our mission to provide exciting, educational, and fun-filled experiences that nurture and directly support the diverse wildlife and cultures we visit around the world, Classic Escapes has established the Classic Escapes Conservation Fund to ensure that a percentage of all profits go to support conservation and wildlife researchers performing their critical work in the field. Project support has included environmental education efforts in India and Bhutan, wild dog and cheetah conservation in Botswana, Kenya and Namibia, and global Earth Day education via school internet programs. By traveling with Classic Escapes, you are supporting travel as a tool for building the mutual respect, awareness and understanding that are vital to preserving this planet for future generations.

THINGS YOU NEED TO KNOW ABOUT COSTA RICA

Participants:

- Must be able to climb in and out of, as well as move around in confined quarters within minibuses and motor coaches unassisted. People need to be willing to rotate seats.
- Must be able to tolerate nature walks at an easy pace on uneven terrain, sometimes uphill, for three or four hours at a time in heat and humidity.
- Must be able to tolerate riding on uncomfortably uneven, bumpy and winding roads for long periods of time (6 hours maximum)
- Should generally be in good health and prepared to travel in locations without medical facilities.

In general, this trip requires:

- Flexibility and good humor – unexpected changes and/or glitches will occur. True adventure in travel can sometimes be accompanied by unexpected changes in conditions, itineraries and occasionally your accommodations.
- A spirit of adventure, curiosity and flexibility
- Interest in and willingness to appreciate a destination with overall good infrastructure but with at times rustic accommodations and adventure activities. That being said, some locations are nestled in absolute luxury where pampering is the norm.

Air Schedules

Choosing the best possible air arrangements for our travelers is always a challenge. We work with many airlines that offer the best level of service, routings and value for our programs. While there may indeed be more direct routings available with another airline, the cost of these flights may not be within the budget that allows us to give you the best value possible. If you prefer to purchase your own international air, please feel free to choose the “land only” rate for this program. **The start and end city for this program is San Jose, Costa Rica.**

Upon registration, you must provide your full legal name as it appears on your passport. In the event an airline ticket is issued with incorrect information you have provided, you will be responsible for charges associated with reissuing the ticket.



Schedules, accommodations and prices are accurate at the time of writing. They are subject to change.



YOUR JOURNEY AT A GLANCE

INCLUDING: SAN JOSE, AERIAL TRAM, TORTUGUERO NATIONAL PARK, ARENAL VOLCANO & MONTEVERDE CLOUD FOREST

SPONSORING ORGANIZATION: THE LINCOLN CHILDREN'S ZOO

ESCORTED BY: A HOST FROM THE LINCOLN CHILDREN'S ZOO

DATES: MARCH 21 TO 29, 2012

COSTS:

PER PERSON, DOUBLE OCCUPANCY	MAIN PROGRAM	CENTRAL PACIFIC POST EXTENSION
LAND ONLY	\$2,595 PER PERSON	\$1,095 PER PERSON
ECONOMY AIR FROM LINCOLN	\$1,250 PER PERSON	N/A
PLUS, ESTIMATED DEPARTURE TAXES AND/OR FUEL SURCHARGES (CURRENTLY, SUBJECT TO CHANGE)	\$201 PER PERSON	N/A
SINGLE ROOM SUPPLEMENT	\$595 PER PERSON	\$395 PER PERSON

**SINGLE SUPPLEMENT: RATE IS VALID FOR FIRST TWO SINGLE ROOMS BOOKED. IF MORE THAN TWO SINGLE ROOMS, ADDITIONAL SUPPLEMENT WILL APPLY. SINGLES ARE ASSIGNED ON A FIRST COME/FIRST SERVE BASIS.*

***ALL INTERNATIONAL AIRFARES ARE SUBJECT TO CHANGE AND BASED ON MINIMUM NUMBER OF TRAVELERS. TAXES ARE SUBJECT TO CHANGE UNTIL TICKETED.*

DEPARTURE CITY: LINCOLN

(DEPARTURES FROM OTHER CITIES ARE POSSIBLE AT EXTRA COST)



CONDITIONS OF TRAVEL:

HOW TO BOOK: Fill out the reservation form below and send it to Classic Escapes Inc., 58-25 Queens Blvd., Woodside, NY 11377, together with a deposit of \$500 per person, plus \$100 for the extension, as well as your insurance payment if you wish to take advantage of the pre-existing medical condition exclusion. On receipt of your signed reservation form and deposit, Classic Escapes will, subject to availability, reserve your place on your tour. When we send off your confirmation invoice, your booking is confirmed and accepted by us. Final payment is due not later than 75 days prior to departure (January 6, 2012). Final documents will be sent to you approximately two weeks prior to departure.

AIR TRANSPORTATION: Roundtrip economy-class jet transportation from LINCOLN via AMERICAN AIRLINES and/or other IATAN carriers. Rates based on special promotional fares and cancellation fees apply once tickets are issued. Departures from other cities in the USA are possible at additional cost. Kindly inquire at the time of reservation. Rates based on special promotional fares and cancellation fees apply once tickets are issued. Departures from other cities in the USA are possible at additional cost. Kindly inquire at the time of reservation. Please note that these promotional fares are subject to 10 passengers traveling together on the same airline routing and itinerary. If this minimum is not met, the special group rates are not applicable and it might become necessary to issue instant purchase tickets earlier than when final payment is due in order to take advantage of airfares that are similar to the group rates. Should this occur, you will be contacted with the details.

DEPARTURE TAXES: Please note the amount of departure tax reflected on the Reservation Form is subject to change, at the discretion of governments and airlines, and with no advance notice. Should this occur, you will be invoiced prior to departure for any additional taxes imposed.

AIRLINE SEATING: For American Airlines, we request seats together for the group. All planes are non-smoking. We can request a seating preference on your behalf, however this is only a request and not guaranteed. Requests should be made in writing no later than 60 days prior to departure. Bulkhead and/or emergency row seats can only be requested at airport check-in on the day of departure. Boarding passes will only be issued at the airport on the day of departure. You may inquire during check-in to have a seating change made, however this change is based on availability and is at the sole discretion of airport staff.

FREQUENT FLYER MILEAGE: At time of publication, American Airlines is a partner with British Airways, Cathay Pacific, Finnair, Iberia, Japan Airlines, LAN Ecuador, LAN Argentina, LAN Peru, LAN Express, Malev Hungarian Airlines, Qantas Airways and Royal Jordanian Airlines, Aer Lingus, Air Pacific, Air Sahara, Air Tahiti Nui, Alaska Airlines/Horizon Air, Brussels airlines, El Al, Gulf Air, Hawaiian Airlines, Mexicana, TAM and Turkish Airlines. You may obtain frequent flyer mileage on any of these carriers. Present your frequent flyer card for all flight check-ins and keep the boarding passes until you receive a statement with the mileage credit.

BAGGAGE: International flights from the U.S. allow two pieces of checked luggage, each not exceeding 50 lbs. However we recommend you travel as light as you can manage, as it is more comfortable for you. Also, the size and the structure of the bag is limited. Soft duffel bags are ideal as they stow best in vehicles. **Please note that your airline may implement a fee at the time of check-in to check one or more bags. WE HIGHLY RECOMMEND THAT YOU OBTAIN THE OPTIONAL INSURANCE POLICY.**

ACCOMMODATIONS: You will marvel at the wonderful accommodations provided throughout your tour. All rooms have private facilities, and all rates are based on double occupancy. Most rooms are twin-bedded, but king-size beds are occasionally available and should be requested in advance. Accommodations listed in this itinerary are correct at time of writing, but on rare occasions can change for similar lodging.

SINGLE ROOM SUPPLEMENT: Rate quoted is valid for first two single rooms booked. If more than two single rooms, additional supplement will apply. Singles are assigned on a first come/first serve basis. Single accommodations are not guaranteed, but will be provided at additional cost if available (see reservation form for cost.) The single room supplement pays for privacy, not better accommodations. On occasion, in smaller hotels, you may be required to share with other members of your tour group if single rooms/cabins are not available upon check-in. If this is the situation, appropriate per diem refunds are made to passengers in the event they paid for a single room but had to share during any portion of their trip. For passengers who are traveling alone and wish to share a room with another tour member, we will do our best to provide a roommate. However, if this is not possible, you will be required to pay the single room supplement prior to your departure from the USA.

MEALS: American breakfast daily. All other meals as specified on the itinerary.

TRANSFERS: Roundtrip transfer of passengers between airport and hotels are included in the tour.

TIPS AND TAXES: Gratuities for baggage handling, service charges and taxes imposed by hotels and lodges, and entrance fees to all parks and sightseeing venues as outlined in the itinerary are included. U.S. and foreign airport taxes are not included and will be billed prior to your departure. Tips to drivers and naturalist guides are not included and are at the discretion of the tour members. A suggested tipping chart will be forwarded with the final documents.

INOCULATIONS: We would suggest you contact your personal physician or local health department for their recommendations as to inoculations. At the time of printing, no vaccinations are required for entry into Costa Rica. Water is safe to drink, but we always recommend bottled water.

RATES: All rates quoted are based on tariffs and value of foreign currencies in relation to the U.S. dollar in effect as of June 28, 2011, and are subject to change. Rates are based on a minimum of 6 passengers traveling together (with a maximum of 24 passengers). The right is reserved to levy a surcharge if minimum is not met, but that is rarely done. We will do our utmost to keep to the prices as published. Should increases be forced on us by airlines, exchange rates, etc., we reserve the right to surcharge.

Schedules, accommodations and prices are accurate at the time of writing. They are subject to change.



ESCORT: Group will be accompanied by a Zoo escort with a minimum of 10 travelers on both the main tour and the extension.

TRIP INFORMATION: Upon receipt of your application, instructions will be sent to you concerning all aspects of your trip, such as itinerary, photographic equipment, documents, clothing, insurance, etc.

INVOICING: Final invoicing of your trip will be done approximately four months prior to departure. Final payment is due 75 days prior to departure (January 6, 2012).

FINAL DOCUMENTS: Final documents and tickets will be sent to you approximately three weeks prior to departure. We regret to advise that no documents can be released if final payments are not received.

PAYMENT SCHEDULE: A deposit of \$500 per person for the main trip and \$100 for the extension must be submitted with each application, as well as your insurance payment if you wish to take advantage of the pre-existing medical condition exclusion. Deposits may be paid by check or charged to American Express, MasterCard, Visa or Discover. Final balance is payable by check or money order ONLY and is due no later than 75 days prior to departure (January 6, 2012).

CANCELLATIONS: Cancellations are only effective on receipt of written notification. The following per person fees are applicable on this tour:

- Up to 75 days prior to departure, less \$250.00 handling fee.
- 74-60 days prior to departure, deposit is forfeited.
- 59-45 days prior to departure, less 50% of tour cost on both the main trip and the extension.
- Less than 45 days prior to departure, refund is dependent on amount recoverable from overseas suppliers.

These cancellation fees are also in addition to any imposed by airlines. **WE STRONGLY RECOMMEND THAT YOU OBTAIN THE OPTIONAL INSURANCE POLICY. INFORMATION WILL BE SENT TO YOU UPON RECEIPT OF RESERVATION FORM. INSURANCE PREMIUMS ARE NOT REFUNDABLE.**

DEVIATIONS: Should additional reservations be required, including extensions in other countries in South America, we will happily make all the arrangements. However, there will be an extra charge of \$150 per person for such deviations, over and above the cost of the services required.

CHANGE FEES: Once you reserve your tour, changes are possible subject to availability of air or land space at the time of request. Should there be any change fees imposed by airlines or ground operators, or additional costs incurred due to availability of any space, this cost will be invoiced to you.

LATE BOOKING FEE: Classic Escapes reserves the right to impose a late booking fee to offset additional administrative costs for any reservations received 60 days (or closer) to the program's departure date. This fee is \$250 per person, over and above any costs incurred by airlines and suppliers.

NOT INCLUDED: Cost of passport; excess baggage charges levied by airlines; beverages and meals not specified in itinerary; gratuities to drivers, naturalist guide, and other conveyance attendants; laundry and other items of a personal nature; gratuities not imposed by hotels and/or restaurants for included services; optional personal, baggage and tour cancellation insurance policy; U.S. and foreign airport taxes; foreign departure taxes, and cost for anything not specifically included in listing above.

PASSPORT & VISAS: The onus is upon the guest to ensure that passports are valid. Visas for American citizens are not required for Costa Rica, however if you're holding a passport from any other country, please check with the consulates to ensure that you won't have a problem entering.

RESPONSIBILITY: Neither Classic Escapes (the Company) nor any person or agent acting for, through or on behalf of the Company shall be liable for any loss or damage whatsoever arising from any cause whatsoever and without restricting the generality of the foregoing shall particularly not be responsible for loss or damage arising from any errors or omissions contained in its brochure or other literature, loss or damage caused by delays, sickness, theft, injury or death. In addition the Company shall have the right at any time at its discretion to cancel any tour or the remainder thereof or make any alteration in route, accommodation, price or other details and, in the event of any tour being rendered impossible, illegal or inadvisable by weather, strike, war, government or interference or any other cause whatsoever, the extra expenses incurred as a result thereof shall be the responsibility of the passenger. The Company may at its discretion and without liability or cost to itself at any time cancel or terminate the guest's booking and in particular without limiting the generality of the foregoing it shall be entitled to do so in the event of the illness or the illegal or incompatible behavior of the guest, who shall in such circumstances not be entitled to any refund. The person making any booking will, by the making of such booking, warrant that he or she has authority to enter into a contract on behalf of the other person included in such a booking and in the event of the failure of any or all of the other persons so included to make payment, the person making the booking shall by his/her signature thereof assume personal liability for the total price of all bookings made by him/her.

PHOTOGRAPHY: The Company reserves the right without further notice to make use of any photograph or film taken on the tour by our photographers without payment or permission. We guarantee that no photographs of a compromising nature will be used.

CHANGES TO SCHEDULES: Although every effort is made to adhere to schedules it should be borne in mind that the Company reserves the right and in fact is obliged to occasionally change routes as dictated by changing conditions.

Schedules, accommodations and prices are accurate at the time of writing. They are subject to change.



REFUNDS: While the company uses its best endeavors to ensure that all anticipated accommodation is available as planned, there shall be no claim of any nature whatsoever against the Company for a refund either in the whole or part, if any accommodation or excursion is unavailable and a reasonable alternative is not found. If the guest is unable to use any service provided in the itinerary, then there are no refunds due.

AIRLINE CLAUSE: The airlines concerned are not to be held liable for any act, omission or event during the time the passengers are not on board their planes or conveyance. The passengers' tickets in use by the airline or by other carriers concerned when issued shall constitute the sole contract between the airlines and the purchaser of these tickets and/or passengers.

DELAYS: We cannot be held liable for any delays or additional costs incurred as a result of airlines not running to schedule.

If one of our guides is unable to take a tour due to illness, etc. we reserve the right to substitute with another guide.

This agreement is made subject to and shall be governed by and construed according to the laws of the country in which the tour takes place. Classic Escapes act merely as an agent for the operating companies.

To the best of our knowledge the itinerary is correct at the time of writing. We cannot be held responsible for any inaccuracies or changes that may occur after printing.

CONSENT: The payment of the deposit OR any other partial payment for a reservation on a tour constitutes consent by all guests covered by that payment to all provisions of the conditions and general information contained in this brochure whether the guest has signed the booking form or not. The terms, under which you agree to take this tour, cannot be changed or amended except in writing signed by an authorized director of the Company.

INSURANCE: It is a condition of booking that the sole responsibility lies with the guest to ensure that they carry the correct comprehensive travel and medical insurance to cover themselves, as well as any dependants/traveling companions for the duration of their trip. This insurance should include cover in respect of, but not limited to, the following eventualities: cancellation or curtailment of the program, emergency evacuation expenses, medical expenses, repatriation expenses, damage/theft/loss of personal baggage, money and goods. Classic Escapes, including their representatives, employees and agents will take no responsibility for any costs, losses incurred or suffered by the guest, or guest's dependants or traveling companions, with regards to, but not limited to, any of the above mentioned eventualities. Guests will be charged directly by the relevant service providers for any emergency services they may require, and may find themselves in a position unable to access such services should they not be carrying the relevant insurance cover. **PLEASE NOTE INSURANCE PREMIUMS ARE NON-REFUNDABLE SHOULD TOUR BE CANCELED BY PARTICIPANT.**

INSURANCE PACKAGE: Classic Escapes offers a comprehensive insurance package, which allows the Pre-Existing Condition Exclusion to be waived if purchased within 7 days of the initial trip payment. Details can be found on our website at <http://www.classicescapes.com/insurance.html>. or call our office for more details (800-627-1244). If obtaining this pre-existing condition waiver is not of importance to you, you may opt to wait until you receive your pre-departure packet of information which will include details on the insurance package.

INSURANCE PREMIUM: See premium schedule below, or call us for the exact amount and information on the policy. This is applicable to all coverage contained in the policy. You must be medically able to travel when you pay your premium. In the event that a claim is filed, the injury or illness must be substantiated to the Claims Department.

The cost of your insurance premium is based on the TOTAL cost of your trip including: the main itinerary, airfare, airline taxes, single supplements, optional excursions and optional extensions. The premium for your tour will be calculated as follows:

TOTAL TOUR COST	PREMIUM PER PERSON
\$2,501 - \$3,000	\$202
\$3,001 - \$3,500	\$237
\$3,501 - \$4,000	\$273
\$4,001 - \$4,500	\$308
\$4,501 - \$5,000	\$343
\$5,001 - \$5,500	\$411
\$5,501 - \$6,000	\$449
\$6,001 - \$6,500	\$488

Please contact Classic Escapes if you have any questions or need assistance calculating your premium.

PLEASE NOTE INSURANCE PREMIUMS ARE NON-REFUNDABLE SHOULD TOUR BE CANCELED BY PARTICIPANT.



Enclosed is my deposit for \$ _____ (\$500 per person, plus \$100 for either extension) to hold _____ place(s) on The Discovery Journeys: Classic Adventure to Costa Rica departing on March 21, 2012 with the Lincoln Children's Zoo. Cost is \$2,595 per person, double occupancy, land only. Additional international air from Lincoln is \$1,250, PLUS \$201 departure taxes and/or fuel surcharges. (Currently, subject to change)

Final payment due date is: January 6, 2012

Please make check payable to CLASSIC ESCAPES and mail to 58-25 Queens Blvd., Woodside, NY 11377

OR

Charge deposit to: MasterCard Visa American Express Discover

(Credit Card Authorization form needs to be completed and returned to Classic Escapes via mail or fax to 718-204-4726)

Deposits can be made by credit card; however, all final payments are required to be made by check or money order only.

1) NAME (As appears on passport): Mr. Mrs. Ms. _____

2) NAME (As appears on passport): Mr. Mrs. Ms. _____

NAME FOR NAME BADGE IF DIFFERENT FROM ABOVE: 1) _____ 2) _____

STREET ADDRESS: _____

CITY: _____ STATE: _____ ZIP: _____

PHONES: HOME: () _____ OFFICE: () _____ MOBILE: () _____

E-MAIL ADDRESS: _____ FAX: () _____

- I certify that I have not recently been treated for, nor am I aware of any physical or other condition or liability that would create a hazard to myself or the other members of this tour.
- The two of us above are sharing a room and, where possible, would like a room with: ONE TWO Beds (Make one selection only)
- I am sharing with _____ (form sent separately)
- I need assistance in securing a roommate. I understand if Lincoln Children's Zoo or the tour operator cannot locate one for me by final payment date, I agree to pay the additional single supplement amount . I prefer to share with: Smoker Non-smoker
- I desire single accommodations, if available, and will pay the single supplement additional cost of:
 \$TBA for the main trip \$1,095 for Central Pacific post-extension

- Please make my/our round trip air reservations on the group flights from Lincoln via American Airlines.
- Please make domestic round-trip air reservations for me from my home city: _____ to connect with the group flights and let me know the additional cost.
- Please send me information on air upgrades for: Business/First Class (only one class - business/first - exists)
 Airline Seating Preference Aisle Window Frequent Flier # _____
***We can request a seating preference on your behalf, however this is only a request and NOT guaranteed, as some seating assignments may be airport check-in only. Requests should be made in writing no later than 60 days prior to departure. Bulkhead and/or emergency row seats can only be requested at airport check-in on the day of departure. Also note that even if we do obtain your preferred seat, it is not guaranteed that the seat will be provided during check-in as there might be equipment changes that nullify our selection.*
- I/We will make own air arrangements and will provide you with an itinerary before trip departure.

- I/We wish to participate in the optional extension(s) at an additional per person cost of:
 \$1,095 for Central Pacific post-extension.
- Optional Insurance - See attached schedule for exact cost and include with your initial deposit if you wish to take advantage of the pre-existing medical condition exclusion. Yes, I wish to purchase insurance now No, I will purchase insurance at a later date or provide my own through another source.

All rates quoted are based on tariffs and value of foreign currencies in relation to the U.S. dollar in effect as of June 28, 2011, and are subject to change. Refund of deposit is made if cancellation is received in writing up to 75 days prior to departure, less \$250 per person handling fee. Thereafter, refund is made less any cancellation charges levied in accordance with the policy outlined in the accompanying Conditions of Travel. **WE STRONGLY RECOMMEND THAT YOU OBTAIN TRAVEL INSURANCE. RESERVATIONS ARE ACCEPTED SUBJECT TO TOUR CONDITIONS AND WILL BE CONFIRMED ONLY IF ACCOMPANIED BY COMPLETED FORM SIGNED BY THE TOUR PARTICIPANT(S).**

SIGNATURE: _____ DATE: _____

SIGNATURE: _____ DATE: _____

CLASSIC ESCAPES INC.
 58-25 QUEENS BLVD.
 WOODSIDE, NY 11377

(We recommend that you keep a copy of your selections as noted above for your future reference)



58-25 Queens Blvd. Woodside NY 11377

T: (718) 204-7077; (800) 627-1244

F: (718) 204-4726

E: info@classicescapes.com

CREDIT CARD PAYMENT AUTHORIZATION

Please Note: If you wish to charge your deposit to Visa, MasterCard, American Express or Discover, this authorization form MUST be completed and returned to us along with your reservation form before we can process your application.

I authorize (**Classic Escapes Inc.**) to charge my VISA/MASTERCARD/DISCOVER/AMEX listed below:

Name appearing on credit card _____

Card number _____ Expiration date _____

Card Verification Number* _____ Card Type _____

Billing address of credit card _____

Amount of transaction _____

Services rendered/Items purchased _____

Phone number _____

Signature _____ Date _____

***How To Locate Your Card Verification Number:**

(**Visa, MasterCard, Discover:** Locate the credit card number on the back of the card above the signature box. Enter the 3 digit number which follows the credit card number. **American Express:** Enter the 4 digit number found directly above and to the right of the credit card number.)

I understand that all rates quoted on this tour I'm making a payment on are based on tariffs and value of foreign currencies in relation to the U.S. dollar in effect as of June 28, 2011, and are subject to change. Refund of deposit is made if cancellation is received in writing up to 75 days prior to departure, less \$250 per person handling fee. Thereafter, refund is made less any cancellation charges levied, based on the following schedule:

- Up to 75 days prior to departure, less \$250 handling fee.
- 74-60 days prior to departure: deposit is forfeited.
- 59-45 days prior to departure: 50% of the tour cost on both the main trip and the extension.
- Less than 45 days prior to departure, refund is dependent on amount recoverable from overseas suppliers.
- These cancellation fees are also in addition to any imposed by airlines.
-

PLEASE NOTE: At times, our bank requires photocopy of credit card (both sides) and driver's license or document showing signature of cardholder, in order to process the charge. While it is not required at this time that you include these materials with your deposit, if our bank requests it, we will contact you for these copies.