

A CLASSIC SAFARI TO  
**SOUTHERN AFRICA**  
*INCLUDING CAPE TOWN, SABI SANDS, VICTORIA FALLS & BOTSWANA*

SPECIALLY PREPARED FOR  
**LISA & TOM TEUFEL**

**AFRICAN ODYSSEY**

SEPTEMBER 16 TO OCTOBER 3, 2023



191 W Poplar Street, Floral Park, NY 11001  
T: (718) 280-5000; (800) 627-1244  
F: (718) 204-4726  
E: [info@classicescapes.com](mailto:info@classicescapes.com)  
W: [www.classicescapes.com](http://www.classicescapes.com)

For more information, find us on:  
f [facebook.com/Classic.Escapes.inc](https://facebook.com/Classic.Escapes.inc)  
t [twitter.com/classicescapes](https://twitter.com/classicescapes)  
i [instagram.com/classic\\_escapes](https://instagram.com/classic_escapes)

## YOUR ITINERARY

---

### DAY 1~SATURDAY~ SEPTEMBER 16

#### CAPE TOWN/KIRSTENBOSCH BOTANICAL GARDEN

Arrive in Cape Town (9:25 am), South Africa's "Mother City". Upon arrival, you will be met by your Classic Escapes representative and escorted to your hotel. The provincial capital, Cape Town, is a sophisticated city with plenty to see and do, particularly around the Victoria and Alfred Waterfront area, where delightful buildings of Cape Dutch and Victorian-era architecture have been restored as shops, restaurants, museums, and pubs, while the busy water traffic of the docks goes on unabated.

Your afternoon is devoted to Kirstenbosch Botanical Gardens, arguably one of the most beautiful gardens in the world. Founded in 1913, Kirstenbosch lies on the eastern slopes of Table Mountain and consists of landscaped gardens of indigenous plants and trees, watered by the Liesbeek River, as well as the natural forest that extends up to the lower slopes. Kirstenbosch covers an area of 1,383 acres, 148 of which are cultivated; the remainder is a natural flora reserve. It is a living display featuring 9,000 of the estimated 20,000 species of indigenous South African flora, and close to 50% of the peninsula's floral wealth. In the cultivated area, related plants are grouped together and radiate from the central lawns like the spokes of a wheel.

*The Radisson Blu Waterfront Cape Town is spectacularly situated on the edge of the Atlantic Ocean overlooking its own private marina and the famous Robben Island. This first-class international hotel combines high levels of luxury with efficient service and the warmth of true South African hospitality. The hotel offers 177 accommodations with minibars and safes. 35-inch LCD televisions come with satellite channels. Bathrooms include separate bathtubs and showers with rainfall showerheads, bathrobes, slippers, and complimentary toiletries. Guests can surf the web using complimentary wireless Internet access. An indoor pool and an outdoor pool are on site. Other recreational amenities include a health club and a sauna.*

Overnight at RADISSON BLU WATERFRONT HOTEL, in a superior room. (No Meals)

<https://www.radissonhotels.com/en-us/hotels/radisson-blu-cape-town-waterfront>





## DAY 2~SUNDAY~ SEPTEMBER 17

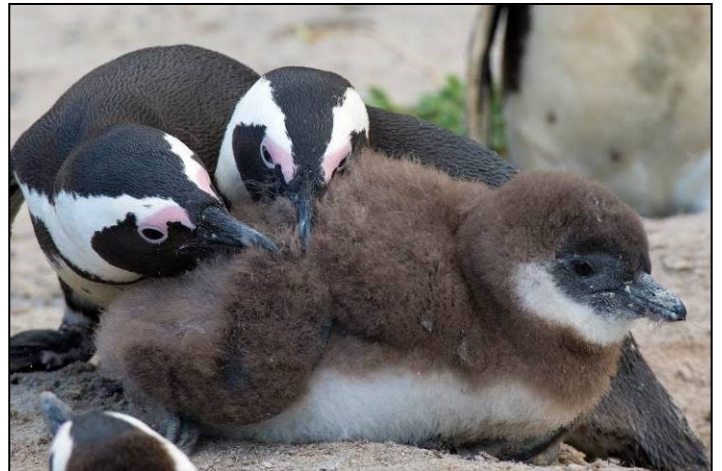
### CAPE TOWN~ CAPE PENINSULA

Your luxury vehicle takes you on a breathtaking coastal drive to the Cape of Good Hope, surrounded by spectacular mountains, rugged shorelines, and the blue sea below. See Devil's Peak, Lion's Head, Table Mountain, and the Twelve Apostles. Pass quaint seaside towns as you continue to Cape Point, where the stormy waters of the Atlantic meet up with the calm waters of the Indian Ocean. At Cape Point, climb the steps or ride a funicular to the top where you can explore a lighthouse, enjoy the views, or even indulge in a bit of shopping. Take a close look at the ocean, where you may see southern right whales in the spring and early summer as well as dolphins and a variety of seabirds.



You will also have the chance to explore the Cape Point Nature Reserve, which is host to approximately half of the 2,700 species of indigenous plants contained in the Cape Peninsula. Look for the distinctive orange found in leucospermums, one of the rarest types of proteas – the mimetes, marvel at the helichrysums and pelargonium calcellums, and enjoy the ericas, phenacomias, and fine bush which the Dutch called “fynbos.” There are 250 species of birds in the reserve, ranging from ostriches to minuscule sunbirds. Caracal, chacma baboon, a wide variety of bucks, and various other mammal species may be seen, including Cape Mountain zebra and the bontebok which is endemic to this part of the world. The baboons feed occasionally on marine foods which they garner at low tide. At Olifants Bay, look for Oystercatchers, and enjoy some superb birding.

Enjoy lunch at the Seaforth Restaurant and continue to Boulders Beach where the African (Jackass) Penguins can be seen – also known as the Black-footed Penguins. These flightless seabirds are found only on the coast of Southern Africa and are the only penguins found on this continent. Enjoy a delightful walk on a specially built platform onto the little sheltered beach where they nest among the rocks, and "waddle" up and down into and out of the sea. Since the penguins are accustomed to the presence of humans, you can safely get within a few feet of them as you stand on the platform, and it is sometimes possible to view them nesting behind rocks and bushes.



Return to your hotel in the late afternoon and enjoy your evening at leisure.

Overnight at the RADISSON BLU WATERFRONT HOTEL. (B,L)





### DAY 3~MONDAY~ SEPTEMBER 18

#### CAPE TOWN: TABLE MOUNTAIN & CAPE MALAY

Get a feel of what Cape Town is all about by taking the cable car to the top of Table Mountain, the signature of this city, easily one of the most recognizable mountains. This tour is very dependent on the wind factor, as well as the clouds. Many a time a cloud covers this flat-topped mountain, which rises to 3,563 feet above sea level and the locals affectionately say it's a white tablecloth. Legend has it that a retired pirate, on climbing the mountain, met up with the devil. To preserve his soul, the pirate challenged the devil in a smoking contest. So, they stoked up their pipes and have been smoking ever since. For centuries Table Mountain has been a guiding beacon to mariners rounding the Cape of Southern Africa. Sir Francis Drake described it as "the most stately thing and the fairest cape we saw in the whole circumference of the earth."



Despite its formidable appearance, it is possible to hike up Table Mountain. The first recorded ascent was in 1503 by the Portuguese navigator Antonio da Saldanha who, confused by the Cape Peninsula geography, climbed to the summit via the frontal cleft, now known as Platteklip Gorge. For nature lovers, the birding is awesome, and the wildflowers include agapanthus, watsonias, and red nerines which poke out from rock crevices amid a scrub of ericas and gnarled proteas. More than 1400 species of flowering plants have been recorded on the mountain which makes it a spectacular sight in the spring. Cute guinea pig-like creatures known as rock dassies, or hyraxes, (genetically, the closest living relatives to elephants) scuttle everywhere. They are not afraid and scamper among the tourists seeking to be fed.

Afterward, drive to the Cape Malay Quarter, or 'Bo-Kaap' which sprawls along the slopes of Signal Hill, bordering Cape Town, presenting a scenario of enduring historic and cultural significance. It's certainly worth taking the time to explore the area when you come to Cape Town. Bo-Kaap's attractive, brightly colored, flat-roofed houses, decorative mosques, and the sound of the muezzin calling over the city streets have remained relatively undisturbed for all this time. The major threat facing this attractive area is now not forced removals, but gentrification, as image-conscious yuppies move into and renovate the lovely old buildings, taking advantage of the sea views and proximity to the city center.

Here, you will have a hands-on, practical lesson on how to cook like a real Cape Malay 'Auntie!' Learn how to fold samosas and mix masala for that perfect pot of Cape Malay curry!



A local woman will host you at her home, where you will not only learn secret cooking techniques but also get an insight into daily life in the Bo-Kaap. The workshop ends with lunch where you can share your experiences with the group whilst indulging in a mouth-watering traditional meal.

Return to your hotel in the afternoon and discover tonight on your own one of the numerous restaurants that Cape Town has to offer.

Overnight at RADISSON BLU WATERFRONT HOTEL. (B,L)



#### DAY 4~ TUESDAY~ SEPTEMBER 19

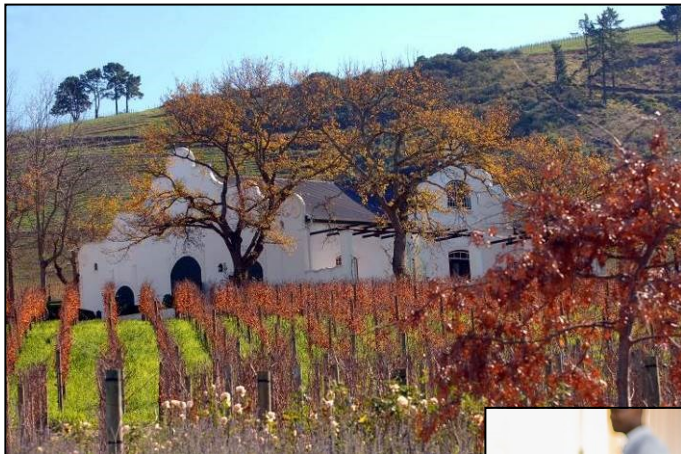
##### CAPE TOWN~ WINELANDS

Today you will venture off on a full-day expedition to the Winelands region situated below the spectacular Boland Mountains only 50 minutes from the city. Discover the internationally acclaimed vineyards of Stellenbosch and Franschhoek on the Western Cape, along a most scenic route. A stop at the historic estate of Boschendal will introduce you to some of the most brilliantly preserved Cape Dutch buildings in the Cape and its collection of priceless period furniture. Continue to Franschhoek to discover lovely antique shops and gardens, nestled in the "Valley of the Huguenots" where the French first settled in 1688.



Lunch will be at the spectacular Delaire Graff for a delicious farm-to-table lunch, and the most unparalleled views of the Winelands. Finish off with the university town of Stellenbosch, the oldest town in South Africa after Cape Town, undoubtedly the most scenic and historically preserved town in Southern Africa. Oak-lined streets next to water furrows compliment the many fine examples of elegant Cape Dutch, Victorian and Georgian architecture – all part of this unique "Town of Oaks."

Enjoy a wine tasting at three different wine estates where you will be able to purchase your favorite wine to take back home. Return to Cape Town in the late afternoon where your evening is at leisure. Overnight at the RADISSON BLU WATERFRONT HOTEL. (B,L; Three wine tastings)





**DAYS 5/6/7~WEDNESDAY/THURSDAY/FRIDAY ~ SEPTEMBER 20/21/22**  
**CAPE TOWN/ SABI SAND GAME RESERVE~ LION SANDS**  
**RIVER LODGE**

Leave Cape Town behind you as you fly to Skukuza airport and the Sabi Sand region, adjacent to Kruger National Park, one of the most prolific spots in Africa for viewing wildlife. The game-rich 139,000-acre Sabi Sand Game Reserve, formed in 1950, shares 31 miles of unfenced boundary with Kruger National Park; therefore, animals are at liberty to wander in and out as they wish. Most of the game in Sabi Sand tends to stay put because both the Sand and Sabi rivers supply much-needed water in the dry season, thus creating an ecosystem with one of the highest and most bio-diverse wildlife populations in Southern Africa. Spotting the 'Big Five' (lion, leopard, rhinoceros, buffalo, and elephant) is an easy task as well as numerous other animals and birds, including a diversity of summer migrants.



The characteristic species of the Sabi Sand are impala, greater kudu, giraffe, buffalo, lion, and leopard. Lions are the only truly social members of the cat family, and sightings of lion prides are the order of the day here. Open water channels and pools are favored by hippos while reed beds are favored by buffalo and elephants. The riverine forest along the river is green all year round and is the haunt of leopards, greater bush babies (galago), and bushbuck. The dainty-hoofed klipspringer and rock dassie (hyrax) aren't the only mammals restricted to rocky outcrops in the Sabi Sand; Chacma baboons also use the outcrops as vantage points.



*The Lion Sands River Lodge is nestled on the banks of the Sabi River and is the soul of Lion Sands. It is positioned on a site with trees dating back 800 years. The lodge is about spirit, warmth, nature, and relaxation as it faces due east, catching the sun as it rises over Kruger National Park. Each of the 18 luxurious, thatched bedrooms offers respite and protection from the Lowveld heat and features an en suite bathroom, outdoor and inside shower, and a wooden viewing deck. The bedroom area is cooled with air-conditioning and overhead fans. All rooms have a minibar and telephone access and are linked to all areas by raised wooden walkways. The lodge's swimming pool is arguably the best wildlife viewing spot with an uninterrupted view of the river and the rising bush beyond, making it a welcome spot to catch a glimpse of elephants or giraffes. Other havens include a health spa on the premises, a secluded bird hide, private hammocks, and a comfortable lounge area.*

Overnights at the LION SANDS RIVER LODGE, in a superior luxury room. (All Meals Daily)

<https://www.more.co.za/lionsands/river-lodge/>



**DAYS 8/9/10~SATURDAY/SUNDAY/MONDAY~ SEPTEMBER 23/24/25**  
**SABI SAND GAME RESERVE/VICTORIA FALLS, ZIMBABWE**



Early morning, road transfer to Mpumalanga Airport to board your flight (FN 8802 departs 12:45 pm and arrives 2:30 pm) to Victoria Falls, Zimbabwe, and the mighty Victoria Falls. Upon arrival, you will be met and transferred to your accommodations at the Elephant Camp.

At more than twice the size of Niagara Falls, it's no surprise that Victoria Falls is among the Seven Wonders of the World. Mosi-oa-Tunya (*The Smoke that Thunders*), derived from the towering column of spray when the Zambezi River runs high, is the name that Zimbabwe's local people have given to this awesome natural phenomenon. The name is probably more appropriate and descriptive than "Victoria", which has a far too calm and composed ring to it to do justice to the masses of thundering, swirling water of these spectacular falls. But all Dr. David Livingstone probably thought of when he named the falls after his Queen in 1855 was his royal duty. Five separate falls make up this incredible spectacle that plunges more than 300 feet into a sheer-sided chasm that separates Zimbabwe from Zambia. The awe-inspiring abyss is spanned by a 1905 Edwardian bridge that links the two countries and many adventurers now use to bungee jump. The masses of water plunging down the falls and into the gorge below originate from the mighty Zambezi River that meanders through more than 1,677 miles of the African countryside.





Your visit will include a tour of the falls on the Zimbabwe side. An afternoon sundowner cruise will be a highlight as you glide along the Zambezi River, watching hippos snort, elephants drink on the riverbank, monkeys jump from branch to branch, birds fly overhead or pose for a photograph on the branches, and much more. Enjoy your gin and tonic, cool beer, or drink of choice, and see a panoramic sunset as the sun dips below the horizon, painting the whole area in unbelievable colors of brilliant reds, yellows, purples, and mauves.



*The Elephant Camp is a luxury and intimate lodge under canvas built in a private concession bounded by the Masuwe River, and the Zambezi Gorges, some six miles from the town of Victoria Falls. Elephant Camp enjoys the breathtaking view of the gorges which separate Zimbabwe and Zambia. The camp offers exclusive suite accommodation in 12 luxury tents. All suites are gorge-facing and have a private viewing deck and plunge pool, private lounge area, air-conditioning and fans, bath, inside and outside shower, mini bar, and tea/coffee stations. All suites are mosquito proofed with mosquito nets. Elephant Camp is home to four orphaned elephants and all guests staying at the camp will have an opportunity to meet and interact with the Wild Horizons elephants.*

Overnights at the ELEPHANT CAMP, in the west luxury wing. (All Meals Daily)  
[www.theelephantcamp.com](http://www.theelephantcamp.com)



#### **DAYS 11/12/13~TUESDAY/WEDNESDAY/THURSDAY~ SEPTEMBER 26/27/28**

#### **VICTORIA FALLS/OKAVANGO DELTA/KWANDO CONCESSION~ KWANDO LAGOON CAMP**

Cross the border by road into Botswana and proceed to Kasane for your flight to the Kwando region of Botswana. You will stay for three nights at the Kwando Concession, a vast, wild, and remote tract of land that borders Namibia, with a variety of habitats from riverine forest to mopane, to extensive floodplains with islands. The Kwando River forms the eastern border of the concession and the northern border of Botswana and its neighbor, Namibia. The concession is nearly 80,000 acres, and in this wild paradise, there are only two small camps.

Morning and night game drives are conducted by your specialist guides and trackers in open safari vehicles. This area is home to huge herds of elephants and buffalo. There are few places in Africa where such concentrated numbers of these animals exist, especially in the dry season. Another special feature of the camp is the afternoon river cruise. The unique double-deck boat allows guests the opportunity to drift along the river while enjoying spectacular views, and mammal and bird life while sipping at your 'sundowner' of choice.



The shady, treed environment of the camp hosts a great variety of birds and squirrels that visit daily. A family of hippos and an elephant or three are regularly sighted from the tents. The predators are also well represented by lions, hyenas, leopards, cheetahs, and wild dogs. These animals are generally very relaxed in the presence of vehicles, meaning their sighting are usually at close range.



Among the great variety of antelope species found at the lagoon, the endangered Sable and Roan are often seen. Seasonally, large herds of elephant drink almost daily at the river bank in front of the camp, in full view of the guests. The big herds attract big predators. The lions of Kwando are famous for their elephant, hippo and buffalo kills. Playful spotted necked otters are commonly seen performing in the lagoon right in front of the tents.

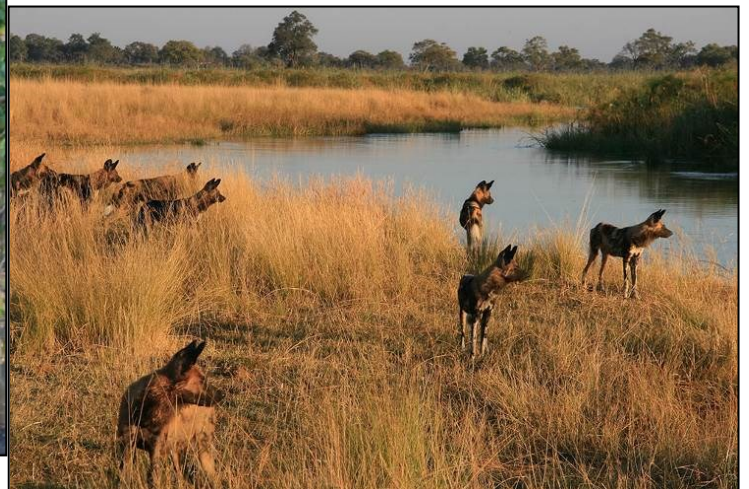
*Your home for the next three nights, Kwando Lagoon Camp, lies on the shady banks of the Kwando River among tall and ancient African Ebony and Marula trees, under the watchful gaze of the resident hippos. Lagoon Camp accommodates only 18 guests in 9 twin bedded luxury safari-style tents. Each tent looks out over the water and has private en-suite facilities, including 24-hour hot and cold running water, open-air showers, flush toilets, and modern amenities. Over the years, many guests have commented that Lagoon Camp stands out as one of the most beautiful settings of any safari camp. One of only two camps on the vast game-rich Kwando concession, Lagoon Camp offers a very exclusive safari experience.*

Overnights at the KWANDO LAGOON CAMP (All Meals Daily)  
<https://www.kwando.co.bw/lagoon>



**DAYS 14/15/16~FRIDAY/SATURDAY/SUNDAY~ SEPTEMBER 29/30 & OCTOBER 1**  
**OKAVANGO DELTA~ KWARA CONCESSION~**  
**KWARA CAMP**

Back on the plane for your flight to one of the world's most distinctive regions, the Okavango Delta – earth's largest inland water system. Its headwaters start in Angola's western highlands, with numerous tributaries joining to form the Cubango River, which then flows through Namibia (called the Kavango) and finally enters Botswana, where it is then called the Okavango. Millions of years ago the Okavango River used to flow into a large inland lake called Lake Makgadikgadi (now Makgadikgadi Pans). Tectonic activity and faulting interrupted the flow of the river causing it to back-up and form what is now the Okavango Delta. This has created a unique system of water ways that now supports a vast array of animal and plant life that would have otherwise been a dry Kalahari savannah.





Spend the next three nights at Kwara Camp situated in the 432,000-acre private Kwara Concession in the remote northern part of the Okavango Delta. The area is one of permanent Delta water, and this unspoiled pristine wilderness has a variety of habitats ranging from reed and papyrus-lined waterways to rolling grasslands and ancient forests.

Kwara has a double-deck pontoon boat which allows guests to get very close to birds and animals for excellent photographic opportunities and wildlife viewing. Well-trained guides will also conduct walks through the islands of the Delta. Fishing at Kwara is also superb and the famed tiger fish, as well as bream, catfish and pike are frequent catches. Kwando Safaris subscribes to the catch and release policy. The area is home to an astounding array of mammal and bird life, including lion, hyena, leopard, cheetah, and wild dog. There are large populations of elephant, buffalo, zebra, and rare sable antelope, and over 300 species of birds.

*The camp is situated on a forested island under tall trees overlooking a lagoon in the open flood plains of the 3.9 million-acre Okavango Delta. At Kwara, you will discover why the Okavango Delta is considered one of the jewels of Africa and, indeed, the world. It is mysterious, calming, unpredictable, and very wild. Facing west across a lagoon, the nine tents enjoy spectacular sunsets. The tents are built on raised teak decks each with ensuite facilities. The intimate dining and lounge area is under thatch, built around a large shade tree overlooking the lagoon. Due to the specific location of the camp, Kwara is able to offer power boating, mokoro (dugout canoe) trips, walks and wildlife drives all year round. The presence of permanent water ensures year-round game viewing and also allows mokoro trips in shallow water throughout the year.*

Overnights at KWARA CAMP. (All Meals Daily)

<https://www.kwando.co.bw/kwara>





**DAYS 17/18~MONDAY/TUESDAY~ OCTOBER 2/3**  
**KWARA CONCESSION/MAUN/ JOHANNESBURG/USA**

Enjoy a last wildlife run this morning and a hearty breakfast before flying back to Johannesburg via Maun where you connect with your flight back home arriving the next day, bringing with you the memories of all the wonderful sights of Southern Africa. (B, Meals Aloft)





## INCLUSIONS

---

- Flight between Cape Town and Skukuza.
- Flight between Mpumalanga and Victoria Falls.
- Flights within Botswana.
- Flight between Maun and Johannesburg.
- Superior accommodations throughout as indicated or similar.
- All meals while on safari. Other meals as specified in itinerary.
- All wildlife viewing by 4X4 open vehicles, driven by professional driver/guides.
- Laundry and all local beverages during the safari in Botswana except for Champagne and imported spirits.
- Complimentary bottled water in vehicles.
- All applicable hotel and lodge taxes.
- All park entry fees.
- Complimentary baggage tags and a water bottle.
- Complimentary emergency evacuation insurance.

## EXCLUSIONS

---

- International Air. If you require assistance with air arrangements, contact Classic Escapes.
- U.S. and foreign airport taxes.
- Passport and visa fees and service charges for obtaining visas. US citizens do not require a visa for traveling to South Africa or Botswana but must obtain a visa in order to enter Zimbabwe.
- Excess baggage charges levied by airlines.
- Meals and beverages, other than those specified.
- *Gratuities should only be given as a reward for exceptional service and is at your discretion. We estimate \$10 per person/per day for your tours in Cape Town; \$15 per person/per day for the rangers in camps and \$8 for the trackers. \$10 per person/per day for the camp staff. \$5 per person to mokoro poler for each use of mokoro. \$5 per person for each arrival and departure transfer from the airport /hotel. These are daily per service estimates and an exact tipping chart will be detailed on your final itinerary.*
- Personal and baggage insurance.
- Cost for anything not specifically mentioned in the listing above.
- Optional insurance coverage is available for Baggage, Accident, and Trip Cancellation/Interruption at special low-cost group rates.

**Please Note That The Itinerary Sequence Is Correct At The Time Of Writing But Is Subject To Change.**





## THINGS YOU NEED TO KNOW ABOUT SOUTH AFRICA

---

### Participants:

- Participants must be able to climb in and out of safari 4x4 vehicles or minibusses, small aircraft, and boats/canoes unassisted. They should also be able to tolerate riding on uneven, bumpy dirt roads for long periods (6-8 hours maximum), as well as some off-road experiences when opportunities are allowed.
- Participants should also be able to stand and/or walk moderate distances at an easy pace for up to a few hours at a time when visiting villages, towns, or other sites. Some, if not most, of this walking may be on uneven ground or uphill, often at higher elevations and altitudes that many people are not used to.

### In general, this trip requires:

- Flexibility and good humor – unexpected changes and/or glitches will occur.
- A spirit of adventure and curiosity
- Interest in and willingness to appreciate a destination with uneven infrastructure and a bending definition of comfort. That being said, some locations are nestled in absolute luxury where pampering is the norm.

### Air Schedules

The cost of your program does not include international airfare. If you require assistance, please contact Classic Escapes at 718-280-5002 and we will happily provide air quotes to you. You may make your own international air arrangements, but please ensure you arrive/depart on the correct dates. Contact your Journey Manager at Classic Escapes to verify the dates to ensure there are no errors. **The start city for this program is Cape Town and the end city is Johannesburg, South Africa.**

*Upon registration, you must provide your full legal name as it appears on your passport. In the event an airline ticket is issued with incorrect information you have provided, you will be responsible for charges associated with reissuing the ticket.*





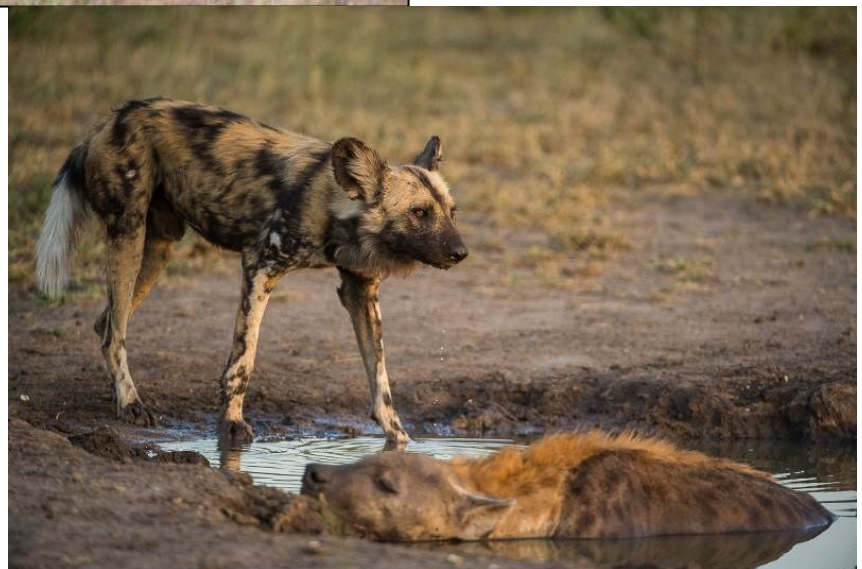
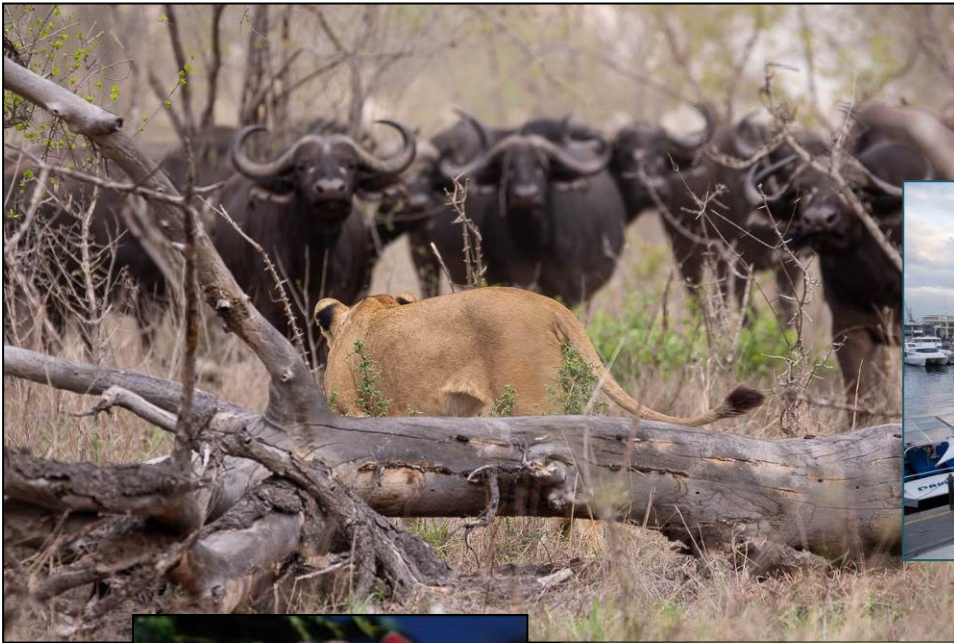
# YOUR JOURNEY AT A GLANCE

**INCLUDING:** CAPE TOWN, WINELANDS, KRUGER NATIONAL PARK, VICTORIA FALLS, OKAVANGO DELTA, KWANDO CONCESSION & KWARA CONCESSION

**DATES:** SEPTEMBER 16 TO OCTOBER 3, 2023

<b>COSTS:</b>	
LAND PACKAGE & FLIGHTS WITHIN SOUTHERN AFRICA.	\$25,995 PER PERSON

**INTERNATIONAL AIR ARRANGEMENTS:** The cost of your program does not include international airfare. If you require assistance, please contact Classic Escapes at 718-280-5002 and we will happily provide air quotes to you. You may make your own international air arrangements, but please ensure you arrive/depart on the correct dates. Contact your Journey Manager at Classic Escapes to verify the dates to ensure there are no errors. **The start city for this program is Cape Town and the end city is Johannesburg, Africa.**





## CONDITIONS OF TRAVEL:

---

The purchase of your travel booking constitutes a contractual agreement between the traveler(s), customer(s), and/or purchaser(s) (collectively as "**You**" and "**Traveler**"), and Classic Escapes ("**Classic Escapes**", "**We**", "**Us**") pursuant to the following terms and conditions ("**Terms**", "**Agreement**"):

### REGISTRATION & PAYMENTS

**HOW TO BOOK:** Fill out and sign the enclosed reservation form and send it, along with the relevant deposit as shown below, to: CLASSIC ESCAPES, 191 W Poplar Street, Floral Park, NY 11001.

**DEPOSIT AND FINAL PAYMENT:** You will be required to pay a deposit of \$6,500 per person.

All deposits are subject to the Cancellation policy herein. Final payment is required no less than 95 days prior to departure on **June 13, 2023**, unless otherwise stated. Some airfares or services must be paid in full at the time of booking. All payments may be made by check, wire transfer or credit card (American Express, Visa, MasterCard, or Discover). Conditioned on receipt of final payment in full, all final documents and air tickets will be sent to you approximately two weeks prior to departure.

**CREDIT CARD TRANSACTIONS:** If for any reason, any travel service provider is unable to provide the services for which you have contracted, your remedy lies against the provider, and not against Classic Escapes, and in the event that payment has been made to Classic Escapes by credit card, you agree that you will not seek to chargeback your payment to Classic Escapes. If the credit card is passed through to the travel service provider and you seek to chargeback your payment from the provider, you agree to be held liable and indemnify Classic Escapes against this chargeback from the provider, including without limitation any air debit memos charged to Classic Escapes. If the credit card is declined, you guarantee that you will settle any amounts owing to Classic Escapes via money order or cash immediately. Except in cases of fraud, you agree not to file any dispute with your bank or credit card company to avoid or violate any booking terms and conditions of Classic Escapes or its suppliers, including cancellations or changes of itinerary or arrangements for reasons beyond the control of Classic Escapes or its suppliers. If you attempt to chargeback, reverse, or recollect a previously authorized trip payment, Classic Escapes reserves the right to collect all additional costs, fees, and expenses associated with such chargeback, reversal, or recollection, including, without limitation, attorney fees.

**IMPORTANT CONDITIONS:** Prices are subject to increase prior to the time you make full payment. Prices are not subject to increase after you make full payment, except for charges resulting from increases in government-imposed taxes or fees. By signing the reservation form, you expressly acknowledge your acceptance of these conditions (i.e., increases before full payment and increases attributable to government-imposed taxes or fees after full payment will be your responsibility) applicable to your purchase.

**RATES:** Rates are based on the minimum number of guests outlined in this document, plus airfare costs, currency exchange rates, and other factors, and are subject to change. Though it is rare for Classic Escapes to make a price adjustment after the promotion of an itinerary, we do reserve the right to assess a surcharge if the minimum is not met, or if increases are forced upon us by airlines or other partners, or because of changes in currency exchange rates.

**ADDITIONAL FEES:** Additional taxes and surcharges that cannot be pre-collected may be charged locally. Cost of passport and visa fees and service charges for obtaining visa fees; excess baggage charges levied by airlines; laundry and other items of a personal nature; optional travel insurance policy(s); or any other costs incurred that cannot be pre-collected are NOT included and are the sole responsibility of the Traveler.

**GRATUITIES, ENTRANCE FEES & TAXES:** Service charges and taxes imposed by hotels, and entrance fees to all points of interest as outlined in the itinerary are included in the final cost. U.S. and foreign airport taxes are included in air costs. Tips to drivers and specialist guide(s) are **not** included and are the sole responsibility of the Traveler.

### CANCELLATIONS, DEVIATIONS & CHANGES

**TRAVEL INSURANCE:** We recommend travel insurance. Travel insurance can provide financial reimbursement should the unexpected occur.

**CANCELLATION:** Please be aware that most travel bookings are non-refundable and cancelled bookings will incur charges. These charges can be up to 100% of the cost of the booking, regardless of whether travel has commenced. Where we incur any liability for a cancellation fee or charge for any booking that you cancel, you agree to indemnify us for the amount of that fee or charge. Cancellations



are only effective upon receipt of written notification. The following per-person fees are applicable; however, depending on the specific itinerary or other factors, we may require a non-refundable deposit:

- Deposit once made is non-refundable.
- 95 days to 76 days prior to departure (June 13 to July 2, 2023), 25% refund is possible.
- 75 days or less prior to departure (July 3, 2023), no refund is possible.

These cancellation fees are also in addition to any fees imposed by airlines.

**REFUNDS:** While Classic Escapes uses its best endeavors to ensure that all anticipated accommodation is available as planned, there is no claim of any nature whatsoever against Classic Escapes for a refund, in whole or in part, if any accommodation or excursion is unavailable and a reasonable alternative is not found, or if the Traveler is unable to use any service provided in the itinerary.

**CHANGES:** Once your tour is reserved, changes to the itinerary are possible subject to the availability of air or land space at the time of your request. Should there be any change fees imposed by any airlines or ground operators, or additional costs incurred due to the availability of any space, these costs will be invoiced to you and you will be responsible for payment thereof.

## DOCUMENTS

**PASSPORTS:** All individuals departing from the United States of America must be in possession of a valid passport. Please check that your passport is valid for at least 6 months beyond your intended return date. It is your responsibility to ensure that you have valid travel documentation, including but not limited to passports and visas, which meet the requirements of immigration and other government authorities at every destination. You are responsible for confirming with the United States Department of State or the representative government agency of the country to which you are traveling to confirm the requirements for visas and/or other requirements for admission to your destination. Any fines, penalties, payments, or expenditures incurred as a result of such documents not meeting the requirements of those authorities will be your sole responsibility.

**REAL ID:** Beginning October 1, 2021, if you plan to use your state-issued ID or license to fly within the U.S., it is your responsibility to make sure it is REAL ID compliant. If you are not sure if your ID complies, please check with your local state Department of Motor Vehicles or visit [www.tsa.gov/real-id](http://www.tsa.gov/real-id).

**TRAVEL DOCUMENTS:** It is the responsibility of each Traveler to obtain and carry a valid passport, visa(s), and all other documents required by applicable government regulations. When traveling domestically or internationally, the U.S. Transportation Security Administration (TSA) and U.S. Department of Homeland Security (DHS) advise that everyone carry acceptable identification in order to board a flight. Acceptable identification can be found at <http://www.tsa.gov/traveler-information/acceptable-ids>. The name, date of birth and gender that appears on the identification card must exactly match the same such data that is listed on airline ticket(s) and booking records. You acknowledge any failure to strictly comply with these requirements may result in denied boarding or an undue delay at an airport security checkpoint causing Traveler to miss flight(s), and subsequent scheduled travel bookings on cruises and tours.

Travel documents include, without limitation, airline tickets, hotel vouchers, tour vouchers, or any other document (whether in electronic form or otherwise) used to confirm an arrangement with a service provider. Travel documents may be subject to certain conditions and/or restrictions such as, but not limited to, being non-refundable, non-date-changeable, and subject to cancellation and/or amendment fees. Travel documents cannot be transferred to another person to use. All airline tickets must be issued in the name of the passport/photo identity holder. An incorrect name on a booking may result in an inability to use that booking and the booking being cancelled. Any errors in names, dates, and timings may result in an inability to use that booking and the booking being cancelled. Any errors in names, dates, and timings on your documentation will be your responsibility if we are not advised at the time of booking. Please reconfirm your flights at least 24 hours prior to departure.

**PRE-DEPARTURE INFORMATION:** Upon receipt of your registration and deposit, we will send you an electronic pre-departure packet containing all the information you need to prepare for your tour, including the complete itinerary, packing checklist, required documents, insurance information, etc.

**FINAL DOCUMENTS:** Electronic final documents and air e-tickets will be sent to you approximately two weeks prior to departure, provided all monies have been paid in full.



## TRANSPORTATION

**AIR TRANSPORTATION:** Your program does not include international airfare. If you require assistance, contact Classic Escapes.

**FREQUENT FLYER MILEAGE:** Check on the airline's website to enquire who their partners are. Obtain frequent flyer mileage on any of these carriers. Present your frequent flyer card for all flight check-ins and keep the boarding passes until you receive a statement with the mileage credit.

**TRANSFERS:** Roundtrip airport transfers are included in the tour for guests arriving on group flights. If travelers make their own air arrangements, they will be subject to extra transfer fees.

**FLIGHT CONFIRMATION:** We strongly suggest that you reconfirm exact flight times with the carrier prior to departure. Air travelers are required to check in at least 2 hours prior to departure time for domestic flights and 3 hours for international flights and must report to the gate at least 30 minutes prior to departure time. Failure to comply may result in the loss of the seat to another passenger.

**HAZARDOUS MATERIALS:** Federal law prohibits passengers from carrying hazardous materials on the aircraft. Federal law forbids the carriage of hazardous materials aboard aircraft in the passenger's luggage or on the passenger's person. A violation can result in five years of imprisonment and penalties of \$250,000 or more (49 U.S.C. 5124). Hazardous materials include explosives, compressed gases, flammable liquids and solids, oxidizers, poisons, corrosives, and radioactive materials. Examples: Paints, lighter fluid, fireworks, tear gases, oxygen bottles, and radiopharmaceuticals. There are special exceptions for small quantities (up to 70 ounces total) of medicinal and toilet articles carried in the passenger's luggage and certain smoking materials carried on the passenger's person. For further information, each passenger should contact the relevant airline representative(s) on their itinerary. Restrictions on hazardous materials are listed <http://www.tsa.gov/traveler-information/prohibited-items>.

**INSECTICIDE NOTICE:** Some countries require insecticide spraying of aircraft prior to a flight or while you are on the aircraft. We recommend that you refer to the Department of Transportation's list of airports in countries that require airlines to treat the passenger cabin with insecticides prior to the flight or while on the aircraft available at <https://www.dot.gov/office-policy/aviation-policy/aircraft-disinsection-requirements>.

**BAGGAGE & FEES:** Additional fees for baggage may apply. Please contact your airline or refer to its website for detailed information regarding its checked baggage policies. On average, international flights from the USA allow one piece of checked luggage, not exceeding 50 pounds, plus a carry-on piece not exceeding 15 pounds; however, we always recommend that you check your airline's policy just before departure, as luggage limitations are always subject to change. There may also be luggage and weight restrictions for your destination and that information will be forwarded to you with your pre-departure material and also be listed on your final documents.

**LUGGAGE ALLOWANCES ON INTERNAL FLIGHTS:** Your journey includes internal flights aboard light aircraft which are designed with a maximum luggage allowance; this is closely monitored by the flight operators for safety reasons. You are allowed one carry-on and one piece of luggage, total weight. **44.092 Lbs.** (20 kg's) per person including camera equipment.

**PERSONAL WEIGHT ALLOWANCES ON INTERNAL FLIGHTS:** If your personal weight exceeds **85 kilos (187 lbs.)** it may be necessary to purchase an extra seat and your Classic Escapes Operations Manager will contact you should this be necessary.

## TRIP DETAILS

**ACCOMMODATIONS:** You will marvel at the wonderful accommodations provided throughout your tour. All rooms have private bathroom facilities and air conditioning and/or fans unless otherwise specified. All rates are based on double occupancy. Most rooms are twin-bedded, but king-size beds are occasionally available and should be requested in advance. The Accommodations listed in this itinerary are correct at the time of writing, but on rare occasions may be substituted for a different property of comparable quality.

**MEALS:** All meals as specified in the itinerary. Please notify us if you have special dietary needs or requests, and we will do our best to accommodate.

**WATER:** It is always advisable to drink bottled and/or filtered water when traveling overseas. Safe drinking water will be provided to travelers free of charge in vehicles and during meals.

**PHOTOGRAPHY:** The Company reserves the right without further notice to make use of any photograph or video taken during the tour by our photographers without payment or permission. We guarantee that no photographs of a compromising nature will be used.



**GUIDES:** If one of Classic Escapes' guides is unable to take a trip due to circumstances out of our control (i.e., illness, etc.), we reserve the right to substitute with another guide.

**TOUR ITINERARY:** To the best of our knowledge the itinerary is correct at the time of printing. We cannot be held responsible for any inaccuracies or changes that may occur after printing.

**HEALTH AND SPECIAL REQUIREMENTS:** You must have the proper immunizations and health screenings and the required documentation of such immunizations and screenings before travel. It is your responsibility to ensure you are aware of any health requirements, health advisories, or health travel restrictions applicable to your travel destinations and to ensure that you carry all necessary vaccination documentation. Classic Escapes is not responsible for providing you with this information. Travel carriers and local authorities at travel destinations may require specific testing prior to boarding and/or upon arrival at your destination, including, but not limited to, a temperature check as a result of the COVID-19 pandemic. You may be denied entry onto your carrier and/or entry upon arrival at your destination or be required to self-quarantine at your destination and upon your return to the United States. You must comply with local government regulations. Any additional costs are your responsibility. Check the State Department Web site <http://travel.state.gov>, for relevant information relating to travel to specific destinations, and the Center for Disease Control <http://wwwnc.cdc.gov/travel/> relating to health issues related to travel.

You must be in good physical and mental health. It shall be your duty to inform us if you have any medical condition that may affect your ability to enjoy and pursue fully the services of Classic Escapes. By registering for a Classic Escapes service/program, you certify that you do not have any mental, physical, or other condition or disability that would create a hazard for yourself or others.

**COVID-19 ACKNOWLEDGEMENT:** In order to participate in one of our tours, travelers must certify that they have not recently been treated for, nor are aware of any physical or other condition or liability that would create a hazard to themselves or other members of the tour and agree to comply with all health protocols as directed by Classic Escapes and their representatives during their journey. Travelers must maintain suitable physical distancing and frequently wash or sanitize hands throughout their journey. Travelers are required to follow guidelines established by local regulations which may include wearing masks in vehicles, indoor areas, and any outdoor areas where physical distancing is not possible. Explicit instructions will be provided by our guide on arrival. Noncompliance with these procedures will result in the suspension of the journey. Travelers voluntarily assume all risks and related expenses in the event that they or any member of their traveling party require testing, quarantine, or become infected with COVID-19. Classic Escapes will endeavor to provide assistance wherever possible.

**TRAVEL INSURANCE:** For your protection, we strongly recommend that you purchase trip cancellation and travel accident insurance. However, no representation or description of the insurance made by Classic Escapes to you constitutes a binding assurance or promise about the insurance. Classic Escapes is not an insurance company and has no responsibility for the submission, payment, or adjustment of any insurance claims. Any insurance claims that may fall under the relevant travel insurance policy must be submitted to the insurance company identified in the policy. We recommend the following service – please visit the website to enroll: <http://www.travelguard.com/classicescapes/>. Any questions about what travel insurance does or does not cover should be addressed directly to the travel insurance company, Travel Guard at 1-866-385-4839 and reference ARC #71298. If you decline insurance coverage, you will personally assume full responsibility for any financial loss associated with your travel arrangements, and you could lose your travel investment and/or have to pay more money to correct the situation. **THE PURCHASE OF TRAVEL INSURANCE IS HIGHLY RECOMMENDED ON ALL TRIPS.**

**EMERGENCY EVACUATION COVERAGE:** For the convenience of our travelers, Classic Escapes provides a complimentary Medical Insurance Plan during your trip via Travel Guard Group, Inc. This includes:

- Emergency evacuation insurance up to \$100,000.
- Up to \$25,000 in medical, and up to \$500 in dental expense coverage subject to the terms and limitations of the insurance policy.
- 24-hour worldwide travel and medical assistance.

Medical Plan (926801)

Please click here to view the complete coverage of details.

[https://webservices.travelguard.com/Product/FileRetrieval.aspx?CountryCode=US&StateCode=AL&ProductCode=926801&PlanCode=NW&FileType=PROD\\_PLAN\\_GM](https://webservices.travelguard.com/Product/FileRetrieval.aspx?CountryCode=US&StateCode=AL&ProductCode=926801&PlanCode=NW&FileType=PROD_PLAN_GM)

## **TERMS & CONDITIONS**

**TOUR OPERATOR:** Classic Escapes acts as a tour operator/travel agent only. Classic Escapes does not own, operate, manage, or control any independent suppliers of services and is not liable for their acts or omissions. Classic Escapes' obligations to you are to make travel bookings on your behalf and to arrange relevant contracts between you and other travel service providers. We have no



responsibility for these services, nor do we have the authority to make any warranty or representation regarding their standard. Requests cannot be guaranteed. All bookings are subject to the terms and conditions and limitations of liability imposed by these travel service providers. You understand that your legal recourse is against the specific provider, not Classic Escapes. Conditions can change rapidly in a country at any time. It is your responsibility to check the USA Government Travel advisories for your intended destination at <https://travel.state.gov/content/travel.html>.

**RESPONSIBILITY OF THE COMPANY:** We always do our best to make sure your travel arrangements are satisfactory. However, Classic Escapes and its employees, shareholders, subsidiaries, affiliates, officers, directors, successors, agents, and assigns do not own or operate any third-party entity that provides goods and services for your travel, including without limitation lodging facilities, airline, vessel, motorcoach, or other transportation companies, local ground operators, providers, food service providers, etc. All such persons and entities are independent contractors and are in no way affiliated to Classic Escapes. We are not liable for any delays or additional costs incurred by the Traveler as a result of any actions or occurrences by any of the foregoing third party entities.

**LIABILITY:** Classic Escapes is not liable for any negligent or willful act or failure to act of any travel service provider or of any third party.

Because Classic Escapes does not have the right to control the operations of such travel service provider or any third party, you agree that Classic Escapes is not liable for any personal injury or property damage which may arise out of these services. Classic Escapes hereby disclaims any liability whether based on contract, tort, strict liability or otherwise, including without limitation liability for any direct, punitive, special consequential, incidental or indirect damages, in connection with the goods or services provided by any supplier booking through Classic Escapes, including without limitation liability for any act, error, omission, injury, loss, accident, delay or irregularity which may be incurred through the fault, negligence, willful acts, omissions or otherwise of such travel service provider or any third party, or their respective employees, agents, servants, or representatives, including, without limitation, their failure to deliver or their partial or inadequate delivery of services, their cancellation and refund policies, fuel increases, bankruptcy or cessation of operations and other matters outside of Classic Escapes' control, and you hereby exonerate Classic Escapes from any liability with respect to the same.

**FORCE MAJEURE:** Classic Escapes will not be in breach of these terms and conditions or otherwise be liable to you, for any failure or delay in performing an obligation under this Agreement that is due to any of the following causes, to the extent beyond its reasonable control: acts of God, accident, riots, war, terrorist act, illness, disease, epidemic, pandemic, quarantine, civil commotion, breakdown of communication facilities, including web host and internet service provider, breakdown or malfunction of equipment, destruction of or serious damage to facilities, natural catastrophes including, but not limited to extreme weather events, floods and volcanic eruptions, governmental acts or omissions, changes in laws or regulations, national strikes, fire, explosion, generalized lack of availability of raw materials or energy, and any other unforeseen circumstance which is beyond the control of Classic Escapes. THE PURCHASE OF TRAVEL INSURANCE IS HIGHLY RECOMMENDED ON ALL TRIPS.

**REFUSAL OF SERVICE:** Service providers reserve the right to refuse service to travelers at their sole discretion, including, without limitation, if the traveler: (i) lacks proper documentation for the country of destination; (ii) has a contagious disease; (iii) is under the influence of alcohol, drugs, or narcotics; and/or (iv) manifests disruptive and/or unruly behavior. Classic Escapes assumes no liability for the acts of the service provider in refusing service.

**ELECTRONIC OR HANDWRITTEN SIGNATURE:** Both parties agree that you may acknowledge and agree to these Terms: (i) electronically; (ii) by handwritten signature; (iii) by any other electronic means, including, without limitation, via email acceptance of these Terms; or (iv) by your implied consent deemed via your actions, which shall include without limitation the payment of the invoice in part or in full or your use of the services provided by Classic Escapes or any other travel supplier related to your booking. All such means will be deemed to constitute effective acknowledgment and execution of this Agreement and shall be sufficient to bind the parties to the terms and conditions of this Agreement.

**RESERVATION OF RIGHTS:** We reserve the right, in our sole discretion, to change these Terms and Conditions at any time. Updated versions of the Terms will be provided to you, will be posted on our website, and are effective immediately on posting.

**GOVERNING LAW:** The construction, validity, and performance of these Terms and any disputes between the parties shall be governed by and construed according to the laws of the State of New York, without giving effect to its conflict of law principles, and any federal laws applicable therein. Both parties submit to the exclusive jurisdiction of the courts of the State of New York with respect to any legal proceedings relating to these Terms.



## CHARTER AIR LUGGAGE RESTRICTIONS

**It is of vital importance that all guests traveling to Botswana strictly adhere to the luggage limits and regulations as stipulated below.**

**Please note:**

<b>LUGGAGE WEIGHT LIMIT PER PERSON *</b>	<b>44.092 Lbs. (20 kg's)</b> – total weight inclusive of luggage and hand luggage/camera equipment.
<b>LUGGAGE TYPE</b>	Soft sided bags – no hard-shelled bags, wheels or frames allowed.
<b>LUGGAGE DIMENSIONS**</b>	10 inches wide x 12 inches high x 24 inches long.

\*This is the total weight including both luggage and hand luggage/camera equipment. This is a safety requirement due to the sensitive weight and balance checks on the small aircraft and must be strictly adhered to. Travelers who require additional luggage must pre-book and pay for this on confirmation of the reservation. We would like to remind you that complimentary laundry services are available in all camps and lodges.

\*\*Please keep in mind that the baggage compartments on most of the light aircraft are only 25cm (10 inches) high, so the pilots must have the ability to manipulate the bag into the compartment.



### HANDLING OF INCORRECT LUGGAGE ON ARRIVAL

Guests arriving in Botswana, who have not adhered to the luggage guidelines as per above, will NOT be able to depart on the scheduled charter. They will be given the option to book a private charter at additional costs to be paid directly prior to departure and subject to the availability of aircraft at the time of booking these flights. No refunds on the costs paid for scheduled charters which were missed due to their incorrect luggage and or accommodation not provided due to this delay will be provided. In all cases, additional arrangements for transfers, overnight accommodation in Maun or Kasane and meals are for the guests own account.

### ASSISTANCE WITH BAGGAGE PRIOR TO ARRIVAL

Should guests be travelling with the incorrect luggage and require assistance with storage (which we offer at no additional cost) or transportation to their point of departure from Botswana (transportation costs apply), this can be arranged provided this has been bought to our attention prior to their arrival in Botswana, preferably at the time of final booking confirmation.



## RESERVATION FORM:

LISA & TOM TEUFEL

SOUTHERN AFRICA

23AFF0916/TEUFEL

Trip to Southern Africa for Lisa & Tom Teufel starting on September 16, 2023. See Your Journey At A Glance for all costs and payments due.

Final payment due date is June 13, 2023

Please make check payable to CLASSIC ESCAPES and mail to 191 W Poplar Street, Floral Park, NY 11001

OR

Charge deposit to ☐ MasterCard ☐ Visa ☐ American Express ☐ Discover  
(Credit Card Authorization form needs to be completed and returned to the above address)

1) NAME (As appears on passport): ☐ Mr. ☐ Mrs. ☐ Ms. \_\_\_\_\_ Date of Birth (M/D/Y) \_\_\_\_/\_\_\_\_/\_\_\_\_

Passport No. \_\_\_\_\_ Green Card No. \_\_\_\_\_ Expiration Date \_\_\_\_\_ Nationality \_\_\_\_\_

2) NAME (As appears on passport): ☐ Mr. ☐ Mrs. ☐ Ms. \_\_\_\_\_ Date of Birth (M/D/Y) \_\_\_\_/\_\_\_\_/\_\_\_\_

Passport No. \_\_\_\_\_ Green Card No. \_\_\_\_\_ Expiration Date \_\_\_\_\_ Nationality \_\_\_\_\_

STREET ADDRESS: \_\_\_\_\_

CITY: \_\_\_\_\_ STATE: \_\_\_\_\_ ZIP: \_\_\_\_\_

PHONES: HOME: ( ) \_\_\_\_\_ OFFICE: ( ) \_\_\_\_\_ MOBILE: ( ) \_\_\_\_\_

E-MAIL ADDRESS: \_\_\_\_\_ FAX: ( ) \_\_\_\_\_

**A copy of your passport must accompany this form to confirm reservation. Upon receipt of your signed reservation form, passport copy and deposit we will reserve your spot on the tour. Passport must be valid for at least 6 months after the return of your trip and have six consecutive blank pages in the visa section.**

☐ I/we certify that I/we have not recently been treated for, nor am I/we aware of any physical or other condition or liability that would create a hazard to myself or the other members of this tour.

All rates quoted are based on tariffs and value of foreign currencies in relation to the U.S. dollar in effect as of March 20, 2023 and are subject to change. Cancellation penalties applicable as outlined on Conditions of Travel. **WE STRONGLY RECOMMEND THAT YOU OBTAIN TRAVEL INSURANCE. RESERVATIONS ARE ACCEPTED SUBJECT TO TOUR CONDITIONS AND WILL BE CONFIRMED ONLY IF ACCOMPANIED BY COMPLETED FORM SIGNED BY THE TOUR PARTICIPANT(S).**

SIGNATURE: \_\_\_\_\_ DATE: \_\_\_\_\_

SIGNATURE: \_\_\_\_\_ DATE: \_\_\_\_\_

CLASSIC ESCAPES INC.  
191 W Poplar Street  
Floral Park, NY 11001  
Tel: 718-280-5001  
Fax: 718-204-4726

(We recommend that you keep a copy of your selections as noted above for your future reference)

LISA & TOM TEUFEL ~ SOUTHERN AFRICA  
SEPTEMBER 16 TO OCTOBER 3, 2023



191 W Poplar Street, Floral Park, NY 11001  
T: (718) 280-5000; (800) 627-1244  
F: (718) 204-4726  
E: info@classicescapes.com

CREDIT CARD PAYMENT AUTHORIZATION

*Please Note: If you wish to charge your deposit to Visa, MasterCard, American Express or Discover, this authorization form MUST be completed and returned to us along with your reservation form before we can process your application.*

I authorize (**Classic Escapes Inc.**) to charge my VISA/MASTERCARD/DISCOVER/AMEX listed below:

Name appearing on credit card.

Card number

Expiration date

Card Verification Number\*

Card Type

Billing address of credit card

Amount of transaction

Services rendered/Items purchased.

Phone number

Signature

Date

**\*How To Locate Your Card Verification Number:**

(**Visa, MasterCard, Discover:** Locate the credit card number on the back of the card above the signature box. Enter the 3-digit number which follows the credit card number. **American Express:** Enter the 4-digit number found directly above and to the right of the credit card number.)

I understand that all rates quoted on this tour I'm making a payment on are based on tariffs and value of foreign currencies in relation to the U.S. dollar in effect as March 20, 2023 and are subject to change. Cancellations are only effective on receipt of written notification. The per person cancellation penalties are repeated below.

**CANCELLATION:**

- Deposit once made is non-refundable.
- 95 days to 76 days prior to departure (June 13 to July 2, 2023), 25% refund is possible.
- 75 days or less prior to departure (July 3, 2023), no refund is possible.

These cancellation fees are also in addition to any fees imposed by airlines.

PLEASE NOTE: At times, our bank requires photocopy of credit card (both sides) and driver's license or document showing signature of cardholder, in order to process the charge. While it is not required at this time that you include these materials with your deposit, if our bank requests it, we will contact you for these copies.