



YOU ARE CORDIALLY INVITED TO JOIN THE  
**TOLEDO ZOO**  
ON A WILDLIFE & PRIMATE SAFARI TO  
**UGANDA**  
*PRIMATE SAFARI TO "THE PEARL OF AFRICA"*  
NOVEMBER 1 TO 11, 2025



191 W Poplar Street, Floral Park, NY 11001  
T: (718) 280-5000; (800) 627-1244  
F: (718) 204-4726  
E: [info@classicescapes.com](mailto:info@classicescapes.com)  
W: [www.classicescapes.com](http://www.classicescapes.com)

For more information, find us on:  
 [facebook.com/Classic.Escapes.inc](https://facebook.com/Classic.Escapes.inc)  
 [instagram.com/classicescapesinc](https://instagram.com/classicescapesinc)

## UGANDA OVERVIEW

---



Discover Uganda - known as the Pearl of Africa by British explorers - a county noted for outstanding beauty and diversity - from the ethereal Mountains of the Moon to open savannahs and impenetrable forest. Uganda is the center of Africa's own "Great Lakes" system. All that water has produced a country of verdant landscapes and thick forests, while the dark, rich soils support all manner of life. It is in these densely packed (often called impenetrable) forests that Uganda's most famous residents reside - the awe-inspiring mountain gorilla. These powerful and intelligent animals will often view you with as much scrutiny and curiosity as you are viewing them. It is an incredible reminder that there are still realms where humans are the visitors, and visitation is a privilege. Here is one such place.



## YOUR NATURALIST GUIDE: ALLOYS BATSINDUKA

Alloys was born in Uganda to refugee parents and moved to Kenya at an early age. He completed his education in Kenya, where he was an active scout, leading a contingent to the 1982 Scout Jamboree in the UK. He earned a Diploma in Tour Guiding and Administration from Utalii College in 1988. Alloys began his career in tourism working for 14 years as a customer relations agent and moved on to guiding as a freelance guide, managing groups from around the world, including special groups like Make-A-Wish USA. He has trained hospitality personnel in Rwanda and holds leadership roles in various social and alumni groups.

He stays active through sports, participating in events like the Standard Chartered Marathon, and is a member of the Ingenzi social and sports group. Married for more than two decades, Alloys has three children and three grandchildren. His love of the East African people and his passion and knowledge about the flora and fauna of this part of Africa, make him an ideal guide to enhance your safari experience.



## YOUR ITINERARY

---

### DAY 1~ SATURDAY~NOVEMBER 1

#### USA/ EN ROUTE

Your journey begins as you board your overnight flight to Entebbe. (Meals Aloft)

### DAY 2 ~ SUNDAY~ NOVEMBER 2

#### ENTEBBE

Arrive at Entebbe International Airport where upon arrival, this evening you will be welcomed by your Classic Escapes representative and driver/ guides who will then accompany you to your charming hotel, where the rest of the day is at leisure. Tonight, enjoy a welcome dinner at your hotel.

*The Protea Hotel Entebbe is ideally located on the glistening shores of Lake Victoria and very close to Entebbe International Airport. The sleek and modern rooms are equipped with air-conditioning, balconies, flat-screen satellite television, refrigerators, safes, executive workstations, and seating areas. The Tides Restaurant serves full breakfast; lunch and dinner with specialties including fresh Tilapia and Nile Perch. The Terrace, with its own special ambiance and superb lake views, is the perfect place to kick off a decadent evening out or simply just to relax and enjoy the sunset with an aperitif before dinner.*

Overnight at the PROTEA HOTEL. (Meals Aloft, Welcome dinner) <https://www.marriott.com/hotels/travel/ebben-protea-hotel-entebbe/>



### DAYS 3/4~ MONDAY/TUESDAY ~ NOVEMBER 3/4

#### ENTEBBE/KIBALE FOREST NATIONAL PARK

Early this morning board your flight to Kasese, the gateway to the enchantment of Kibale Forest National Park. With ancient trees up to 180 feet in height, Kibale is a wonderful place to experience the extraordinary diversity of a tropical rainforest. The park is comprised of pristine lowland tropical rain forest, montane forest, and mixed tropical deciduous forest as well as grassland and swamp.

Your stay will include forest and swamp walks led by excellent local guides. You may see Crowned Crane (Uganda's national bird) nesting and feeding site, or you may ascend the tree-house to the viewing platform to see the exotic-looking Dura River screw palms. You will certainly be more than impressed by the grandeur of the forest and the abundance of exotic life forms in this thriving and ancient environment. Occasionally, at clearings, buffalo and antelope can be viewed. Walking is not difficult, as paths have been made in the forest. The sightings of birds in the forest are quite impressive - there are at least 325 species, many of which are found nowhere else.

In spite of the impressive bird life, the stars of the show here are the primates. You may find families of chimpanzees chattering and swinging through the ancient forest canopy. Intelligent and lively, the sociable chimpanzee shows an ability to learn as well as act instinctively. The chimpanzee is the animal that resembles man most closely. It shares familiar human characteristics such as problem-solving abilities, a high degree of parental care, and a variety of facial expressions. They use and even make tools; for example, they use sticks as weapons and to dig out the contents of insect nests. Also, sick chimps have been seen eating plants that have medicinal properties. Many



primatologists now attribute culture to chimpanzees, noting learned variations in such skills and habits among different groups. Chimp behavior could provide a clue to that of our early ancestors. Although incapable of speech beyond their own simple vocalizations, captive chimpanzees have been taught to communicate in a language using visual rather than verbal symbols. Chimpanzees suffer from many human diseases, including malaria. Because of their close evolutionary relationship to man, they are often used for medical and behavioral experimentation.

Fully-grown chimpanzees usually measure up to 5 ft tall and weigh about 150 lbs., they have an arm spread of up to 9 ft and are much stronger than humans. They are covered with long, black hair over most of the body and have naked faces ranging in color from nearly white to nearly black. Chimpanzees spend much of their time on the ground, where they walk on all fours, using the soles of their feet and the knuckles of their hands; they can also stand on two legs and sometimes walk this way for short distances. They climb trees in pursuit of food and for nesting and can swing from branch to branch. Their diet consists largely of fruit and other plant matter, but they also hunt and eat small animals, including monkeys. Chimpanzees move about the forest in bands of varying composition, usually numbering six to ten individuals. The males of a group engage in dominance contests involving displays of screaming and stamping. Family groups consist of mothers and offspring; females mate with several males during their fertile periods. A single infant is born every three to eight years. Under ideal circumstances, chimpanzees may live 50 years.



Your program includes an afternoon visit to the Bigodi Wetland Sanctuary located in Magombe Swamp. Recognized for its extensive array of biodiversity, you can search for primates such as the red colobus monkey, baboon, black and white colobus, blue, grey cheeked, mangabey, red tailed, and L'Hoest monkeys. Animals such as sitatunga, mongoose, bush pig, otter, bushbuck also visit the swamp and at times chimpanzees as well. This is a prime area for birdwatching with 138 species, but the prized viewing will be the Great Blue Turaco, if you are lucky to see it. Look for the White-spotted Flufftail, Yellow-spotted, Hairy-breasted, Yellow-billed Barbets, Western Nicator, Grey-winged Robin-chat, White-tailed Ant-thrush, Brown-backed Scrub-robin, Black-and-white Shrike-flycatcher, Brown-throated Wattle-eye, Superb Sunbird, Brown-crowned Tchagra, Bocage's Bush-shrike, Black Bishop, White-breasted Nigrofinch and Black-crowned Waxbill among others.



You will also visit the community and learn how they benefit from protecting the swamp and the tourism the swamp attracts. The Bigodi Women Group can show you some of their handicrafts, derived from the swamp – raffia, phoenix-palm leaves, etc.

Your accommodations for the next two nights will be at the charming Primate Lodge located in the heart of Kibale Forest National Park. It is a comfortable camp offering a great base from which to view the range of wildlife in the forest and park. The cottages are all set on raised wooden platforms and each has a private verandah offering views over the forest. All rooms have ensuite bathrooms with showers. There is a tree house high in the canopy for those with a sense of adventure! The restaurant serves both local and international cuisine and the adjacent bar and lounge areas are excellent places to relax after a day's activities.

Overnights at the PRIMATE LODGE. (B,L,D Daily)  
<https://ugandalodges.com/primate/>



**DAYS 5/6~WEDNESDAY/THURSDAY ~ NOVEMBER 5/6**  
**KIBALE FOREST NATIONAL PARK/QUEEN ELIZABETH NATIONAL PARK**

You now depart for your drive to Queen Elizabeth National Park, Uganda's second largest national park at 764 square miles. Your journey offers a panoramic view over rolling, cultivated countryside.

You will enjoy two full days of wildlife viewing in Queen Elizabeth National Park, a world biosphere reserve (UNESCO, 1979), which includes a RAMSAR wetland site. The checklist of mammals here includes 66 species. The larger mammalian fauna of the park is characterized by a few species furnishing exceptionally high biomass. During the late 1960s, the biomass densities recorded from the park exceeded those published for any wildlife community anywhere in the world. To date, the Park's main biomass contributors include hippopotamus, lion, leopard, elephant, buffalo, Uganda kob, topi, bushbuck, waterbuck, rare giant forest hog, armadillo, porcupine, pangolin, bush pig, warthog, hyena, and civet. Birdlife is also abundant. Queen Elizabeth National Park is a classified Important Bird Area (IBA) and has 568 of Uganda's 1,017 species of birds (over a quarter of Africa's bird species), more than any other park in Africa.



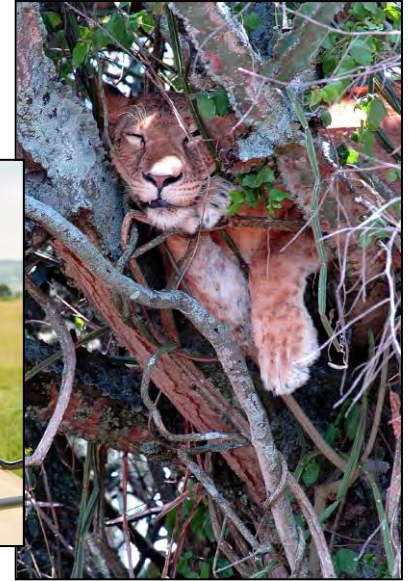
Your game drives will afford you an opportunity to perhaps watch the entertaining antics of the Ugandan kob; although still numerous in western Uganda, the kob is far less common in other areas of East Africa. It was once found in western Kenya and northern Tanzania but has not been seen there in recent years. The kob is similar in appearance to the impala, but the two species are not closely related. Horns occur only in males, and though lyre-shaped, they are shorter, thicker, and ringed almost to the tip. Kob often associate with larger animals such as hippos, buffalos, topis, and hartebeests. These animals help keep the grass short, as the kob prefers. The social structure of the kob is based on small herds that come together into larger groups of up to 1,000 animals.



Schedules, accommodations and prices are accurate at the time of writing. They are subject to change.



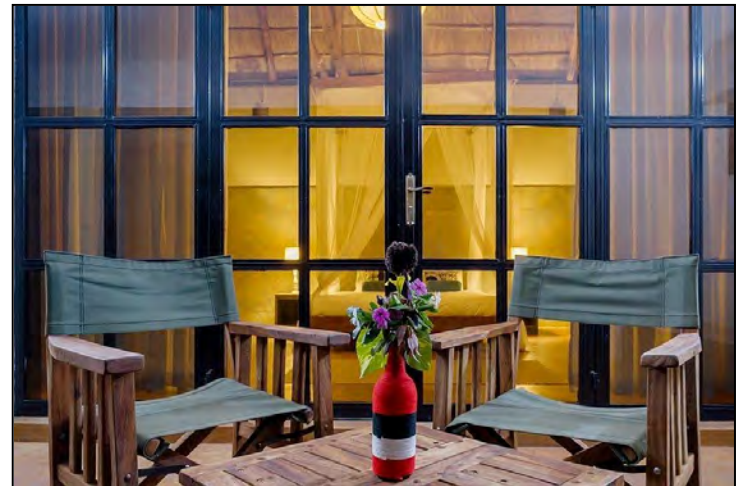
These large groups will contain 30 to 40 breeding males that hold territories. Like many other antelope species, breeding only occurs within areas controlled by an individual territorial male. But the kob, unlike other antelopes, has taken the system a step further by establishing permanent breeding grounds, some of which have been in continuous use for at least 50 years. Similar to an impala, the male kob avidly defends his harem against other male intruders. It's not unusual to see a fight break out and the victor the happy possessor of the females.



Next day, get set for a full day of activities. Your morning will begin with a game run with the researchers looking for lions. You will hear about the work they do with the lions and will look for them by telemetry. After

lunch, you will embark on a two-hour launch trip on the Kazinga Channel and Lake Edward to view hippo, elephant, buffalo and so much more as they come down to drink. Nile crocodile, African rock python, monitor lizard, and sometimes snakes can also be sighted. The boat ride will also afford excellent birding opportunities.

*You will spend the two nights at Elephant Plains, a luxury lodge located on the most spectacular viewpoint in Queen Elizabeth National Park. Perched high upon the western escarpment of the Albertine Rift, the lodge offers stunning views stretching for miles over the huge open grasslands to Lake George. The lodge has six spacious double/twin en-suite cottages with large private verandahs and huge glass windows to take advantage of the incredible views. Two family cottages offer accommodation in two separate en-suite bedrooms. All the cottages have large bathtubs as well as showers and are spaced out along the hilltop offering privacy. Rooms overlook Lake Kikorongo with views of elephants and buffaloes coming to drink. The main area has a large lounge with comfortable couches and intimate seating areas. The bar has a wine cellar and bistro-style seating, while the spacious restaurant has an outside dining deck with 270-degree views. Elephant Plains uses solar-powered electricity to minimize the impact on the environment and is constructed with local materials.*



Overnights at ELEPHANT PLAINS LODGE. (B,L,D Daily) <https://ugandalodges.com/elephant-plains/>



**DAYS 7/8/9~FRIDAY/SATURDAY/SUNDAY ~ NOVEMBER 7/8/9**

**QUEEN ELIZABETH NATIONAL PARK/BWINDI IMPENETRABLE FOREST NATIONAL PARK**

Return to the Kasese airport this morning (8:15 am- 9:15 am) for your flight to the enchanting Bwindi Impenetrable Forest National Park, a designated UNESCO World Heritage Site, a true African “jungle”, so called because of the dense undergrowth, vines, and other vegetation which make it almost 'impenetrable'. It is both mysterious and awesome. The lowland rainforest and montane forest vegetation constantly struggle to reach heights that will allow them to receive more light. Huge trees are festooned with creepers and parasitic plants such as mistletoe and orchids. Giant thickets of bamboo thrive in the humid atmosphere and, where sunlight breaks through, the elegant heliconia or lobster claw spreads its colorful petals.



At least 120 species of mammals make their home here in one of the richest ecosystems in Africa. Besides the 10 species of primates, elephant, bush pig, giant forest hog, many species of bats and rodents, at least 346 species of birds including rare forest birds, 14 species of snakes, 27 species of frogs and toads, 6 chameleons, 14 lizards, skinks and geckos, and at least 202 species of butterflies are resident in the Forest. There are also several endangered species of birds with limited ranges.



On your first day here, you will visit the Batwa community to gain an insight into the 4,000-year-old culture of the Batwa pygmies who live on the outskirts of Bwindi. The Batwa were the original ancient dwellers of the forest. The first records of pygmies were made by the Egyptians over 4000 years ago. They described short stature people living near the “Mountains of the Moon” extolling their abilities as dancers and story tellers. Homer and Aristotle also made mention of them. They lived peacefully, kept their traditional ways leaving a small footprint of their presence in the ancient forests. There is the saying “A Batwa loves the forest as much as he loves his own body.”

In 1991, it all changed – the government evicted them (most without any compensation) when the Bwindi Impenetrable Forest and Mgahinga Gorilla Parks were established – the Batwa people became people without a home, without land, people without rights. The Batwa Pygmies were now people without an identity reduced to begging, poaching and stealing. The Batwa Development Program is a community organization that supports the Batwa at becoming self-sufficient. The organization owns land where the pygmies practice and preserve their ancient traditions – and share them. Inspiring Batwa elders lead tours that reveal their use of medicinal plants, hunting/gathering customs, and traditional homes, and even let you try a bow and arrow.



Ugandan authorities are fiercely protective of this natural treasure. **Your group will have the opportunity for two treks per person to view the mountain gorillas during your stay. One trek is included, and you can elect to purchase a second at an additional cost of \$800 per trek, currently.** After breakfast on the second day, you will proceed to the nearby park headquarters and meet with your excellent local guides and porters, who will carry your personal items and assist you during the trek. You'll start your trek in tea plantations and enter the forest from there. You will surely understand the struggle between protecting the forest for the gorillas and wildlife, versus the need for the local population to eke a living out of the area. Every inch of land is cultivated in this area, but it is now illegal to cut any more of the forest, thus it is protected.



Gorillas here live on the slopes of ancient volcanoes in high-elevation forests. Dense bamboo thickets give way to a combination of large meadows and dense herbaceous vegetation zone highlighted by moss-laden hagenia and hypericum trees. Your treks will take you through a fairyland forest, an experience that in itself is thrilling. As you venture forth, you will spot evidence that the gorillas have been present. The treks can last from four to seven hours (or more) depending on when you spot the gorillas. There is an hour limit to the time you spend with these majestic creatures once you spot them. Tracking gorillas through misty, seemingly impenetrable forests can be an exhausting process as the paths are often slippery, entangled, and wet. However, this effort is quickly forgotten the minute you encounter these beautiful creatures. They instantly capture your full attention with their acrobatic antics and cacophony of grunts, screeches, and chest-beating.



Without a doubt, your first impression of the dense jungle will be its almost audible silence. Jungle creatures are very, very shy, but, as you pick your way along the trail, through the dense undergrowth, you'll realize that the jungle is alive. Thousands of living organisms are discreetly watching and waiting as you pass through their home and, from time to time, the complete tranquility will be shattered by a darting forest bird or group of chattering monkeys leaping through the stands of ancient trees, disturbing the secretive residents and setting up a chain reaction. Now, the ever-wary jungle comes to colorful and noisy life for a moment, until silence reigns again. As you walk among the shadows of the leafy canopy, this rainforest reveals the smells and sounds of Africa, just as it has been for centuries. Your guide will take you along river trails with delightful waterfalls, up steep slopes and into forest clearings in search of these gentle giants. Although the hike is physically demanding the beauty of the forest and surrounding scenery make the trekking worthwhile. Once the gorillas are located all fatigue is forgotten, as the experience is often described as being the most profound natural history experience in the world. *Approximately 98% of the gorilla treks are successful but there is no guarantee that you will see the gorillas.*



*Mahogany Springs Lodge is located on the northern side of Bwindi Impenetrable Forest its own private section of the Munyanga River, offering privacy and serenity blended with optimal comfort in a spectacular setting. The lodge is built in a way that one can easily catch a glimpse of the gorillas crossing in and around the land of the lodge and even feeding on the various plants near the riverside. Each spacious suite has two double beds and en-suite facilities. The cottage has its own private elevated terrace with chairs, a table, and stunning views. Enjoy afternoon tea on the terrace or sundowners by the riverside.*

Overnights at the MAHOGANY SPRINGS LODGE. (B,L,D Daily) <http://www.mahoganysprings.com/>



#### **DAY 10~MONDAY~ NOVEMBER 10**

##### **BWINDI/ENTEBBE/EN ROUTE**

Bid farewell to the beautiful forest as you board your flight to Entebbe ( 8:35 am-11:25 am) where upon arrival you will be transferred to your dayroom at the PROTEA HOTEL. Later tonight, return to the airport to connect with your flight back to the United States. (B,L)

#### **DAY 11~ TUESDAY~ NOVEMBER 11**

##### **USA**

Today you arrive home, bringing with you all the wonderful memories of Uganda. (Meals Aloft)



## OPTIONAL PRE-EXTENSION TO MURCHISON FALLS



### DAY 1~TUESDAY~ OCTOBER 28

#### USA/EN ROUTE

Your journey begins as you board your overnight flight to Entebbe. (Meals Aloft)

### DAY 2 ~ WEDNESDAY~ OCTOBER 29

#### ENTEBBE

Arrive at Entebbe International where upon arrival, this evening you will be welcomed by your Classic Escapes representative and driver/guides who will then accompany you to your charming hotel, where the rest of the day is at leisure.

*The Protea Hotel Entebbe is ideally located on the glistening shores of Lake Victoria and very close to Entebbe International Airport. The sleek and modern rooms are equipped with air-conditioning, balconies, flat-screen satellite television, refrigerators, safes, executive workstations, and seating areas. The Tides Restaurant serves full breakfast; lunch and dinner with specialties including fresh Tilapia and Nile Perch. The Terrace, boasting a unique ambiance and breathtaking lake views, offers an ideal spot to unwind and savor the sunset with an aperitif.*

Overnight at the PROTEA HOTEL. (No Meals)



**DAYS 4/5/6~ THURSDAY/FRIDAY/SATURDAY ~ OCTOBER 30/31~ NOVEMBER 1  
ENTEbbe/MURCHISON FALLS**

Enjoy a relaxed morning before boarding your flight to Murchison Falls National Park, one of the most spectacular in Uganda, and indeed in the whole of Africa. This is the largest game park in the country (3,840 sq.km.) and has the most intense concentration of animals along the River Nile. The River divides the park into the north and south sectors and forms the falls where it flows over the western Rift Valley escarpment. Here are the awe-inspiring Murchison Falls, where the River hurls itself through a narrow crevice and then plunges 130 feet in one breathtaking leap. Before the Murchison Falls themselves, in the eastern sector of the Park, are the Karuma Falls where the Nile cascades over 14 miles of rapids in a breathtaking sight. This is some of the most exciting white water in Africa.



While here you will embark on an unforgettable launch trip on the Nile up to the Falls with abundant game viewing along the way. Elephant, hartebeest, giraffe, buffalo, crocodile and countless antelopes and birds (including the rare Shoebill Stork) can be admired at the water's edge as the launch glides along. Fish in the Nile include Nile perch, Tilapia, and Tiger fish. Nile crocodiles are in abundance as are hippos and aquatic birds. The launch trip lasts about three hours. Afterward, drive to the top of the Falls for lunch and a chance to explore the area on a walk, offering excellent views of the falls where the Nile is forced through a 20-foot wide gap in the rocks then drops 145 feet over the escarpment. This is said to be the largest natural force of water in the world, creating what appears to be a boiling cauldron of water.



Also journey on a boat excursion up the Nile to the north side, followed by game drives in the northern section of the park. Murchison Falls National Park, with its variety of vegetation ranging from riparian forests and swamp lands to broad savannah, provides the opportunity to see many of the animals found in Uganda. This is where part of the movie *The African Queen* was filmed. Your game drive today may afford you views of elephant, giraffe, hippopotamus, leopard, warthog, lion, giraffe, aardvark, chimpanzee, pangolin, civet, buffalo, hyena, crocodile, oribi, Patas monkey, Uganda kob and baboon. The park is home to 450 species of birds including Pel's Fishing Owl, Pennant Winged Nightjar, Red-throated Bee-eater, and the magnificent Shoebill Stork.



*Twiga Safari Lodge is located on the bank of the river Nile in Mubaako Paraa opposite the Murchison Falls National Park. The lodge has eight elevated canvas tents, traditionally decorated in a rustic style, with en-suite bathrooms, spread out to ensure privacy and excellent views. The tents are doubly sun-sheltered with a papyrus roof, and made extra spacious with their large verandahs. Mornings are made complete with a wake-up call and a fresh pot of coffee on your verandah. The on-site restaurant and bar provide local meals and a range of beverages. Guests enjoy modern conveniences including Wi-Fi access and satellite television, while still remaining immersed in the natural surroundings.*

Overnight at the TWIGA SAFARI LODGE. (B,L,D Daily)  
<https://twigasafarilodge.com/>



### **DAY 7~ SUNDAY~ NOVEMBER 2 ZIWA RHINO SANCTUARY/ENTEBBE**

Today, you bid farewell to Murchison Falls and embark on a three hour journey to visit the Ziwa Rhino Sanctuary, where you'll have the chance to trek on foot in search of the elusive white rhinos. You will be able to spot the rhino and other species of wildlife and hopefully the Shoebill Stork.

Uganda used to be home to thousands of rhinos, but due to extensive poaching during the years of civil unrest, the last rhino was killed in 1982. Six southern white rhinos were introduced to Ziwa back in 2006. On June 24th, 2009, the first baby rhino in 28 YEARS was born in Uganda. The calf was born on Ziwa Rhino Sanctuary in Nakitoma to NANDI, one of the rhinos received from Disney Animal Kingdom. The male rhino was named Obama, because his father is Kenyan, and his mother is American. Since then, they have had 26 successful births, bringing the number to 32. Presently, Ziwa is the only place in Uganda where you can see rhinos in the wild.



Have lunch at Kabalega Diner, and continue with your drive to Entebbe (4 hours), to meet up with the rest of the group arriving today and continue with the rest of the program.

Overnight at the PROTEA HOTEL.(B,L)



## INCLUSIONS

---

- Light aircraft scheduled flights between Entebbe/Kasese/Kahihi/Entebbe.
- Flight between Entebbe/Muchison Falls on the pre-extension.
- Superior accommodations throughout as indicated or similar.
- Lion trekking at Queen Elizabeth National Park.
- Rhino tracking at the Ziwa Rhino Sanctuary.
- Batwa Experience.
- One permit to trek for the mountain gorillas in Uganda (\$800 per person/per permit, currently, for any extra permits).
- One permit to trek for chimpanzees in Kibale (\$250 per person, currently, for any extra permits).
- All meals while on safari in Uganda.
- Wildlife viewing in specially-designed 4-wheel drive safari vehicles, with open roof viewing hatches for wildlife viewing and photography. A window seat is guaranteed. Chimpanzee and gorilla trekking will be made on foot.
- Complimentary bottled water in vehicles.
- A specialist guide will be included with 10 travelers.
- A Toledo Zoo host with a minimum of 10 travelers on the main program and 8 on the extension program.
- Gratuities for baggage handling, hotel tips and all applicable hotel and lodge taxes.
- Gratuities for porters and trackers during gorilla and chimpanzee trekking.
- National Park and Reserves entry fees.
- Complimentary baggage tags and water bottle.
- Complimentary emergency evacuation insurance.

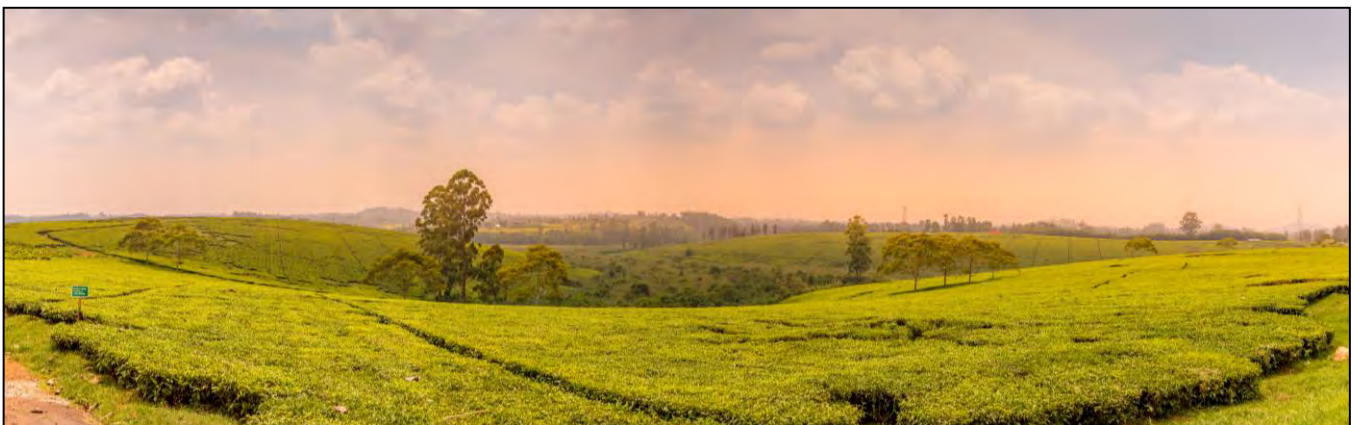
## EXCLUSIONS

---

- Round trip air transportation from USA. If you require assistance with air arrangements, contact Classic Escapes.
- Gratuities for driver/ guides and other conveyance attendants.
- Passport and visa fees and service charges for obtaining visas. Visas are currently required for Uganda.
- Excess baggage charges levied by airlines.
- Meals and beverages, other than specified.
- Laundry and other items of a personal nature.
- Personal and baggage insurance.
- Cost for anything not specifically mentioned in the listing above.

PLEASE NOTE THAT THE ITINERARY SEQUENCE IS CORRECT AT THE TIME OF WRITING, AND IS SUBJECT TO CHANGE.

**CAUTION:** Visitors to Uganda should be in excellent physical condition, without any heart problems and prepared to spend strenuous days in humid rain forests, steep terrain and high altitude. Waterproof hiking boots, trousers and long-sleeved closed shirts, gloves, waterproof clothing and poncho are required. A pouch for your camera equipment is also highly recommended. Those preferring to remain at base camp in Bwindi may do so, however, there is no price reduction on the land program, and permits, if purchased, are non-refundable.



## THINGS YOU NEED TO KNOW ABOUT UGANDA

---

### Participants

- Visitors must be in excellent physical condition, without any heart problems and be prepared to spend strenuous days in humid rain forests, steep terrain and high-altitude trekking for chimpanzee and gorillas, as well as other primates. Your walks can be arduous, tough, wet and long. Waterproof hiking boots, trousers and long-sleeved closed shirts, garden gloves, waterproof clothing and poncho are essential. You may walk for many hours before you even come across the gorillas (or if lucky, find them in an hour!).
- Your time with the gorillas is limited to one hour before you must trek back to the camp. You should always consult your personal physician before embarking on such an adventure.
- Rainstorms may occur at length or with little notice. Participants should come mentally and physically prepared for different types of weather, including both warm and cold temperatures.



### General

- True adventure in travel can sometimes be accompanied by unexpected changes in conditions, itineraries and occasionally your accommodations.
- Participants should travel with a spirit of adventure and flexibility. Remember to pack your patience and sense of humor! Be willing to look past self-imposed ideals of Western amenities and do not compare these new experiences with your life back home.
- Travel often includes visiting destinations with modest infrastructures and a bending definition of comfort. That being said, some locations are nestled in absolute luxury where pampering is the norm.
- Participants should generally be in good health and prepared to travel in locations without medical facilities.

### Air Schedules

The cost of your program does not include international airfare. If you require assistance, please contact Classic Escapes at 718-280-5002 and we will happily provide air quotes to you. You may make your own international air arrangements, but please ensure you arrive/depart on the correct dates. Contact your Journey Manager at Classic Escapes to verify the dates to ensure there are no errors.

**The start and end city for the land only program is Entebbe, Uganda.**

## SAFARI AIR LUGGAGE RESTRICTIONS

**It is of vital importance that all guests traveling to Uganda strictly adhere to the luggage limits and regulations as stipulated below.**

<b>LUGGAGE WEIGHT LIMIT PER PERSON *</b>	<b>33 Lbs. (15 kg's)</b> – total weight inclusive of luggage and hand luggage/camera equipment.
<b>LUGGAGE TYPE</b>	Soft sided bags – no hard-shelled bags, wheels or frames allowed.
<b>LUGGAGE DIMENSIONS**</b>	14 inches wide x 12 inches thick x 27 inches long.

**PERSONAL WEIGHT ALLOWANCES ON INTERNAL FLIGHTS:** Your journey includes internal flights aboard light aircraft which are designed with a maximum body weight and luggage allowance; this is closely monitored by the flight operators for safety reasons. If your personal weight exceeds **85 kilos (187 lbs.)** it may be necessary to purchase an extra seat and your Classic Escapes Operations Manager will contact you should this be necessary.

**Please note:**

\*This is the total weight including both luggage and hand luggage/camera equipment. This is a safety requirement due to the sensitive weight and balance checks on the small aircraft and must be strictly adhered to. Travelers who require additional luggage must pre-book and pay for this on confirmation of the reservation. We would like to remind you that laundry services are available in all camps and lodges.

\*\*Please keep in mind that the baggage compartments on most of the light aircraft are only 25cm (10 inches) high, so the pilots must have the ability to manipulate the bag into the compartment.



**NO WHEELED OR PULL HANDCASES**



**NO HARD BODY CASES**



**SOFT SIDED BAGS WITH WHEELS THAT ARE NOT IN HARD FRAME**

**HANDLING OF INCORRECT LUGGAGE ON ARRIVAL**

The carriage of excess baggage is at the sole discretion of the Company after taking into consideration the aircraft being used and the number of passengers booked. When excess baggage is carried it will be charged at the prevailing rate. Excess luggage is charged at USD \$3.00 per kilogram (2.2 lbs.). Guests who are unable to depart on the scheduled charter will be given the option to book a private charter at additional costs to be paid directly prior to departure and subject to the availability of aircraft at the time of booking these flights. No refunds on the costs paid for scheduled charters which were missed due to their incorrect luggage and or accommodation not provided due to this delay will be provided.

**ASSISTANCE WITH BAGGAGE PRIOR TO ARRIVAL**

Should guests be travelling with the incorrect luggage and require assistance with storage (which we offer at no additional cost) or transportation to their point of departure from Uganda (transportation costs apply), this can be arranged provided this has been brought to our attention prior to their arrival in Uganda, preferably at the time of final booking confirmation.



Schedules, accommodations and prices are accurate at the time of writing. They are subject to change.



# YOUR JOURNEY AT A GLANCE

**INCLUDING:** ENTEBBE, KIBALE FOREST NATIONAL PARK, QUEEN ELIZABETH NATIONAL PARK & BWINDI IMPENETRABLE FOREST NATIONAL PARK. PRE- EXTENSION TO MURCHISON FALLS.

**SPONSORING ORGANIZATION:** TOLEDO ZOO

**ESCORTED BY:** A TOLEDO ZOO HOST

**DATE:** NOVEMBER 1 TO 11, 2025

<b>COST: PER PERSON</b>	<b>MAIN PROGRAM BASED 10 TRAVELERS</b>	<b>PRE-EXTENSION TO MURCHISON FALLS BASED ON 8 TRAVELERS</b>
DOUBLE OCCUPANCY LAND PACKAGE ONLY, INCLUDING INTERNAL AIR IN UGANDA	\$12,495 PER PERSON	\$3,295 PER PERSON
SINGLE OCCUPANCY LAND PACKAGE ONLY *	\$3,695 PER PERSON	\$795 PER PERSON
PLUS EXTRA PERMITS (ONE GORILLA & ONE CHIMPANZEE TREK ARE INCLUDED IN THE COST OF THE TRIP) EACH EXTRA GORILLA PERMIT IN UGANDA EACH EXTRA CHIMP TREK AT KIBALE	\$800 PER PERSON, PLUS \$30 TIPS \$250 PER PERSON, PLUS \$30 TIPS	N/A

\* SINGLE SUPPLEMENTS ARE VALID FOR FIRST TWO SINGLE ROOMS BOOKED. IF MORE THAN TWO SINGLE ROOMS, ADDITIONAL SUPPLEMENT WILL APPLY. SINGLES ARE ASSIGNED ON A FIRST COME/FIRST SERVE BASIS.

**INTERNATIONAL AIR ARRANGEMENTS:** The cost of your program does not include international airfare. If you require assistance, please contact Classic Escapes at 718-280-5002 and we will happily provide air quotes to you. You may make your own international air arrangements, but please ensure you arrive/depart on the correct dates. Contact your Journey Manager at Classic Escapes to verify the dates to ensure there are no errors. **The start and end city for the land only program is Entebbe, Uganda**





## CONDITIONS OF TRAVEL:

---

The purchase of your travel booking constitutes a contractual agreement between the traveler(s), customer(s), and/or purchaser(s) (collectively as "You" and "Traveler"), and Classic Escapes ("Classic Escapes", "We", "Us") pursuant to the following terms and conditions ("Terms", "Agreement"):

### REGISTRATION & PAYMENTS

**HOW TO BOOK:** Fill out and sign the enclosed reservation form and send it, along with the relevant deposit as shown below, to: CLASSIC ESCAPES, 191 W Poplar Street, Floral Park, NY 11001 Upon receipt of your signed reservation form and deposit, we will, subject to availability, reserve your spot on the tour. You may consider your booking confirmed when you receive a confirmation notice and invoice from us.

**DEPOSIT AND FINAL PAYMENT:** You will be required to pay the following per person deposits when booking. Those amounts are:

- \$2,500 for main trip
- \$700 for the Murchison Falls National Park pre-extension
- \$800 for EACH gorilla permit
- \$250 for EACH chimpanzee permit
- \$220 Lion Tracking

• *Please note all permit rates are as of January 13, 2025, and are subject to change. If permit costs increase, the additional cost will be invoiced to each traveler. Permits once purchased are non-refundable.*

All deposits are subject to the Cancellation policy herein. Final payment is required no less than 95 days prior to departure (July 29, 2025) unless otherwise stated. Some airfares or services must be paid in full at the time of booking. Payments may be made by check or with a credit card (American Express, Visa, MasterCard, or Discover.) Conditioned on receipt of final payment in full, all final documents and air tickets will be sent to you approximately two weeks prior to departure.

**CREDIT CARD PROCESSING FEE:** Payments made via credit card will incur a non-refundable processing fee of 5%. This fee applies to both deposits and final payments and will be added to the total trip cost. By choosing to pay via credit card, you agree to this additional charge. Alternative payment methods, such as bank transfers or checks, are available to avoid this fee.

**CREDIT CARD TRANSACTIONS:** If for any reason, any travel service provider is unable to provide the services for which you have contracted, your remedy lies against the provider, and not against Classic Escapes, and in the event that payment has been made to Classic Escapes by credit card, you agree that you will not seek to chargeback your payment to Classic Escapes. If the credit card is passed through to the travel service provider and you seek to chargeback your payment from the provider, you agree to be held liable and indemnify Classic Escapes against this chargeback from the provider, including without limitation any air debit memos charged to Classic Escapes. If the credit card is declined, you guarantee that you will settle any amounts owing to Classic Escapes via money order or cash immediately. Except in cases of fraud, you agree not to file any dispute with your bank or credit card company to avoid or violate any booking terms and conditions of Classic Escapes or its suppliers, including cancellations or changes of itinerary or arrangements for reasons beyond the control of Classic Escapes or its suppliers. If you attempt to chargeback, reverse, or recollect a previously authorized trip payment, Classic Escapes reserves the right to collect all additional costs, fees and expenses associated with such chargeback, reversal, or recollection, including, without limitation, attorney fees.

**IMPORTANT CONDITIONS:** Prices are subject to increase prior to the time you make full payment. Prices are not subject to increase after you make full payment, except for charges resulting from increases in government-imposed taxes or fees. By signing the reservation form, you expressly acknowledge your acceptance of these conditions (i.e., increases before full payment and increases attributable to government-imposed taxes or fees after full payment will be your responsibility) applicable to your purchase.

**RATES:** Rates are based on the minimum number of guests outlined in this document, plus airfare costs, currency exchange rates and other factors and are subject to change. Though it is rare for Classic Escapes to make a price adjustment after promotion of an itinerary, we do reserve the right to assess a surcharge if the minimum is not met, or if increases are forced upon us by airlines or other partners or because of changes in currency exchange rates.

**ADDITIONAL FEES:** Additional taxes and surcharges that cannot be pre-collected may be charged locally. Cost of passport and visa fees and service charges for obtaining visa fees; excess baggage charges levied by airlines; laundry and other items of a personal nature; optional travel insurance policy(s); or any other costs incurred that cannot be pre-collected are NOT included and are the sole responsibility of the Traveler.



**SINGLE SUPPLEMENT:** The quoted rate is valid for the first two single rooms booked and on a first-come, first-served basis. If more than two single rooms are needed, an additional supplement may apply. Single accommodations are not guaranteed but will be provided at additional cost if available (see 'Your Journey at a Glance' section for the cost.) The single room supplement pays for privacy, not better accommodations. For passengers who are traveling alone and wish to share a room with another tour member, we will do our best to provide a roommate. However, if this is not possible, you will be required to pay the single room supplement prior to your departure from the USA.

**GRATUITIES, ENTRANCE FEES & TAXES:** Gratuities for baggage handling, service charges and taxes imposed by hotels, and entrance fees to all points of interest as outlined in the itinerary are included in the final cost. U.S. and foreign airport taxes are included in air costs. Tips to drivers and specialist guide(s) are **not** included and are the sole responsibility of the Traveler.

## **CANCELLATIONS, DEVIATIONS & CHANGES**

**TRAVEL INSURANCE:** We recommend travel insurance. Travel insurance can provide financial reimbursement should the unexpected occur.

**CANCELLATION:** Please be aware that most travel bookings are non-refundable and cancelled bookings will incur charges. These charges can be up to 100% of the cost of the booking, regardless of whether travel has commenced. Where we incur any liability for a cancellation fee or charge for any booking that you cancel, you agree to indemnify us for the amount of that fee or charge. Cancellations are only effective upon receipt of written notification. The following per-person fees are applicable; however, depending on the specific itinerary or other factors, we may require a non-refundable deposit:

- Up to 6 months prior to departure (May 5, 2025), \$300 per person administrative fee, \$500 non-refundable deposits given to suppliers, plus all permits purchased.
- 179 days to 96 days prior to departure (May 6 to July 28, 2025), \$300 per person administrative fee, \$1,500 non-refundable deposits given to suppliers, plus all permits purchased.
- 95 days to 76 days prior to departure (July 29 to August 17, 2025), 25% refund is possible excluding all permits purchased..
- 75 days or less prior to departure (August 18, 2025), no refund is possible.

These cancellation fees are also in addition to any fees imposed by airlines.

**WE STRONGLY RECOMMEND THE PURCHASE OF TRAVEL INSURANCE.**

**REFUNDS:** While Classic Escapes uses its best endeavors to ensure that all anticipated accommodation is available as planned, there is no claim of any nature whatsoever against Classic Escapes for a refund, in whole or in part, if any accommodation or excursion is unavailable and a reasonable alternative is not found, or if the Traveler is unable to use any service provided in the itinerary.

**CHANGES:** Once your tour is reserved, changes to the itinerary are possible subject to the availability of air or land space at the time of your request. Should there be any change fees imposed by any airlines or ground operators, or additional costs incurred due to the availability of any space, these costs will be invoiced to you and you will be responsible for payment thereof.

**SPECIAL ARRANGEMENTS:** Should you wish to make additional travel plans, including specially arranged pre- or post-tour extensions different than those offered in conjunction with your tour, a service charge of \$150 per person (over and above the cost of the services required) will be assessed.

## **DOCUMENTS**

**PASSPORTS:** All individuals departing from the United States of America must be in possession of a valid passport. Please check that your passport is valid for at least 6 months beyond your intended return date. It is your responsibility to ensure that you have valid travel documentation, including but not limited to passports and visas, which meet the requirements of immigration and other government authorities at every destination. You are responsible for confirming with the United States Department of State or the representative government agency of the country to which you are traveling to confirm the requirements for visas and/or other requirements for admission to your destination. Any fines, penalties, payments, or expenditures incurred as a result of such documents not meeting the requirements of those authorities will be your sole responsibility.

**REAL ID:** Beginning May 7, 2025, if you plan to use your state-issued ID or license to fly within the U.S., it is your responsibility to make sure it is REAL ID compliant. If you are not sure if your ID complies, please check with your local state Department of Motor Vehicles or visit [www.tsa.gov/real-id](http://www.tsa.gov/real-id).

**TRAVEL DOCUMENTS:** It is the responsibility of each Traveler to obtain and carry a valid passport, visa(s), and all other documents required by applicable government regulations. When traveling domestically or internationally, the U.S. Transportation Security



Administration (TSA) and U.S. Department of Homeland Security (DHS) advise that everyone carry acceptable identification in order to board a flight. Acceptable identification can be found at <http://www.tsa.gov/traveler-information/acceptable-ids>. The name, date of birth and gender that appears on the identification card must exactly match the same such data that is listed on airline ticket(s) and booking records. You acknowledge any failure to strictly comply with these requirements may result in denied boarding or an undue delay at an airport security checkpoint causing Traveler to miss flight(s), and subsequent scheduled travel bookings on cruises and tours.

Travel documents include, without limitation, airline tickets, hotel vouchers, tour vouchers, or any other document (whether in electronic form or otherwise) used to confirm an arrangement with a service provider. Travel documents may be subject to certain conditions and/or restrictions such as, but not limited to, being non-refundable, non-date-changeable, and subject to cancellation and/or amendment fees. Travel documents cannot be transferred to another person to use. All airline tickets must be issued in the name of the passport/photo identity holder. An incorrect name on a booking may result in an inability to use that booking and the booking being cancelled. Any errors in names, dates, and timings may result in an inability to use that booking and the booking being cancelled. Any errors in names, dates, and timings on your documentation will be your responsibility if we are not advised at the time of booking. Please reconfirm your flights at least 24 hours prior to departure.

**PRE-DEPARTURE INFORMATION:** Upon receipt of your registration and deposit, we will send you an electronic pre-departure packet containing all the information you need to prepare for your tour, including the complete itinerary, packing checklist, required documents, insurance information, etc.

**FINAL DOCUMENTS:** Electronic final documents and air e-tickets will be sent to you approximately two weeks prior to departure, provided all monies have been paid in full.

## **TRANSPORTATION**

**AIR TRANSPORTATION:** Your program does not include international airfare. If you require assistance, contact Classic Escapes.

**FREQUENT FLYER MILEAGE:** Check on the airline's website to enquire who their partners are. Obtain frequent flyer mileage on any of these carriers. Present your frequent flyer card for all flight check-ins and keep the boarding passes until you receive a statement with the mileage credit.

**TRANSFERS:** Roundtrip airport transfers are included in the tour for guests arriving on group flights. If travelers make their own air arrangements, they will be subject to extra transfer fees.

**FLIGHT CONFIRMATION:** We strongly suggest that you reconfirm exact flight times with the carrier prior to departure. Air travelers are required to check in at least 2 hours prior to departure time for domestic flights and 3 hours for international flights and must report to the gate at least 30 minutes prior to departure time. Failure to comply may result in the loss of the seat to another passenger.

**HAZARDOUS MATERIALS:** Federal law prohibits passengers from bringing hazardous materials on the aircraft. Federal law forbids the carriage of hazardous materials aboard aircraft in the passenger's luggage or on the passenger's person. A violation can result in five years' imprisonment and penalties of \$250,000 or more (49 U.S.C. 5124). Hazardous materials include explosives, compressed gases, flammable liquids and solids, oxidizers, poisons, corrosives, and radioactive materials. Examples: Paints, lighter fluid, fireworks, tear gases, oxygen bottles, and radiopharmaceuticals. There are special exceptions for small quantities (up to 70 ounces total) of medicinal and toilet articles carried in the passenger's luggage and certain smoking materials carried on the passenger's person. For further information, each passenger should contact the relevant airline representative(s) on their itinerary. Restrictions on hazardous materials are listed <http://www.tsa.gov/traveler-information/prohibited-items>.

**INSECTICIDE NOTICE:** Some countries require insecticide spraying of aircraft prior to a flight or while you are on the aircraft. We recommend that you refer to the Department of Transportation's list of airports in countries that require airlines to treat the passenger cabin with insecticides prior to the flight or while on the aircraft available at <https://www.dot.gov/office-policy/aviation-policy/aircraft-disinsection-requirements>.

**BAGGAGE & FEES:** Additional fees for baggage may apply. Please contact your airline or refer to its website for detailed information regarding its checked baggage policies. On average, international flights from the USA allow one piece of checked luggage, not exceeding 50 pounds, plus a carry-on piece not exceeding 15 pounds; however, we always recommend that you check your airline's policy just before departure, as luggage limitations are always subject to change. There may also be luggage and weight restrictions for your destination and that information will be forwarded to you with your pre-departure material and also listed on your final documents.

**LUGGAGE ALLOWANCES ON INTERNAL FLIGHTS:** Your journey includes optional internal flights aboard light aircraft which are designed with a maximum luggage allowance; this is closely monitored by the flight operators for safety reasons. You are allowed one carry-on and one piece of luggage, a total weight of **33lbs.** (15 kgs.) per person including the camera equipment. Further, only soft-sided duffel bags are accepted, **without wheels**, as they stow best in vehicles and airplanes with limited space.

**AIRLINE CLAUSE:** The airlines concerned are not to be held liable for any act, omission, or event during the time the passengers are not on board their planes or conveyance. The passengers' tickets in use by the airline or by other carriers concerned when issued shall constitute the sole contract between the airlines and the purchaser of these tickets and/or passengers.

**DELAYS:** We cannot be held liable for any delays or additional costs incurred as a result of airlines not running to schedule. Any additional land or air fees imposed on account of airline delays will be borne by the traveler.

### TRIP DETAILS

**ACCOMMODATIONS:** You will marvel at the wonderful accommodations provided throughout your tour. All rooms have private bathroom facilities and air conditioning and/or fans, unless otherwise specified. All rates are based on double occupancy. Most rooms are twin-bedded, but king-size beds are occasionally available and should be requested in advance. Accommodations listed in this itinerary are correct at time of writing, but on rare occasions may be substituted for a different property of comparable quality.

**MEALS:** All meals as specified in the itinerary. Please notify us if you have special dietary needs or requests, and we will do our best to accommodate.

**WATER:** It is always advisable to drink bottled and/or filtered water when traveling overseas. Safe drinking water will be provided to travelers free of charge in the vehicles and during meals.

**PHOTOGRAPHY:** The Company reserves the right without further notice to make use of any photograph or video taken on the tour by our photographers without payment or permission. We guarantee that no photographs of a compromising nature will be used.

**GUIDES:** If one of Classic Escapes' guides are unable to take a trip due to circumstances out of our control (i.e., illness, etc.), we reserve the right to substitute with another guide.

**TOUR ITINERARY:** To the best of our knowledge the itinerary is correct at the time of printing. We cannot be held responsible for any inaccuracies or changes that may occur after printing.

**HEALTH AND SPECIAL REQUIREMENTS:** You must have the proper immunizations and health screenings and required documentation of such immunizations and screenings before travel. It is your responsibility to ensure you are aware of any health requirements, health advisories, or health travel restrictions applicable to your travel destinations and to ensure that you carry all necessary vaccination documentation. Classic Escapes is not responsible for providing you with this information. Travel carriers and local authorities at travel destinations may require specific testing prior to boarding and/or upon arrival at your destination, including, but not limited to, a temperature check as a result of the COVID-19 pandemic. You may be denied entry onto your carrier and/or entry upon arrival at your destination or be required to self-quarantine at your destination and upon your return to the United States. You must comply with local government regulations. Any additional costs are your responsibility. Check the State Department Web site <http://travel.state.gov>, for relevant information relating to travel to specific destinations, and the Center for Disease Control <http://wwwnc.cdc.gov/travel/> relating to health issues related to travel.

You must be in good physical and mental health. It shall be your duty to inform us in case you have any medical condition that may affect your ability to enjoy and pursue fully the services of Classic Escapes. By registering for a Classic Escapes service/program, you certify that you do not have any mental, physical, or other condition or disability that would create a hazard for yourself or others.

### **COVID-19 ACKNOWLEDGEMENT**

In order to participate in one of our tours, travelers must certify that they have not recently been treated for, nor are aware of any physical or other condition or liability that would create a hazard to themselves or other members of the tour and agree to comply with all health protocols as directed by Classic Escapes and their representatives during their journey. Travelers must be vigilant regarding COVID and frequently wash or sanitize hands throughout their journey. While there are no COVID restrictions any longer, travelers may wish to wear masks in areas that are most prone to exposure. **Travelers voluntarily assume all risks and related expenses in the event that they or any member of their traveling party require testing, quarantine, or become infected with COVID-19.** Classic Escapes will endeavor to provide assistance wherever possible.



**TRAVEL INSURANCE:** For your protection, we strongly recommend that you purchase trip cancellation and travel accident insurance. However, no representation or description of the insurance made by Classic Escapes to you constitutes a binding assurance or promise about the insurance. Classic Escapes is not an insurance company and has no responsibility for the submission, payment, or adjustment of any insurance claims. Any insurance claims that may fall under the relevant travel insurance policy must be submitted to the insurance company identified in the policy. We recommend the following service – please visit the website to enroll:

<http://www.travelguard.com/classicescapes/>. Any questions about what travel insurance does or does not cover should be addressed directly to the travel insurance company, Travel Guard at 1-866-385-4839 and reference ARC #71298. If you decline insurance coverage, you will personally assume full responsibility for any financial loss associated with your travel arrangements, and you could lose your travel investment and/or have to pay more money to correct the situation. **THE PURCHASE OF TRAVEL INSURANCE IS HIGHLY RECOMMENDED ON ALL TRIPS.**

**EMERGENCY EVACUATION COVERAGE:** For the convenience of our travelers, Classic Escapes provides a complimentary Medical Insurance Plan during your trip via Travel Guard Group, Inc. This includes:

- Emergency evacuation insurance up to \$100,000.
- Up to \$25,000 medical expense and up to \$500 dental expense coverage subject to the terms and limitations of the insurance policy.
- 24-hour worldwide travel and medical assistance.

Medical Plan (926801)

Please click here to view complete coverage of details.

[https://webservices.travelguard.com/Product/FileRetrieval.aspx?CountryCode=US&StateCode=AL&ProductCode=926801&PlanCode=NW&FileType=PROD\\_PLAN\\_GM](https://webservices.travelguard.com/Product/FileRetrieval.aspx?CountryCode=US&StateCode=AL&ProductCode=926801&PlanCode=NW&FileType=PROD_PLAN_GM)

## **TERMS & CONDITIONS**

**TOUR OPERATOR:** Classic Escapes acts as a tour operator/travel agent only. Classic Escapes does not own, operate, manage, or control any independent suppliers of services and is not liable for their acts or omissions. Classic Escapes' obligations to you are to make travel bookings on your behalf and to arrange relevant contracts between you and other travel service providers. We have no responsibility for these services, nor do we have the authority to make any warranty or representation regarding their standard. Requests cannot be guaranteed. All bookings are subject to the terms and conditions and limitations of liability imposed by these travel service providers. You understand that your legal recourse is against the specific provider, not Classic Escapes. Conditions can change rapidly in a country at any time. It is your responsibility to check the USA Government Travel advisories for your intended destination at <https://travel.state.gov/content/travel.html>.

**RESPONSIBILITY OF THE COMPANY:** We always do our best to make sure your travel arrangements are satisfactory. However, Classic Escapes and its employees, shareholders, subsidiaries, affiliates, officers, directors, successors, agents, and assigns do not own or operate any third-party entity that provides goods and services for your travel, including without limitation lodging facilities, airline, vessel, motorcoach, or other transportation companies, local ground operators, providers, food service providers, etc. All such persons and entities are independent contractors and are in no way affiliated to Classic Escapes. We are not liable for any delays or additional costs incurred by the Traveler as a result of any actions or occurrences by any of the foregoing third party entities.

**LIABILITY:** Classic Escapes is not liable for any negligent or willful act or failure to act of any travel service provider or of any third party.

Because Classic Escapes does not have the right to control the operations of such travel service provider or any third party, you agree that Classic Escapes is not liable for any personal injury or property damage which may arise out of these services. Classic Escapes hereby disclaims any liability whether based on contract, tort, strict liability or otherwise, including without limitation liability for any direct, punitive, special consequential, incidental or indirect damages, in connection with the goods or services provided by any supplier booking through Classic Escapes, including without limitation liability for any act, error, omission, injury, loss, accident, delay or irregularity which may be incurred through the fault, negligence, willful acts, omissions or otherwise of such travel service provider or any third party, or their respective employees, agents, servants, or representatives, including, without limitation, their failure to deliver or their partial or inadequate delivery of services, their cancellation and refund policies, fuel increases, bankruptcy or cessation of operations and other matters outside of Classic Escapes' control, and you hereby exonerate Classic Escapes from any liability with respect to the same.

**FORCE MAJEURE:** Classic Escapes will not be in breach of these terms and conditions or otherwise be liable to you, for any failure or delay in performing an obligation under this Agreement that is due to any of the following causes, to the extent beyond its reasonable control: acts of God, accident, riots, war, terrorist act, illness, disease, epidemic, pandemic, quarantine, civil commotion, breakdown of communication facilities, including web host and internet service provider, breakdown or malfunction of equipment, destruction of or serious damage to facilities, natural catastrophes including, but not limited to extreme weather events, floods and volcanic eruptions,

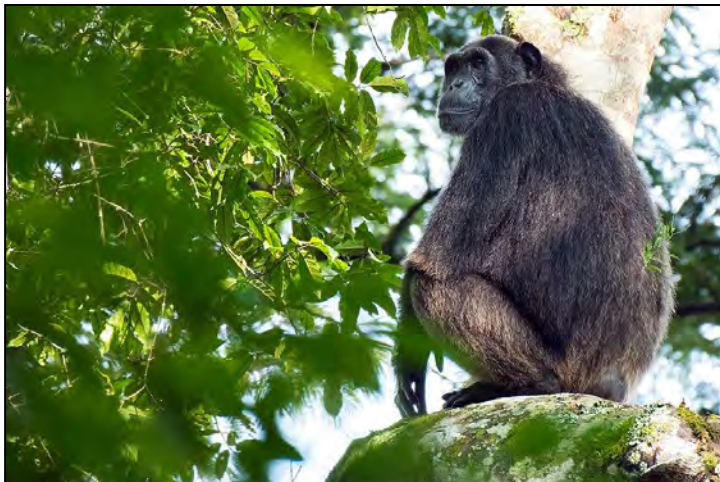
governmental acts or omissions, changes in laws or regulations, national strikes, fire, explosion, generalized lack of availability of raw materials or energy, and any other unforeseen circumstance which is beyond the control of Classic Escapes. THE PURCHASE OF TRAVEL INSURANCE IS HIGHLY RECOMMENDED ON ALL TRIPS.

**REFUSAL OF SERVICE:** Service providers reserve the right to refuse service to travelers at their sole discretion, including, without limitation, if the traveler: (i) lacks proper documentation for the country of destination; (ii) has a contagious disease; (iii) is under the influence of alcohol, drugs, or narcotics; and/or (iv) manifests disruptive and/or unruly behavior. Classic Escapes assumes no liability for the acts of the service provider in refusing service.

**ELECTRONIC OR HANDWRITTEN SIGNATURE:** Both parties agree that you may acknowledge and agree to these Terms: (i) electronically; (ii) by handwritten signature; (iii) by any other electronic means, including, without limitation, via email acceptance of these Terms; or (iv) by your implied consent deemed via your actions, which shall include without limitation the payment of the invoice in part or in full or your use of the services provided by Classic Escapes or any other travel supplier related to your booking. All such means will be deemed to constitute effective acknowledgement and execution of this Agreement and shall be sufficient to bind the parties to the terms and conditions of this Agreement.

**RESERVATION OF RIGHTS:** We reserve the right, in our sole discretion, to change these Terms and Conditions at any time. Updated versions of the Terms will be provided to you, will be posted on our website, and are effective immediately on posting.

**GOVERNING LAW:** The construction, validity, and performance of these Terms and any disputes between the parties shall be governed by and construed according to the laws of the State of New York, without giving effect to its conflict of law principles, and any federal laws applicable therein. Both parties submit to the exclusive jurisdiction of the courts of the State of New York with respect to any legal proceedings relating to these Terms.



**RESERVATION FORM:**

**TOLEDO ZOO ~ UGANDA**

25AFZ1101TOL

Enclosed is my deposit for \$ \_\_\_\_\_ (\$2,500 per person for the main trip, plus \$700 for the post- extension plus all permits) to hold \_\_\_\_\_ place(s) on the Primate classic safari to Uganda departing November 1, 2025. Check the Journey at a Glance page for all pricing and tour conditions for all deposits required.

Deposits/Final payments can be made by credit card, check, or wire transfer. If you choose to pay your deposit or balance via credit card, a non-refundable 5% processing fee will be added to the amount charged. By selecting this payment method, you acknowledge and agree to this additional fee. Please indicate below how you wish to make your payment.

I will pay my deposit by:  MasterCard  Visa  American Express  Discover  Check  Wire Transfer

I will pay my balance by:  MasterCard  Visa  American Express  Discover  Check  Wire Transfer

(Credit Card Authorization form needs to be completed and returned to Classic Escapes via mail, scan and email, or fax to 718-204-4726)

Please make checks payable to CLASSIC ESCAPES and mail to 191 W Poplar Street, Floral Park, NY 11001

Final payment due date is **July 29, 2025**

**A copy of your passport must accompany this form to confirm reservation. Upon receipt of your signed reservation form, passport copy and deposit we will, subject to availability, reserve your spot on the tour. Passport must be valid for at least 6 months after the return of your trip and have four consecutive blank pages in the visa section.**

1) NAME (As appears on passport):  Mr.  Mrs.  Ms. \_\_\_\_\_ DOB \_\_\_\_\_

2) NAME (As appears on passport):  Mr.  Mrs.  Ms. \_\_\_\_\_ DOB \_\_\_\_\_

STREET ADDRESS: \_\_\_\_\_

CITY: \_\_\_\_\_ STATE: \_\_\_\_\_ ZIP: \_\_\_\_\_

PHONES: HOME: ( ) \_\_\_\_\_ OFFICE: ( ) \_\_\_\_\_ MOBILE: ( ) \_\_\_\_\_

E-MAIL ADDRESS: \_\_\_\_\_ FAX: ( ) \_\_\_\_\_

- I certify that I have not recently been treated for, nor am I aware of any physical or other condition or liability that would create a hazard to myself or the other members of this tour.
  - The two of us above are sharing a room and, where possible, would like a room with:  ONE  TWO Beds (Make one selection only)
  - I am sharing with \_\_\_\_\_ (form sent separately)
  - I need assistance in securing a roommate. I understand if one cannot be located for me by final payment date, I agree to pay the additional single supplement amount listed on the Journey at a Glance page. I prefer to share with:  Smoker  Non-smoker.
  - I desire single accommodations, if available, and will pay the single supplement additional cost
  - I desire to participate in the optional pre-extension to Murchisson Falls
  - I/We wish to purchase  one or  two gorilla permits plus one  chimp permit
- PLEASE NOTE: passport copy is required to purchase the permits.**

**CLASSIC ESCAPES CAN ASSIST WITH INTERNATIONAL FLIGHT ARRANGEMENTS FROM ANY US CITY.**

YES, I WILL REQUIRE ASSISTANCE. PLEASE SEND ME INFORMATION TO DEPART FROM \_\_\_\_\_  
I REQUIRE:  ECONOMY  BUSINESS/FIRST CLASS.

All rates quoted are based on tariffs and value of foreign currencies in relation to the U.S. dollar in effect as of January 13, 2025 and are subject to change. Refund is made less any cancellation charges levied in accordance with the policy outlined in the accompanying Conditions of Travel. **WE STRONGLY RECOMMEND THAT YOU OBTAIN TRAVEL INSURANCE. RESERVATIONS ARE ACCEPTED SUBJECT TO TOUR CONDITIONS AND WILL BE CONFIRMED ONLY IF ACCOMPANIED BY COMPLETED FORM SIGNED BY THE TOUR PARTICIPANT(S).**

SIGNATURE: \_\_\_\_\_ DATE: \_\_\_\_\_

SIGNATURE: \_\_\_\_\_ DATE: \_\_\_\_\_

CLASSIC ESCAPES INC.  
191 W Poplar Street,  
Floral Park, NY 11001

(We recommend that you keep a copy of your selections as noted above for your future reference)





191 W Poplar Street, Floral Park, NY 11001  
T: (718) 280-5000; (800) 627-1244  
F: (718) 204-4726  
E: info@classicescapes.com

**TOLEDO ZOO~ UGANDA**  
**NOVEMBER 1 TO 11, 2025**

**CREDIT CARD PAYMENT AUTHORIZATION**

*Please Note: If you wish to charge your deposit to Visa, MasterCard, American Express or Discover, this authorization form MUST be completed and returned to us along with your reservation form before we can process your application.*

I authorize (**Classic Escapes Inc.**) to charge my VISA/MASTERCARD/DISCOVER/AMEX listed below:

Name appearing on credit card \_\_\_\_\_

Card number \_\_\_\_\_ Expiration date \_\_\_\_\_

Card Verification Number\* \_\_\_\_\_ Card Type \_\_\_\_\_

Billing address of credit card \_\_\_\_\_

Amount of transaction \_\_\_\_\_

Services rendered/Items purchased \_\_\_\_\_

Phone number \_\_\_\_\_

Signature \_\_\_\_\_ Date \_\_\_\_\_

**\*How To Locate Your Card Verification Number:**

**(Visa, MasterCard, Discover:** Locate the credit card number on the back of the card above the signature box. Enter the 3-digit number which follows the credit card number. **American Express:** Enter the 4-digit number found directly above and to the right of the credit card number.)

I understand that all rates quoted on this tour I'm making a payment on are based on tariffs and value of foreign currencies in relation to the U.S. dollar in effect as of January 13, 2025 , and are subject to change Cancellations are only effective on receipt of written notification. The following per person fees are applicable on this tour:

- Up to 6 months prior to departure (May 5, 2025), \$300 per person administrative fee, \$500 non-refundable deposits given to suppliers, plus all permits purchased.
- 179 days to 96 days prior to departure (May 6 to July 28, 2025), \$300 per person administrative fee, \$1,500 non-refundable deposits given to suppliers, plus all permits purchased.
- 95 days to 76 days prior to departure (July 29 to August 17, 2025), 25% refund is possible excluding all permits purchased..
- 75 days or less prior to departure (August 18, 2025), no refund is possible.

These cancellation fees are also in addition to any fees imposed by airlines.

**WE STRONGLY RECOMMEND THE PURCHASE OF TRAVEL INSURANCE.**

PLEASE NOTE: At times, our bank requires photocopy of credit card (both sides) and driver's license or document showing signature of cardholder, in order to process the charge. While it is not required at this time that you include these materials with your deposit, if our bank requests it, we will contact you for these copies.