

YOU ARE CORDIALLY INVITED TO JOIN THE
BIRMINGHAM ZOO

ON AN EXCLUSIVE SAFARI TO
TANZANIA UNMATCHED

ANIMAL KINGDOM'S GARDEN OF EDEN

JUNE 7 TO 17, 2026



191 W Poplar Street, Floral Park, NY 11001
T: (718) 280-5000; (800) 627-1244
F: (718) 204-4726
E: info@classicescapes.com
W: www.classicescapes.com

For more information, find us on:
[facebook.com/Classic.Escapes.inc](https://www.facebook.com/Classic.Escapes.inc)
[instagram.com/classicescapesinc](https://www.instagram.com/classicescapesinc)

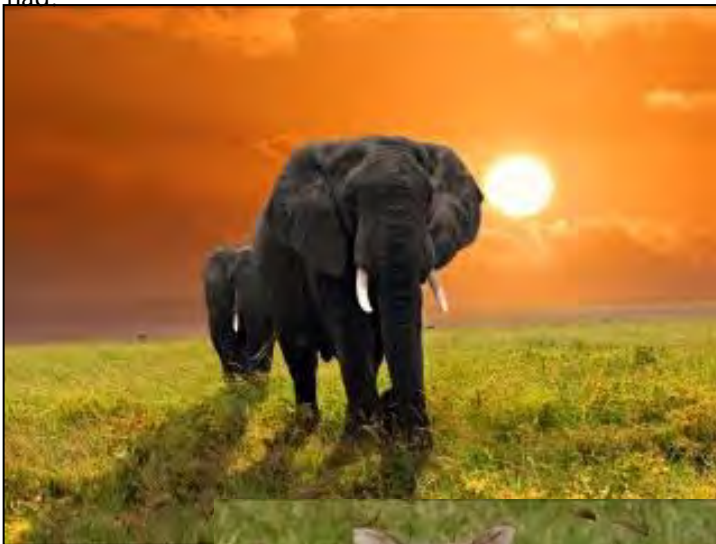
YOUR TOUR LEADER ~ CHRIS PFEFFERKORN

Chris Pfefferkorn, President & CEO at the Birmingham Zoo has spent over 25 years in the Zoological field with 16 of those years devoted to conservation initiatives including research on the flora and fauna of Zimbabwe, Africa. In partnership with Chipangali Wildlife Orphanage, he works on grant writing and fundraising, budget formation and oversight, participation in field research activities, dissemination of field research information, and developing field conservation programs for the Chipangali Carnivore Conservation program. Chris, along with Chipangali staff, helped start the Environmental Programs Involving Children (EPIC) Kids program that provides environmental education to the underserved school children of western Zimbabwe.



YOUR PROFESSIONAL NATURALIST: FAHADH HARIRI

Of Somali descent, **Fahadh Hariri** is well-known in Tanzania for his expertise in regional animals, birds, and culture. A graduate of the prestigious Mt. Meru Tour Guide College, he began his career with UNICEF and has been leading safaris for decades. Fahadh is gifted with an energetic and spontaneous personality and will regale you with delightful interpretations and stories that heighten the safari experience for each and every traveler. As one traveler said, "We have traveled the world, and without a doubt, Fahadh is the best guide we have ever had."



A MAP OF YOUR JOURNEY



YOUR ITINERARY

DAY 1~SUNDAY~JUNE 7

USA/EN ROUTE

Your journey begins as you board your flight to Arusha. (Meals Aloft)

DAY 2~MONDAY~JUNE 8

ARRIVE ARUSHA

Today you land at Kilimanjaro International Airport. Upon arrival, you will be met by your Classic Escapes representative and transferred to your hotel, where you will enjoy the balance of your day at leisure.

Your luxurious lodge is nestled in the foothills of Mount Meru, in view of Mount Kilimanjaro. This is an absolutely wonderful place to begin your journey to Tanzania. Following all your flights this pleasant and peaceful country estate combines old-world African country elegance, excellent farm cuisine, personal service, and genuine warmth from your hosts. The lodge has 18 individually styled garden rooms, two hidden cottages, and the River House – a secluded thatched cottage on the Usa River. alfresco dining with barbeque facilities can be enjoyed. Overnight at the RIVERTREES COUNTRY INN, in garden rooms. (Meals aloft) <http://rivertrees.com/>



DAYS 3~TUESDAY ~ JUNE 9

TARANGIRE NATIONAL PARK

Wake up feeling refreshed and eager to start your journey as you drive to Tarangire National Park, the third-largest national park in Tanzania. The feeling that this is a special, almost magical place strikes you as soon as you enter Tarangire and witness your first baobab tree. Here the gently rolling countryside is dotted with these majestic trees, which seem to dwarf the animals that feed beneath them. Called the “tree of life,” many myths and legends surround *Adansonia digitata* (*Adansonia* for the French surgeon Michel Adanson and *digitata* meaning hand-like, a reference to the shape of the leaves). Your guides regale you with one or two of these tales as you pass through the park. This stretch of Africa is spectacular in the dry season when many of the migratory wildlife species come back to the permanent waters of the Tarangire River. Huge herds of wildebeest, zebra, eland, and oryx gather to stay in Tarangire until the onset of the rains when they migrate again to good grazing areas. For those who love birds, Tarangire has over 300 bird species. But in addition to all those magnificent trees, birds, and beasts, Tarangire is superlative for another reason – elephants. Tarangire is home to the largest population of elephants in northern Tanzania, now numbering close to 2,500 individuals.



Your lodging for the upcoming two nights is a permanent tented lodge situated near the shores of Lake Manyara, within a wildlife-abundant region boasting breathtaking vistas of the Rift Valley and Ngorongoro Highlands. Spanning 62,000 acres, this concession area is dedicated to conservation by the local Maasai Community. The camp comprises 38 spacious tents and six family tents, all elevated on raised decks, each featuring en suite bathrooms with built-in showers, mosquito netting, and private verandahs offering panoramic views of the valley and Lake Manyara. Nestled at the end of the main decking area, a delightful swimming pool awaits, complemented by stunning vistas of the plains. Indulge in delectable dining experiences indoors or outdoors at the camp's restaurant, accompanied by the serene beauty of the wilderness.



Overnight at MARAMBOI TENTED LODGE. (B,L,D)
<https://twctanzania.com/tarangire/maramboi-tented-lodge/>
Driving Times from Arusha to Maraboi Tented camp: about 2 ½ hours.

DAY 4~WEDNESDAY ~ JUNE 10

TARANGIRE NATIONAL PARK

Today, enjoy a full day of game viewing in Tarangire National Park. After an adventurous morning on safari, you'll enjoy a Bush Lunch, a unique and refreshing dining experience. Picture yourself savoring a freshly prepared, gourmet meal right in the heart of the African wilderness. You'll find a beautifully appointed dining area in the bush with elegant table settings and various hot dishes prepared on-site. This exclusive experience lets you relish your meal surrounded by the sights and sounds of nature, providing a serene and memorable contrast to the excitement of the safari. From the moment you sit down, you'll receive exceptional service and a menu designed to delight your taste buds while you take in the stunning landscape.



Resume your game run in the afternoon and return to camp in the evening, after an exhilarating day in the bush
Overnight at MARAMBOI TENTED LODGE. (B,L,D)

DAY 5~THURSDAY~ JUNE 11

TARANGIRE NATIONAL PARK/LAKE MANYARA/NGORONGORO CONSERVATION AREA

Today's drive takes you to Lake Manyara National Park, an ornithological paradise with over 350 species of birds. You may see Verreaux's Eagle, a variety of vultures, storks, swifts, and swallows winging their way atop the spectacular cliffs overlooking the lake which often has a pinkish hue due to the flamingos, pelicans, and storks shimmering in the distance.

Lake Manyara, at 3,150 feet in altitude, varies in salinity levels with wetter and drier climate cycles, and at times it is replete with flamingos, pelicans, storks, and cormorants. Springs in the park's northern end support a dense groundwater forest of magnificent giant fig and mahogany trees that shelter blue and vervet monkeys and an abundance of baboons, bushbuck, waterbuck, and elephant.

South of the groundwater forest, acacia woodland, and open grassland are frequented by buffalo, wildebeest, impala, giraffe, zebra, and the elusive tree-climbing lions – the signature of this park. Perhaps the most recognizable tree found



here is the baobab tree, which folklore says was uprooted and planted upside down. The hippo pool, where visitors may get out of their vehicles, is located on a freshwater stream that enters the lake at its northern tip.

Enjoy a walk through the treetops on the *Treetop Walkway* for a sky-high adventure through the beautiful forest of Lake Manyara. Walk among the treetops and experience untouched nature and wildlife from a unique perspective. This 1,213 feet airwalk starts with a short boardwalk that gradually rises from ground level up through the canopy of the forest. You walk over a series of suspension bridges with thick netting on the sides and reach a height of 59 feet off the ground. Each of the bridges ends on a viewing deck situated around tree trunks. These treetop platforms are perfect places to stop and enjoy life in the canopy amongst butterflies, monkeys, and birds.



Enjoy lunch at Ol Mesera Restaurant, featuring the Baobab Feast Menu, which offers a rich taste of Tanzanian cuisine in an open-air setting near Lake Manyara. The menu includes starters like samosas or salads with baobab dressing, followed by main dishes such as spiced beef or chicken stews with pilau rice, chapati, or ugali. Vegetarian options include flavorful lentils and vegetables. Baobab fruit is a key highlight, used in sauces or desserts like baobab ice cream. With views of baobab trees and wildlife, the experience is both delicious and scenic. Depart from Lake Manyara National Park and drive to Ol Mesera Restaurant (*Baobab feast menu*) for lunch. Afterward, continue your journey to your lodge for dinner and overnight.



Situated on top of a valley, overlooking the Eastern wall of the Ngorongoro Crater and a beautiful waterfall is your exclusive lodge. Kitela Lodge consists of 20 spacious suites built inside of cottages reminiscent of an old colonial farm, all with en-suite facilities and stylish contemporary décor. Meals are served in the main building and on occasion lunch is served al fresco by the pool. Relax and unwind in the tranquility of the beautiful gardens, at the heated pool or in the African spa. Free Wi-Fi in the common area.

Overnight at KITELA LODGE. (B, Picnic Lunch, D)
<https://twctanzania.com/accommodation/kitela-lodge/>
Driving Times from Tarangire to Lake Manyara National Park: about 2 hours.
Driving Times from Lake Manyara National Park to Kitela Lodge: about 2 hours
Driving Times: Kitela Lodge to Ngorongoro Crater: about 1 hour 50 minutes



DAY 6 ~FRIDAY~ JUNE 12

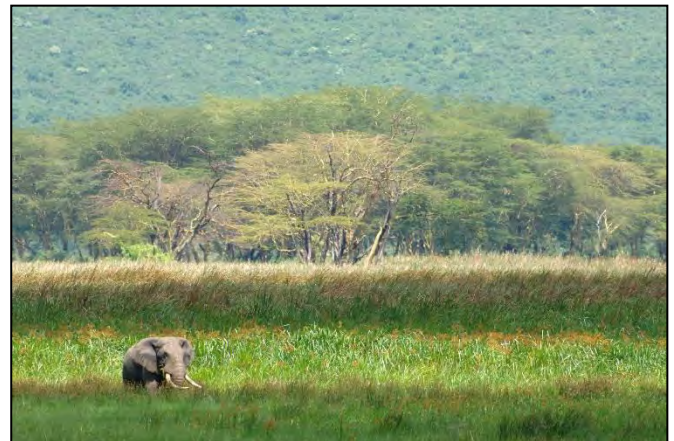
NGORONGORO CRATER

Board your 4-wheel drive this morning for an amazing journey as you descend onto the floor of the crater, a World Heritage site, which is an extinct volcano and the largest unbroken caldera in the world. The cone is believed to have collapsed nearly two million years ago, and while the cone was standing, it could have been as tall, if not taller, than Mount Kilimanjaro. The crater (1,800 feet deep and 102 square miles) is a microcosm of East African scenery with abundant wildlife including more than 25,000 larger animals, mostly zebra and wildebeest. This is also the best place in Tanzania to see magnificent black-maned lions. This area offers an outstanding opportunity to see black rhinos, as they are protected around the clock.



Over the years, the floor of this crater has become mostly savannah (grassland), with a soda lake whose size changes depending on the rains that are the lifeline of this amazing land. On this lake, marvel at the colorful flamingos and a variety of other water birds - more than 100 species of birds found here that are not found in the Serengeti. Resident Ostrich, Crowned Crane, and Kori Bustard are joined seasonally by migrant flocks of White and Abdim's Storks. Patience may also reward you with glimpses of leopard, cheetah, hyena, jackal, elephant, warthog, buffalo, impala, buffalo, hartebeest, eland and many other antelopes. Your wildlife-viewing will be dramatic, and the experience memorable. Enjoy a "picnic" lunch on the crater floor and afterwards return to the rim of the crater and your lodge.

Overnight at KITELA LODGE. (B,L,D)



DAYS 7/8/9~ SATURDAY/SUNDAY/MONDAY~ JUNE 13/14/15

OLDUPAI GORGE/SERENGETI NATIONAL PARK

You now drive to the legendary Oldupai Gorge. The drive to the gorge is breathtaking – passing through a spectacular mix of savannah grassland and volcanic hills, where red-robed Maasai graze their cattle before it drops steeply down into the gorge itself. The name originated from the Maasai word “ole” meaning “the place of” and “dupai” meaning “wild sisal,” a local plant resembling aloe which grows abundantly in the area. This plant has yellow-green, succulent, spear-like leaves which form dense clumps, binding the loose soil of the gorge and sheltering many other plants and animals. Domesticated sisal is used to produce rope, rugs, and baskets which are sold at the local markets and are one of the largest exports of Tanzania.



Oldupai is one of the world’s most important paleoanthropological locations. This is where, in 1959, Mary and Louis Leakey found fossil evidence of the 1.7-million-year-old *Australopithecus Boisei* (*Zinjanthropus*) and *Homo Habilis* (*Handyman*). Thousands of stone tools, some of which have been used by *Homo Habilis*, have been found at Oldupai; the oldest style is easiest to remember because it is called Oldowan. In addition to the remarkable human fossils, prehistoric elephants, giant horned sheep, and enormous Ostrich fossils have been found here and extinct species unearthed include three-toed horses and giant antelope. Since the Leakeys first began searching the area for clues to our distant past, more than sixty hominid remains have been excavated, belonging to four different hominids, showing the gradual increase in brain size and in the complexity of their stone tools.



The gorge itself is a very steep-sided ravine roughly 30 miles long and 295 feet deep. It resembles a small Grand Canyon with exposed strata of different layers where the deposits of rich fossil fauna, hominid remains, and stone tools were found. The gray lines are volcanic tuffs and eruptions are used to estimate the age of the fossils. You will want to visit the museum which contains a cast of the 3.7-million-year-old footsteps of *Australopithecus Afarensis* preserved in solidified volcanic ash, found at nearby Laetoli by Mary Leakey in 1979. Outside of the museum, a Tanzanian guide will explain the geological features of the gorge and the work of the Leakeys.



Resume your drive to Serengeti National Park (3,646,500 acres), the jewel in the crown of Tanzania’s protected areas with over 3 million large mammals roaming its plains. It lies between Ngorongoro and Lake Victoria and adjoins Kenya’s Maasai Mara. The Serengeti has come to symbolize paradise to all, including the local Maasai, who have grazed their cattle on the vast grassy plains for generations. To the Maasai, it is Siringitu – “the place where the land moves on forever.” Today, the Serengeti National Park, the Ngorongoro Conservation Area, and the Maasai Mara Reserve protect the greatest and most varied collection of terrestrial wildlife on earth, and one of the last great migratory systems still intact.



More than a million wildebeest, accompanied by hundreds of thousands of zebras and other herbivores, descend upon the short-grass plains of the southeastern Serengeti at the start of the rainy season around December. After calving in January and February, they scatter over the southern and central plains. By May the rain ends, the grass has been reduced to stubble, and the animals begin their long march to dry-season grazing grounds near the permanent waters of the Serengeti's northern woodlands and Kenya's Maasai Mara. Reaching these destinations by July or so, they remain until October, when they head back to the southeastern Serengeti. This struggle for survival continues unaided and unaltered through the millennia!



The Serengeti is incredible to visit any time of the year. In the Seronera Valley, towering yellow fever trees and palm thickets line the Seronera River and its hippo pools. This is a superb area for seeing predators such as lion, leopard, and cheetah, and their prey – giraffe, topi, Bohor reedbuck, Defassa waterbuck, buffalo, and impala.

The kopjes (prehistoric rock outcroppings) host hyraxes, dwarf mongooses, and red-headed agamas, while patience might reward you with a sleepy black-maned male lion or leopard. The open grassland is home to large groups of Thomson's and Grant's gazelles, spotted hyenas, jackals, and such birds as the Double-banded Courser, Yellow-throated Sandgrouse, Red-capped Lark, Fischer's Sparrow-lark, and Capped Wheatear. Your twice-daily wildlife drives will allow ample viewing. As an optional excursion, you can take a balloon safari for an exhilarating experience over the Savannah as the early sun rises and the animals are more active.



Schedules, accommodations and prices are accurate at the time of writing. They are subject to change.



Your accommodation, Kubu Kubu Tented Lodge, is a permanent tented camp set on a hill in central Serengeti with views over the Serengeti plains. Designed in a modern African style with a touch of romance, Kubu Kubu is the perfect balance of sleek and cozy. The main area has a deck, lounge, pool, and the camp has 25 spacious tents. All tents are built on wooden platforms with en-suite facilities and feature a balcony with magnificent views of the Serengeti plains.

Overnights at the KUBU KUBU TENTED LODGE. (B,L,D Daily).

From Kitela Lodge to Kubu Kubu Tented Lodge: 4-5 hours (not including wildlife viewing en route and stop at Oldupai Gorge) some are on tarmac, and some are on dirt tracks.



DAY 10~TUESDAY~ JUNE 16

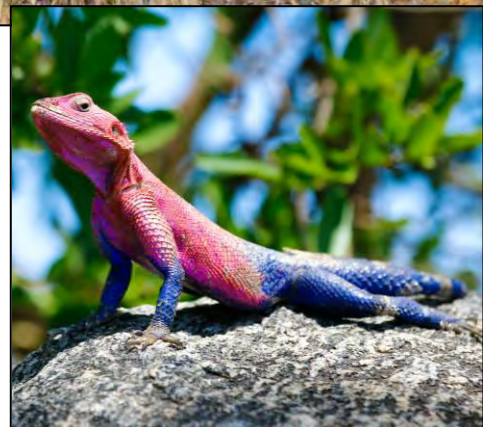
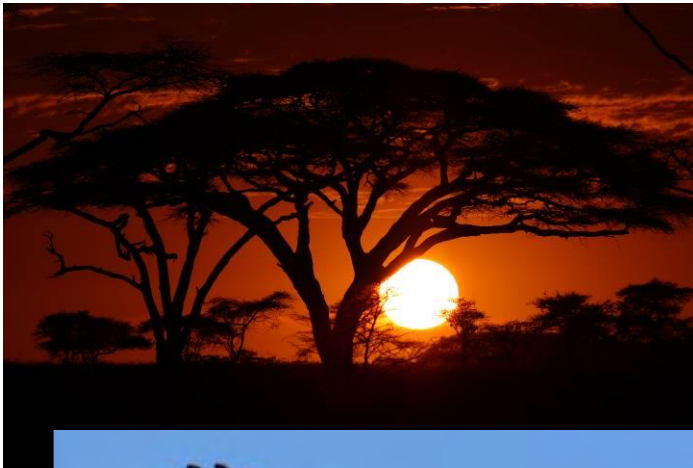
ARUSHA/EN ROUTE

Last chance to photograph that awesome sunrise before flying back to Arusha. You will have lunch at the Rivertrees Country Inn. An opportunity to shop at the African Heritage before transferring to the airport for your flight back home bidding a fond farewell to your driver/guides. A DAYROOM IS PROVIDED AT THE RIVERTREES COUNTRY INN. (B,L)

DAY 11~ WEDNESDAY~ JUNE 17

ARRIVE USA

Today you arrive back home bringing with you the memories of all the wonderful sights of East Africa. (Meals Aloft)



OPTIONAL POST-EXTENSION TO ZANZIBAR



DAY 10~TUESDAY~ JUNE 16

ARUSHA/ZANZIBAR

Last chance to photograph that awesome sunrise before flying back to Arusha, where you bid farewell to your fellow tour members who are returning to the USA and embark on your adventure. Connect with your flight to Zanzibar, the best-kept secret in the Indian Ocean, with its fascinating history and magnificent beaches. The Assyrians, Sumerians, Egyptians, Phoenicians, Indians, Chinese, Persians, Portuguese, Omani Arabs, Dutch, and English have all been here at one time or another. Some, particularly the Shirazi Persians and Omani Arabs, stayed to settle and rule. With this influence, Zanzibar has become predominantly Islamic, with the remaining population made up of Christians, Hindus, and Sikhs. The earliest visitors to Zanzibar were Arab traders who are said to have arrived in the 8th century. For centuries they sailed with the Monsoon winds from Oman to trade primarily in ivory, slaves, and spices.

The earliest building that remains in Zanzibar is the mosque at Kizimkazi which dates from 1107 and is a present-day tourist attraction. Zanzibar has two main islands, Unguja (normally known as Zanzibar Island) and Pemba. Stone Town, located on Zanzibar Island, is the old city and cultural heart of Zanzibar, where little has changed in the last 200 years. It is a place of winding alleys, bustling bazaars, mosques, and grand Arab houses whose original owners vied with each other over the extravagance of their dwellings. This one-upmanship is particularly reflected in the brass-studded, carved, wooden doors – there are more than 500 different examples of this handiwork. Stone Town was recently and deservedly declared a World Heritage Site by UNESCO.



Schedules, accommodations and prices are accurate at the time of writing. They are subject to change.



Begin to experience Zanzibar's fascinating history and vibrant culture with a tour of the fabled Stone Town. Visit the House of Wonders, the Palace Museum (People's Palace), Dr. Livingstone's House, the Arab Fort, and the National Museum of Zanzibar, which houses relics from the times of the Sultans and early explorers. See Zanzibar's bustling market, winding alleyways, ornately carved and studded doors, two cathedrals, and countless mosques. Visit the Anglican Church, built in 1874 on the site of the old slave market, and see the chambers beneath it where slaves were held before they were sold. You will see the site of Sultan Barghash's harem at Marahubi, with its colorful history. Stone Town also has many excellent gift shops with plenty of souvenirs and handicrafts to choose from.

Your home for the next two nights, Park Hyatt Zanzibar, is located on the beachfront in the heart of Stone Town, a designated UNESCO heritage site. This stunning property features 67 luxurious rooms, including 11 suites, that seamlessly blend understated elegance, contemporary style, modern technology, and timeless regional accents. All rooms are equipped with a flat-screen cable TV, a mini-bar and tea and coffee making facilities, air conditioning, and complimentary Wi-Fi. Private bathrooms have a bathtub, free toiletries, and a hairdryer. Spoil yourself with a well-deserved wellness treatment at The Spa. Facing the Indian ocean and overlooking the local beach, the hotel's infinity pool is the ideal place to enjoy a morning swim, or a couple late afternoon laps to end the day. The hotel has a fully-equipped fitness center and a Dining Room decorated in a colonial style. Open for breakfast, lunch and dinner, it serves fresh and tasty food influenced by Portuguese and Arabian cuisine.



Overnight at the PARK HYATT ZANZIBAR (in park view rooms). (B, Packed L)
<https://www.hyatt.com/en-US/hotel/tanzania/park-hyatt-zanzibar/zanzph>

DAY 11~WEDNESDAY~ JUNE 17 ZANZIBAR~ SPICE TOUR & JOZANI FOREST

The history of Zanzibar would be incomplete without the cloves, nutmeg, cinnamon, pepper, and many other spices which brought the Sultans of Oman and the beginnings of the infamous slave trade. This morning, you will visit a plantation and have your senses dazzled with fresh spices. A detailed description will be given of these spices and their uses in cooking and cosmetics. You will be fascinated by the sheer number of spices produced and their incredible value for many ailments. This is an excellent opportunity to purchase spices and spice oils at the best prices.



Schedules, accommodations and prices are accurate at the time of writing. They are subject to change.



Drive to the Jozani Natural Forest Reserve, located in the central east region of Zanzibar Island and home to the rare red colobus monkey, endemic to Zanzibar (so named for a red spot on its head). These habituated monkeys are full of character and, although completely free, tend to feed just outside the reserve's perimeter. They are extraordinarily photogenic as they leap from tree to tree just above you. Jozani is home to other species including Syke's monkeys, small bucks, and bushpigs. The elusive Zanzibar leopard, last sighted several years ago, is said to feed here at night. (Perhaps this is why the reserve is only open during the day?) Jozani has an excellent nature trail, and the guides are well-trained and informative.

Overnight at the PARK HYATT ZANZIBAR. (B,L)

DAYS 12/13~ THURSDAY/FRIDAY ~ JUNE 18/19
ZANZIBAR~ NEPTUNE PWANI BEACH RESORT

Today you drive to your lodge by the sea and your home for the next two nights, Neptune Pwani Beach Resort where the remainder of the day is at leisure. Enjoy two days of decadent leisure as you relax at your own pace.



This beautiful lodge is located in Kiwengwa on the northeast coast of the island, between the villages of Pongwe and Pwani Mchangani. The Resort has 194 rooms, all with a terrace and ocean view, meticulously created, emulating traditional Zanzibar style, using the best in local design, interiors, and furnishing, meeting top international standards. All rooms are equipped with a bathroom with a walk-in rain shower, hairdryer, air-conditioning, mosquito net, satellite TV, stocked mini bar, mini safe, coffee/tea making facilities, and free Wi-Fi are also provided with a comfortable sitting area with sofa. Two large freshwater swimming pools are featured on site. Relaxing health and beauty spa treatments can be enjoyed in the exclusive Earth & Rain Spa. Be sure to enjoy a meal at any of the six onsite restaurants, which feature international cuisine and a poolside location.

There are many opportunities for water activities here as well. Activities such as canoeing, scuba diving, and snorkeling are also provided at an additional cost. The island and its pristine surroundings can be explored from a different perspective on a boat in the Indian Ocean, upon request.

Overnights at THE NEPTUNE PWANI BEACH RESORT & SPA in deluxe seaside with partial ocean view rooms (B,L,D Daily)

<https://www.neptunehotels.com/neptune-pwani-beach-resort-spa/>

DAY 14~SATURDAY~JUNE 20
ZANZIBAR/EN ROUTE

Your final morning is at leisure to relax and enjoy this paradise. This afternoon transfer to the airport for your flights back home. (B, Meals Aloft)

DAY 15~SUNDAY~JUNE 21
USA

Arrive back home, bringing with you the memories of all the wonderful sights of East Africa. (Meals Aloft)



OPTIONAL BALLOON SAFARI OPTIONS IN TANZANIA

Experience an exhilarating balloon safari for the most incredible way of viewing wildlife. It begins in the early morning, after you observe the inflating of the balloon, and you have an hour of uninterrupted views of wildlife from the air – the best way to see the incessant movement of animals and the fabulous vistas of Tanzania. During the flight, you will ascend to a high altitude to take in an amazing panoramic view and then descend to treetop level and silently glide above the wildlife below. Upon landing, enjoy a “bubbly” brunch, set especially for you in the middle of the plains. Zebra and elephants may be your dining guests, and Africa’s colorful birds may vie for a crumb of your bread. You then meet with your driver/guide and continue your safari. Many consider this one of the most memorable experiences of their safari.



Gliding across **Tarangire National Park** as the sunrise stains the plains with hues of orange and pink, you see beautiful savannah dotted with giant baobab trees, while the Tarangire River looks like a silver ribbon, filled with many of the animals that come to relieve their thirst in the early morning. Look for incredible herds of elephants, dazzles of zebra in the early sun, giraffes, and much more, as well as some of the 500 species of birds that Tarangire is famous for.

Flying high up in the skies of the **Serengeti National Park**, you view an endless magical array of savannahs, rivers, forests, and escarpments. At certain times of the year, you may see some of the great migration, and there’s nothing like this unparalleled phenomenon of migrating herds of zebra, wildebeest, and gazelle to view from the air. Jan-Mar, the animals are massed in Southern Serengeti; Apr-Jun, they’re on the move in Central Serengeti and going North, Jul-Oct they’re in the Maasai Mara. But whether the migration is in the Serengeti or not, watching predators such as lions, and cheetahs hunting their prey, and looking for all the marvels of the bush, is exciting and never gets old!

We suggest booking in advance to avoid disappointment. At present, the costs are as follows:

- **Serengeti** with collection from your lodge – Kubu Kubu Tented Lodge: \$599 per person.
- **Tarangire** with collection from your lodge – Maramboi Tented Lodge: \$550 per adult (including children 12 and over).
- **These prices are as of October 12, 2024, and subject to change**

Reservations for these excursions are necessary before departure from the USA, if you wish to be guaranteed a seat. Full payment must be forwarded to CLASSIC ESCAPES, 191 W Poplar Street, Floral Park, NY 11001 to be received at least three weeks prior to departure. If your trip does not materialize due to weather or other reasons, your payment will be refunded upon returning to the U.S.A. However, if you should cancel for any reason, payment is non-refundable.



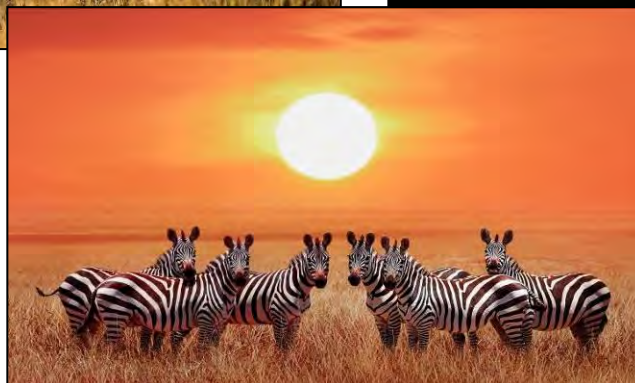
INCLUSIONS

- Flight between Serengeti and Arusha.
- Flight between Arusha and Zanzibar on the post extension.
- Superior accommodations throughout as indicated or similar.
- All meals on safari in Tanzania; all other meals as specified.
- All wildlife viewing by 4X4 vehicle with the services of an experienced driver/guide. A window seat is guaranteed.
- Professional naturalist, Fahadh Hariri, will accompany the group with a minimum of 10 travelers.
- Chris Pfefferkorn will accompany the group with a minimum of 10 travelers on both main and extension programs.
- Complimentary bottled water in vehicles and during meals.
- All park entry fees.
- Complimentary luggage tags and a water bottle.
- Complimentary medical evacuation insurance.

EXCLUSIONS

- Round trip air transportation from USA. If you require assistance with air arrangements, contact Classic Escapes at 718-280-5002.
- Gratuities to drivers/ guides/ naturalists and other conveyance attendants. *We estimate \$15 per person/per day for the naturalist guide. \$15 per person/per day for the safari driver. \$10 per person/per day for the camp staff. \$5 per person for each arrival and departure transfer from the airport/hotel. These are daily per-service estimates, and an exact tipping chart will be detailed on your final itinerary.*
- Dining room tips and gratuities for baggage handling.
- Passport and visa fees and service charges for obtaining visas; U.S. citizens currently require a Tanzania.
- Excess baggage charges levied by airlines.
- Meals and beverages, other than those specified.
- Laundry and other items of a personal nature.
- Personal and baggage insurance.
- Cost for anything not specifically mentioned in the listing above.

Please Note That The Itinerary Sequence Is Correct At The Time Of Writing But Is Subject To Change.



SAFARI AIR LUGGAGE RESTRICTIONS

It is of vital importance that all guests traveling to Tanzania strictly adhere to the luggage limits and regulations as stipulated below.

Please note:

LUGGAGE WEIGHT LIMIT PER PERSON *	44 Lbs. (20 kg) – total weight inclusive of luggage and hand luggage/camera equipment. Carry-ons may not weigh more than 4 lbs (2 kg)
LUGGAGE TYPE	Soft-sided (all sides) bags – no hard-shelled bags or frames allowed. Wheels should be avoided.
LUGGAGE DIMENSIONS**	12 inches wide x 10 inches high x 24 inches long.

**This is the total weight including both luggage and hand luggage/camera equipment.*

This is a safety requirement due to the sensitive weight and balance checks on small aircraft and must be strictly adhered to. Travelers who require additional luggage must pre-book and pay for this on confirmation of the reservation. We would like to remind you that laundry services are available in all camps and lodges.

**Please keep in mind that the baggage compartments on most of light aircraft are only 25cm (10 inches) high, so the pilots must have the ability to manipulate the bag into the compartment.



HANDLING OF INCORRECT LUGGAGE ON ARRIVAL

The carriage of excess baggage is at the sole discretion of the Company after taking into consideration the aircraft being used and the number of passengers booked. When excess baggage is carried it will be charged at the prevailing rate. Excess luggage is charged at USD \$3.00 per kilogram. Guests who are unable to depart on the scheduled charter will be given the option to book a private charter at additional costs to be paid directly prior to departure and subject to the availability of aircraft at the time of booking these flights. No refunds on the costs paid for scheduled charters that were missed due to their incorrect luggage and or accommodation not provided due to this delay will be provided. In all cases, additional arrangements for transfers, overnight accommodation in the Serengeti or Arusha, and meals are on the guests' own account.

ASSISTANCE WITH BAGGAGE PRIOR TO ARRIVAL

Should guests be traveling with the incorrect luggage and require assistance with storage (which we offer at no additional cost) or transportation to their point of departure from Tanzania (transportation costs apply), this can be arranged provided this has been bought to our attention prior to their arrival in Tanzania, preferably at the time of final booking confirmation.

BRING-A-BOOK FOUNDATION

Your safari will include a visit to a local school. We encourage you to bring colorful books and magazines, as well as school supplies such as pens, paper, crayons, soccer balls, etc., which you can present to the children during your visit. Many of these children have never owned a book in their life and the connection you'll make with them is invaluable. You'll find that children in the schools are eager to meet with visitors, practice their English, learn about your culture, and proudly share their own. You are often welcomed with a local song or dance.

After seeing schools firsthand, meeting the dedicated teachers working under the most difficult conditions, and children hungry for knowledge, many travelers have wanted to help the schools they visited or continue to support a child's learning opportunities after they return to their homes. Bring-A-Book is an innovative effort adopted by Classic Escapes to expand education opportunities for school children. The Bring-A-Book Foundation is a registered Kenyan Charitable Trust that was created as a way to facilitate travelers' wishes to help the schools and is used to get books into the hands of children as quickly and economically as possible. With compassionate ground operators such as Rangers Safaris, Wilderness Safaris, and &Beyond, Classic Escapes has expanded the reach of BAB to Tanzania, South Africa, and Zambia, and to other countries that our travelers visit around the world. Information will be given to you with your final documents, but if you wish to help further, feel free to call Classic Escapes at 800-627-1244 for details.



CLASSIC ESCAPES CONSERVATION FUND

In keeping with our mission to provide exciting, educational, and fun-filled experiences that nurture and directly support the diverse wildlife and cultures we visit around the world, Classic Escapes has established the Classic Escapes Conservation Fund to ensure that a percentage of all profits go to support conservation and wildlife researchers performing their critical work in the field. Project support has included wild dog, elephant, rhino, and cheetah conservation in Botswana, Kenya, Tanzania, and Namibia, penguins in Punta San Juan Peru, tiger preservation in India, and sponsoring school children in Kenya, among many other projects around the world. By traveling with Classic Escapes, you are supporting travel as a tool for building the mutual respect, awareness, and understanding that are vital to preserving this planet for future generations.

THINGS YOU NEED TO KNOW ABOUT TANZANIA

Participants:

- Must be able to climb in and out of, as well as move around in confined quarters within safari 4 x 4 vehicles, minibuses, and small aircraft unassisted. People need to be willing to rotate seats.
- Must be able to tolerate riding on uncomfortably uneven, bumpy roads (some with many potholes) for long periods of time (6-9 hours maximum), as well as some off-road experiences when opportunities allow.
- Must be able to stand and/or walk moderate distances when visiting villages, towns, or other sites. Walking will be on uneven ground or uphill, often at altitudes that many people are not accustomed to.
- Should generally be in good health and prepared to travel to locations without medical facilities.

In general, this trip requires:

- Flexibility and good humor – unexpected changes and/or glitches will occur.
- A spirit of adventure and curiosity
- Interest in and willingness to appreciate a destination with a modest infrastructure and a bending definition of comfort. That being said, some locations are nestled in absolute luxury where pampering is the norm.

Air Schedules

The cost of your program does not include international airfare. If you require assistance, please contact Classic Escapes at 718-280-5002 and we will happily provide air quotes to you. You may make your own international air arrangements, but please ensure you arrive/depart on the correct dates. Contact your Journey Manager at Classic Escapes to verify the dates to ensure there are no errors. **The start and end city for this program is Arusha, Tanzania. The extension returns from Dar es Salaam.**

Upon registration, you must provide your full legal name as it appears on your passport. In the event an airline ticket is issued with incorrect information you have provided, you will be responsible for charges associated with reissuing the ticket.



Schedules, accommodations and prices are accurate at the time of writing. They are subject to change.



YOUR JOURNEY AT A GLANCE

INCLUDING: ARUSHA, TARANGIRE NATIONAL PARK, LAKE MANYARA NATIONAL PARK, NGORONGORO CRATER, OLDUPAI GORGE, & SERENGETI NATIONAL PARK. POST-EXTENSION TO ZANZIBAR

SPONSORING ORGANIZATION: BIRMINGHAM ZOO

ESCORTED BY: CHRIS PFEFFERKORN, PRESIDENT & CEO OF THE BIRMINGHAM ZOO

DATES: JUNE 7 TO 17, 2026

COST: PER PERSON BASED ON DOUBLE OCCUPANCY	MAIN PROGRAM BASED ON 10 TRAVELERS	POST-EXTENSION TO ZANZIBAR BASED ON 10 TRAVELERS
LAND ONLY COST	\$9,995 PER PERSON	\$2,895 PER PERSON
SINGLE ROOM SUPPLEMENT FIRST TWO SINGLES THIRD OR MORE SINGLES	\$2,395 PER PERSON, ADDITIONAL \$3,795 PER PERSON, ADDITIONAL	\$995 PER PERSON, ADDITIONAL

INTERNATIONAL AIR ARRANGEMENTS: The cost of your program does not include international airfare. If you require assistance, please contact Classic Escapes at 718-280-5002 and we will happily provide air quotes to you. You may make your own international air arrangements, but please ensure you arrive/depart on the correct dates. Contact your Journey Manager at Classic Escapes to verify the dates to ensure there are no errors. **The start and end city for this program is Arusha, Tanzania. The extension returns from Dar es Salaam.**





CONDITIONS OF TRAVEL:

The purchase of your travel booking constitutes a contractual agreement between the traveler(s), customer(s), and/or purchaser(s) (collectively as "**You**" and "**Traveler**"), and Classic Escapes ("**Classic Escapes**", "**We**", "**Us**") pursuant to the following terms and conditions ("**Terms**", "**Agreement**"):

REGISTRATION & PAYMENTS

HOW TO BOOK: Fill out and sign the enclosed reservation form and send it, along with the relevant deposit as shown below, to: CLASSIC ESCAPES, 191 W Poplar Street, Floral Park, NY 11001 Upon receipt of your signed reservation form and deposit, we will, subject to availability, reserve your spot on the tour. You may consider your booking confirmed when you receive a confirmation notice and invoice from us.

DEPOSIT AND FINAL PAYMENT: You will be required to pay the following per person deposits when booking. Those amounts are:

- \$2,000 for the main trip
- \$600 for the post extension

All deposits are subject to the Cancellation policy herein. Final payment is required no less than 95 days prior to departure March 4, 2026) unless otherwise stated. Some fares or services must be paid in full at the time of booking. Deposits may be paid by check, wire transfer or with a credit card (American Express, Visa, MasterCard, or Discover.) Final payments can ONLY be made by check or wire transfer. Conditioned on receipt of final payment in full, all final documents and air tickets will be sent to you approximately two weeks prior to departure.

CREDIT CARD TRANSACTIONS: If for any reason, any travel service provider is unable to provide the services for which you have contracted, your remedy lies against the provider, and not against Classic Escapes, and in the event that payment has been made to Classic Escapes by credit card, you agree that you will not seek to chargeback your payment to Classic Escapes. If the credit card is passed through to the travel service provider and you seek to chargeback your payment from the provider, you agree to be held liable and indemnify Classic Escapes against this chargeback from the provider, including without limitation any air debit memos charged to Classic Escapes. If the credit card is declined, you guarantee that you will settle any amounts owing to Classic Escapes via money order or cash immediately. Except in cases of fraud, you agree not to file any dispute with your bank or credit card company to avoid or violate any booking terms and conditions of Classic Escapes or its suppliers, including cancellations or changes of itinerary or arrangements for reasons beyond the control of Classic Escapes or its suppliers. If you attempt to chargeback, reverse, or recollect a previously authorized trip payment, Classic Escapes reserves the right to collect all additional costs, fees and expenses associated with such chargeback, reversal, or recollection, including, without limitation, attorney fees.

IMPORTANT CONDITIONS: Prices are subject to increase prior to the time you make full payment. Prices are not subject to increase after you make full payment, except for charges resulting from increases in government-imposed taxes or fees. By signing the reservation form, you expressly acknowledge your acceptance of these conditions (i.e., increases before full payment and increases attributable to government-imposed taxes or fees after full payment will be your responsibility) applicable to your purchase.

RATES: Rates are based on the minimum number of guests outlined in this document, plus airfare costs, currency exchange rates and other factors and are subject to change. Though it is rare for Classic Escapes to make a price adjustment after promotion of an itinerary, we do reserve the right to assess a surcharge if the minimum is not met, or if increases are forced upon us by airlines or other partners or because of changes in currency exchange rates.

ADDITIONAL FEES: Additional taxes and surcharges that cannot be pre-collected may be charged locally. Cost of passport and visa fees and service charges for obtaining visa fees; excess baggage charges levied by airlines; laundry and other items of a personal nature; optional travel insurance policy(s); or any other costs incurred that cannot be pre-collected are NOT included and are the sole responsibility of the Traveler.

SINGLE SUPPLEMENT: The quoted rate is valid for the first two single rooms booked and on a first-come, first-served basis. If more than two single rooms are needed, an additional supplement may apply. Single accommodations are not guaranteed but will be provided at additional cost if available (see 'Your Journey at a Glance' section for the cost.) The single room supplement pays for privacy, not better accommodations. For passengers who are traveling alone and wish to share a room with another tour member, we will do our best to provide a roommate. However, if this is not possible, you will be required to pay the single room supplement prior to your departure from the USA.

Schedules, accommodations and prices are accurate at the time of writing. They are subject to change.



GRATUITIES, ENTRANCE FEES & TAXES: Gratuities for baggage handling, service charges and taxes imposed by hotels, and entrance fees to all points of interest as outlined in the itinerary are included in the final cost. U.S. and foreign airport taxes are included in air costs. Tips to drivers and specialist guide(s) are **not** included and are the sole responsibility of the Traveler.

CANCELLATIONS, DEVIATIONS & CHANGES

TRAVEL INSURANCE: We recommend travel insurance. Travel insurance can provide financial reimbursement should the unexpected occur.

CANCELLATION: Please be aware that most travel bookings are non-refundable and cancelled bookings will incur charges. These charges can be up to 100% of the cost of the booking, regardless of whether travel has commenced. Where we incur any liability for a cancellation fee or charge for any booking that you cancel, you agree to indemnify us for the amount of that fee or charge. Cancellations are only effective upon receipt of written notification. The following per-person fees are applicable; however, depending on the specific itinerary or other factors, we may require a non-refundable deposit:

- Up to 6 months prior to departure (December 9, 2025), \$300 per person administrative fee.
- 179 days to 96 days prior to departure (December 10, 2025 to March 3, 2026), \$300 per person administrative fee, plus \$500 non-refundable deposits given to suppliers.
- 95 days to 76 days prior to departure (March 4 to March 23, 2026), deposit is forfeited.
- 75 days to 60 days prior to departure (March 24 to April 8, 2026), 50% refund is possible.
- 59 days or less prior to departure (April 9, 2026), no refund is possible.

These cancellation fees are also in addition to any fees imposed by airlines.

REFUNDS: While Classic Escapes uses its best endeavors to ensure that all anticipated accommodation is available as planned, there is no claim of any nature whatsoever against Classic Escapes for a refund, in whole or in part, if any accommodation or excursion is unavailable and a reasonable alternative is not found, or if the Traveler is unable to use any service provided in the itinerary.

CHANGES: Once your tour is reserved, changes to the itinerary are possible subject to the availability of air or land space at the time of your request. Should there be any change fees imposed by any airlines or ground operators, or additional costs incurred due to the availability of any space, these costs will be invoiced to you and you will be responsible for payment thereof.

SPECIAL ARRANGEMENTS: Should you wish to make additional travel plans, including specially arranged pre- or post-tour extensions different than those offered in conjunction with your tour, a service charge of \$150 per person (over and above the cost of the services required) will be assessed.

DOCUMENTS

PASSPORTS: All individuals departing from the United States of America must be in possession of a valid passport. Please check that your passport is valid for at least 6 months beyond your intended return date. It is your responsibility to ensure that you have valid travel documentation, including but not limited to passports and visas, which meet the requirements of immigration and other government authorities at every destination. You are responsible for confirming with the United States Department of State or the representative government agency of the country to which you are traveling to confirm the requirements for visas and/or other requirements for admission to your destination. Any fines, penalties, payments, or expenditures incurred as a result of such documents not meeting the requirements of those authorities will be your sole responsibility.

REAL ID: Beginning May 7, 2025, if you plan to use your state-issued ID or license to fly within the U.S., it is your responsibility to make sure it is REAL ID compliant. If you are not sure if your ID complies, please check with your local state Department of Motor Vehicles or visit www.tsa.gov/real-id.

TRAVEL DOCUMENTS: It is the responsibility of each Traveler to obtain and carry a valid passport, visa(s), and all other documents required by applicable government regulations. When traveling domestically or internationally, the U.S. Transportation Security Administration (TSA) and U.S. Department of Homeland Security (DHS) advise that everyone carry acceptable identification in order to board a flight. Acceptable identification can be found at <http://www.tsa.gov/traveler-information/acceptable-ids>. The name, date of birth and gender that appears on the identification card must exactly match the same such data that is listed on airline ticket(s) and booking records. You acknowledge any failure to strictly comply with these requirements may result in denied boarding or an undue delay at an airport security checkpoint causing Traveler to miss flight(s), and subsequent scheduled travel bookings on cruises and tours.

Travel documents include, without limitation, airline tickets, hotel vouchers, tour vouchers, or any other document (whether in electronic form or otherwise) used to confirm an arrangement with a service provider. Travel documents may be subject to certain



conditions and/or restrictions such as, but not limited to, being non-refundable, non-date-changeable, and subject to cancellation and/or amendment fees. Travel documents cannot be transferred to another person to use. All airline tickets must be issued in the name of the passport/photo identity holder. An incorrect name on a booking may result in an inability to use that booking and the booking being cancelled. Any errors in names, dates, and timings may result in an inability to use that booking and the booking being cancelled. Any errors in names, dates, and timings on your documentation will be your responsibility if we are not advised at the time of booking. Please reconfirm your flights at least 24 hours prior to departure.

PRE-DEPARTURE INFORMATION: Upon receipt of your registration and deposit, we will send you an electronic pre-departure packet containing all the information you need to prepare for your tour, including the complete itinerary, packing checklist, required documents, insurance information, etc.

FINAL DOCUMENTS: Electronic final documents and air e-tickets will be sent to you approximately two weeks prior to departure, provided all monies have been paid in full.

TRANSPORTATION

AIR TRANSPORTATION: Your program does not include international airfare. If you require assistance, contact Classic Escapes.

FREQUENT FLYER MILEAGE: Check on the airline's website to enquire who their partners are. Obtain frequent flyer mileage on any of these carriers. Present your frequent flyer card for all flight check-ins and keep the boarding passes until you receive a statement with the mileage credit.

TRANSFERS: Roundtrip airport transfers are included in the tour for guests arriving on group flights. If travelers make their own air arrangements, they will be subject to extra transfer fees.

FLIGHT CONFIRMATION: We strongly suggest that you reconfirm exact flight times with the carrier prior to departure. Air travelers are required to check in at least 2 hours prior to departure time for domestic flights and 3 hours for international flights and must report to the gate at least 30 minutes prior to departure time. Failure to comply may result in the loss of the seat to another passenger.

HAZARDOUS MATERIALS: Federal law prohibits passengers from bringing hazardous materials on the aircraft. Federal law forbids the carriage of hazardous materials aboard aircraft in the passenger's luggage or on the passenger's person. A violation can result in five years' imprisonment and penalties of \$250,000 or more (49 U.S.C. 5124). Hazardous materials include explosives, compressed gases, flammable liquids and solids, oxidizers, poisons, corrosives, and radioactive materials. Examples: Paints, lighter fluid, fireworks, tear gases, oxygen bottles, and radiopharmaceuticals. There are special exceptions for small quantities (up to 70 ounces total) of medicinal and toilet articles carried in the passenger's luggage and certain smoking materials carried on the passenger's person. For further information, each passenger should contact the relevant airline representative(s) on their itinerary. Restrictions on hazardous materials are listed <http://www.tsa.gov/traveler-information/prohibited-items>.

INSECTICIDE NOTICE: Some countries require insecticide spraying of aircraft prior to a flight or while you are on the aircraft. We recommend that you refer to the Department of Transportation's list of airports in countries that require airlines to treat the passenger cabin with insecticides prior to the flight or while on the aircraft available at <https://www.dot.gov/office-policy/aviation-policy/aircraft-disinsection-requirements>.

BAGGAGE & FEES: Additional fees for baggage may apply. Please contact your airline or refer to its website for detailed information regarding its checked baggage policies. On average, international flights from the USA allow one piece of checked luggage, not exceeding 50 pounds, plus a carry-on piece not exceeding 15 pounds; however, we always recommend that you check your airline's policy just before departure, as luggage limitations are always subject to change. There may also be luggage and weight restrictions for your destination and that information will be forwarded to you with your pre-departure material and also listed on your final documents.

LUGGAGE ALLOWANCES ON INTERNAL FLIGHTS: Your journey includes internal flights aboard light aircraft which are designed with a maximum luggage allowance; this is closely monitored by the flight operators for safety reasons. You are allowed one carry-on and one piece of luggage, total weight: **44 lbs. (20kgs.)** per person including the camera equipment. Further, only soft-sided duffel bags are accepted, as they stow best in vehicles and airplanes with limited space.

PERSONAL WEIGHT ALLOWANCES ON INTERNAL FLIGHTS: Your journey includes internal flights aboard light aircraft which are designed with a maximum body weight and luggage allowance; this is closely monitored by the flight operators for safety reasons. If your personal weight exceeds **85 kilos (187 lbs.)** it may be required to purchase an extra seat and your Classic Escapes Journey Manager will contact you should this be necessary.

Schedules, accommodations and prices are accurate at the time of writing. They are subject to change.



AIRLINE CLAUSE: The airlines concerned are not to be held liable for any act, omission, or event during the time the passengers are not on board their planes or conveyance. The passengers' tickets in use by the airline or by other carriers concerned when issued shall constitute the sole contract between the airlines and the purchaser of these tickets and/or passengers.

DELAYS: We cannot be held liable for any delays or additional costs incurred as a result of airlines not running to schedule. Any additional land or air fees imposed on account of airline delays will be borne by the traveler.

TRIP DETAILS

ACCOMMODATIONS: You will marvel at the wonderful accommodations provided throughout your tour. All rooms have private bathroom facilities and air conditioning and/or fans, unless otherwise specified. All rates are based on double occupancy. Most rooms are twin-bedded, but king-size beds are occasionally available and should be requested in advance. Accommodations listed in this itinerary are correct at time of writing, but on rare occasions may be substituted for a different property of comparable quality.

MEALS: All meals as specified in the itinerary. Please notify us if you have special dietary needs or requests, and we will do our best to accommodate.

WATER: It is always advisable to drink bottled and/or filtered water when traveling overseas. Safe drinking water will be provided to travelers free of charge in the vehicles and during meals.

PHOTOGRAPHY: The Company reserves the right without further notice to make use of any photograph or video taken on the tour by our photographers without payment or permission. We guarantee that no photographs of a compromising nature will be used.

GUIDES: If one of Classic Escapes' guides are unable to take a trip due to circumstances out of our control (i.e., illness, etc.), we reserve the right to substitute with another guide.

TOUR ITINERARY: To the best of our knowledge the itinerary is correct at the time of printing. We cannot be held responsible for any inaccuracies or changes that may occur after printing.

HEALTH AND SPECIAL REQUIREMENTS: You must have the proper immunizations and health screenings and required documentation of such immunizations and screenings before travel. It is your responsibility to ensure you are aware of any health requirements, health advisories, or health travel restrictions applicable to your travel destinations and to ensure that you carry all necessary vaccination documentation. Classic Escapes is not responsible for providing you with this information. Travel carriers and local authorities at travel destinations may require specific testing prior to boarding and/or upon arrival at your destination, including, but not limited to, a temperature check as a result of the COVID-19 pandemic. You may be denied entry onto your carrier and/or entry upon arrival at your destination or be required to self-quarantine at your destination and upon your return to the United States. You must comply with local government regulations. Any additional costs are your responsibility. Check the State Department Web site <http://travel.state.gov>, for relevant information relating to travel to specific destinations, and the Center for Disease Control <http://wwwnc.cdc.gov/travel/> relating to health issues related to travel.

You must be in good physical and mental health. It shall be your duty to inform us in case you have any medical condition that may affect your ability to enjoy and pursue fully the services of Classic Escapes. By registering for a Classic Escapes service/program, you certify that you do not have any mental, physical, or other condition or disability that would create a hazard for yourself or others.

COVID-19 ACKNOWLEDGEMENT

In order to participate in one of our tours, travelers must certify that they have not recently been treated for, nor are aware of any physical or other condition or liability that would create a hazard to themselves or other members of the tour and agree to comply with all health protocols as directed by Classic Escapes and their representatives during their journey. Travelers must be vigilant regarding COVID and frequently wash or sanitize hands throughout their journey. While there are no COVID restrictions any longer, travelers may wish to wear masks in areas that are most prone to exposure. **Travelers voluntarily assume all risks and related expenses in the event that they or any member of their traveling party require testing, quarantine, or become infected with COVID-19.** Classic Escapes will endeavor to provide assistance wherever possible.

TRAVEL INSURANCE: For your protection, we strongly recommend that you purchase trip cancellation and travel accident insurance. However, no representation or description of the insurance made by Classic Escapes to you constitutes a binding assurance or promise about the insurance. Classic Escapes is not an insurance company and has no responsibility for the submission, payment, or adjustment of any insurance claims. Any insurance claims that may fall under the relevant travel insurance policy must be submitted to

Schedules, accommodations and prices are accurate at the time of writing. They are subject to change.



the insurance company identified in the policy. We recommend the following service – please visit the website to enroll: <http://www.travelguard.com/classicescapes/>. Any questions about what travel insurance does or does not cover should be addressed directly to the travel insurance company, Travel Guard at 1-866-385-4839 and reference ARC #71298. If you decline insurance coverage, you will personally assume full responsibility for any financial loss associated with your travel arrangements, and you could lose your travel investment and/or have to pay more money to correct the situation. **THE PURCHASE OF TRAVEL INSURANCE IS HIGHLY RECOMMENDED ON ALL TRIPS.**

EMERGENCY EVACUATION COVERAGE: For the convenience of our travelers, Classic Escapes provides a complimentary Medical Insurance Plan during your trip via Travel Guard Group, Inc. This includes:

- Emergency evacuation insurance up to \$100,000.
- Up to \$25,000 medical expense and up to \$500 dental expense coverage subject to the terms and limitations of the insurance policy.
- 24-hour worldwide travel and medical assistance.

Medical Plan (926801)

Please click here to view complete coverage of details.

https://webservices.travelguard.com/Product/FileRetrieval.aspx?CountryCode=US&StateCode=AL&ProductCode=926801&PlanCode=NW&FileType=PROD_PLAN_GM

TERMS & CONDITIONS

TOUR OPERATOR: Classic Escapes acts as a tour operator/travel agent only. Classic Escapes does not own, operate, manage, or control any independent suppliers of services and is not liable for their acts or omissions. Classic Escapes' obligations to you are to make travel bookings on your behalf and to arrange relevant contracts between you and other travel service providers. We have no responsibility for these services, nor do we have the authority to make any warranty or representation regarding their standard. Requests cannot be guaranteed. All bookings are subject to the terms and conditions and limitations of liability imposed by these travel service providers. You understand that your legal recourse is against the specific provider, not Classic Escapes. Conditions can change rapidly in a country at any time. It is your responsibility to check the USA Government Travel advisories for your intended destination at <https://travel.state.gov/content/travel.html>.

RESPONSIBILITY OF THE COMPANY: We always do our best to make sure your travel arrangements are satisfactory. However, Classic Escapes and its employees, shareholders, subsidiaries, affiliates, officers, directors, successors, agents, and assigns do not own or operate any third-party entity that provides goods and services for your travel, including without limitation lodging facilities, airline, vessel, motorcoach, or other transportation companies, local ground operators, providers, food service providers, etc. All such persons and entities are independent contractors and are in no way affiliated to Classic Escapes. We are not liable for any delays or additional costs incurred by the Traveler as a result of any actions or occurrences by any of the foregoing third party entities.

LIABILITY: Classic Escapes is not liable for any negligent or willful act or failure to act of any travel service provider or of any third party.

Because Classic Escapes does not have the right to control the operations of such travel service provider or any third party, you agree that Classic Escapes is not liable for any personal injury or property damage which may arise out of these services. Classic Escapes hereby disclaims any liability whether based on contract, tort, strict liability or otherwise, including without limitation liability for any direct, punitive, special consequential, incidental or indirect damages, in connection with the goods or services provided by any supplier booking through Classic Escapes, including without limitation liability for any act, error, omission, injury, loss, accident, delay or irregularity which may be incurred through the fault, negligence, willful acts, omissions or otherwise of such travel service provider or any third party, or their respective employees, agents, servants, or representatives, including, without limitation, their failure to deliver or their partial or inadequate delivery of services, their cancellation and refund policies, fuel increases, bankruptcy or cessation of operations and other matters outside of Classic Escapes' control, and you hereby exonerate Classic Escapes from any liability with respect to the same.

FORCE MAJEURE: Classic Escapes will not be in breach of these terms and conditions or otherwise be liable to you, for any failure or delay in performing an obligation under this Agreement that is due to any of the following causes, to the extent beyond its reasonable control: acts of God, accident, riots, war, terrorist act, illness, disease, epidemic, pandemic, quarantine, civil commotion, breakdown of communication facilities, including web host and internet service provider, breakdown or malfunction of equipment, destruction of or serious damage to facilities, natural catastrophes including, but not limited to extreme weather events, floods and volcanic eruptions, governmental acts or omissions, changes in laws or regulations, national strikes, fire, explosion, generalized lack of availability of raw materials or energy, and any other unforeseen circumstance which is beyond the control of Classic Escapes. **THE PURCHASE OF TRAVEL INSURANCE IS HIGHLY RECOMMENDED ON ALL TRIPS.**

Schedules, accommodations and prices are accurate at the time of writing. They are subject to change.



REFUSAL OF SERVICE: Service providers reserve the right to refuse service to travelers at their sole discretion, including, without limitation, if the traveler: (i) lacks proper documentation for the country of destination; (ii) has a contagious disease; (iii) is under the influence of alcohol, drugs, or narcotics; and/or (iv) manifests disruptive and/or unruly behavior. Classic Escapes assumes no liability for the acts of the service provider in refusing service.

ELECTRONIC OR HANDWRITTEN SIGNATURE: Both parties agree that you may acknowledge and agree to these Terms: (i) electronically; (ii) by handwritten signature; (iii) by any other electronic means, including, without limitation, via email acceptance of these Terms; or (iv) by your implied consent deemed via your actions, which shall include without limitation the payment of the invoice in part or in full or your use of the services provided by Classic Escapes or any other travel supplier related to your booking. All such means will be deemed to constitute effective acknowledgement and execution of this Agreement and shall be sufficient to bind the parties to the terms and conditions of this Agreement.

RESERVATION OF RIGHTS: We reserve the right, in our sole discretion, to change these Terms and Conditions at any time. Updated versions of the Terms will be provided to you, will be posted on our website, and are effective immediately on posting.

GOVERNING LAW: The construction, validity, and performance of these Terms and any disputes between the parties shall be governed by and construed according to the laws of the State of New York, without giving effect to its conflict of law principles, and any federal laws applicable therein. Both parties submit to the exclusive jurisdiction of the courts of the State of New York with respect to any legal proceedings relating to these Terms.



RESERVATION FORM:

BIRMINGHAM ZOO ~ TANZANIA

26AFZ0607/BIRM

Enclosed is my deposit for \$ _____ (\$2,000 per person for the main trip, plus \$600 for the post extension,) to hold _____ place(s) on the classic safari to Tanzania departing June 7, 2026. Check Your Journey at a Glance for all costs associated to this tour.

Final payment due date is **March 4, 2026 payable ONLY by check or wire transfer.**

Please make check payable to CLASSIC ESCAPES, 191 W Poplar Street, Floral Park, NY 11001 **OR**

Charge deposit to: MasterCard Visa American Express Discover

(Credit Card Authorization form needs to be completed and returned to Classic Escapes via mail or fax to 718-204-4726)

A copy of your passport must accompany this form to confirm reservation. Upon receipt of your signed reservation form, passport copy and deposit we will, subject to availability, reserve your spot on the tour. Passport must be valid for at least 6 months after the return of your trip and have four consecutive blank pages in the visa section.

1) NAME (As appears on passport): Mr. Mrs. Ms. _____ DOB _____

2) NAME (As appears on passport): Mr. Mrs. Ms. _____ DOB _____

2) NAME YOU WISH TO BE CALLED IF DIFFERENT THAN ABOVE 1). _____ 2) _____

STREET ADDRESS: _____

CITY: _____ STATE: _____ ZIP: _____

PHONES: HOME: () _____ OFFICE: () _____ MOBILE: () _____

E-MAIL ADDRESS: _____ FAX: () _____

- I certify that I have not recently been treated for, nor am I aware of any physical or other condition or liability that would create a hazard to myself or the other members of this tour.
- The two of us above are sharing a room and, where possible, would like a room with: ONE TWO Beds (Make one selection only)
- I am sharing with _____ (form sent separately)
- I need assistance in securing a roommate. I understand if one cannot be located for me by final payment date, I agree to pay the additional single supplement amount listed on the Journey at a Glance page.
I prefer to share with: Smoker Non-smoker.
- I desire single accommodations, if available, and will pay the single supplement additional cost.
- \$599 per person for the Serengeti Balloon Safari (as of October 12, 2024) and subject to change)
- \$550 per person for the Tarangire Balloon Safari (as of October 12, 2024) and subject to change)
- I/We wish to participate in the optional extension(s) at an additional per person cost .

CLASSIC ESCAPES CAN ASSIST WITH INTERNATIONAL FLIGHT ARRANGEMENTS FROM ANY US CITY.

- YES, I WILL REQUIRE ASSISTANCE. PLEASE SEND ME INFORMATION TO DEPART FROM _____
I REQUIRE: ECONOMY BUSINESS/FIRST CLASS

We'd love to send you exclusive offers and the latest news from our partners around the world. We'll always treat your personal details with the utmost care and will never sell them to other companies for marketing purposes. **No thanks, I don't want to hear about offers and news.**

All rates quoted are based on tariffs and value of foreign currencies in relation to the U.S. dollar in effect as of October 12, 2024 and are subject to change. Refund is made less any cancellation charges levied in accordance with the policy outlined in the accompanying Conditions of Travel. **WE STRONGLY RECOMMEND THAT YOU OBTAIN TRAVEL INSURANCE. RESERVATIONS ARE ACCEPTED SUBJECT TO TOUR CONDITIONS AND WILL BE CONFIRMED ONLY IF ACCOMPANIED BY COMPLETED FORM SIGNED BY THE TOUR PARTICIPANT(S).**

SIGNATURE: _____ DATE: _____

SIGNATURE: _____ DATE: _____

CLASSIC ESCAPES INC.
191 W Poplar Street,
Floral Park, NY 11001

(We recommend that you keep a copy of your selections as noted above for your future reference)

BIRMINGHAM ZOO ~ TANZANIA
JUNE 7 TO 17, 2026



191 W Poplar Street, Floral Park, NY 11001
T: (718) 280-5000; (800) 627-1244
F: (718) 204-4726
E: info@classicescapes.com

CREDIT CARD PAYMENT AUTHORIZATION

Please Note: If you wish to charge your deposit to Visa, MasterCard, American Express or Discover, this authorization form MUST be completed and returned to us along with your reservation form before we can process your application.

I authorize (**Classic Escapes Inc.**) to charge my VISA/MASTERCARD/DISCOVER/AMEX listed below:

Name appearing on credit card _____

Card number _____ Expiration date _____

Card Verification Number* _____ Card Type _____

Billing address of credit card _____

Amount of transaction _____

Services rendered/Items purchased _____

Phone number _____

Signature _____ Date _____

***How To Locate Your Card Verification Number:**

(Visa, MasterCard, Discover: Locate the credit card number on the back of the card above the signature box. Enter the 3-digit number which follows the credit card number. **American Express:** Enter the 4-digit number found directly above and to the right of the credit card number.)

I understand that all rates quoted on this tour I'm making a payment on are based on tariffs and value of foreign currencies in relation to the U.S. dollar in effect as of October 12, 2024 and are subject to change Cancellations are only effective on receipt of written notification. The following per person fees are applicable on this tour:

- Up to 6 months prior to departure (December 9, 2025), \$300 per person administrative fee.
- 179 days to 96 days prior to departure (December 10, 2025 to March 3, 2026), \$300 per person administrative fee, plus \$500 non-refundable deposits given to suppliers.
- 95 days to 76 days prior to departure (March 4 to March 23, 2026), deposit is forfeited.
- 75 days to 60 days prior to departure (March 24 to April 8, 2026), 50% refund is possible.
- 59 days or less prior to departure (April 9, 2026), no refund is possible.

These cancellation fees are also in addition to any fees imposed by airlines.

PLEASE NOTE: At times, our bank requires photocopy of credit card (both sides) and driver's license or document showing signature of cardholder, in order to process the charge. While it is not required at this time that you include these materials with your deposit, if our bank requests it, we will contact you for these copies.